

color representation attribute

On this page:

- [Specifying the color representation attribute](#)
- [Editing the color representation attribute](#)
- [Removing the color representation attribute value](#)

The color representation attribute specifies the representative color of Data Markings that are displayed as portion markings on the elements of the project.

Important

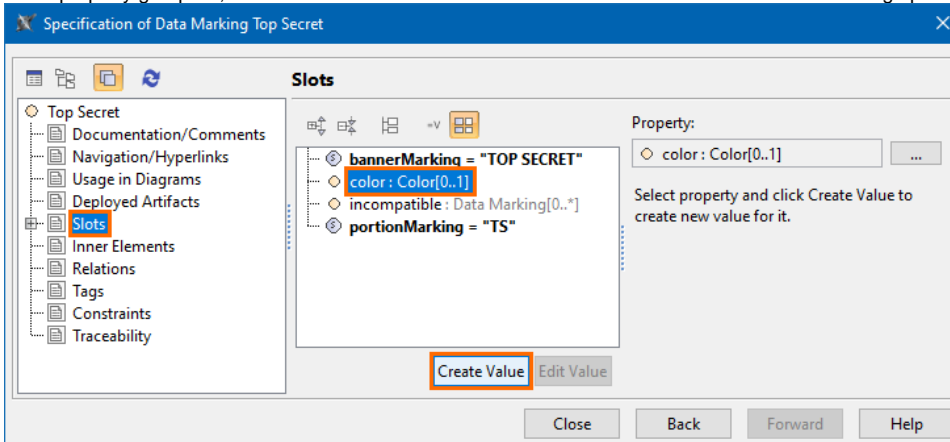
If you make changes to the color representation attribute, make sure to refresh the project (click F5 on the keyboard or click **View** > **Refresh** in the tool) in order to see the changes on the element portion markings.

Specifying the color representation attribute

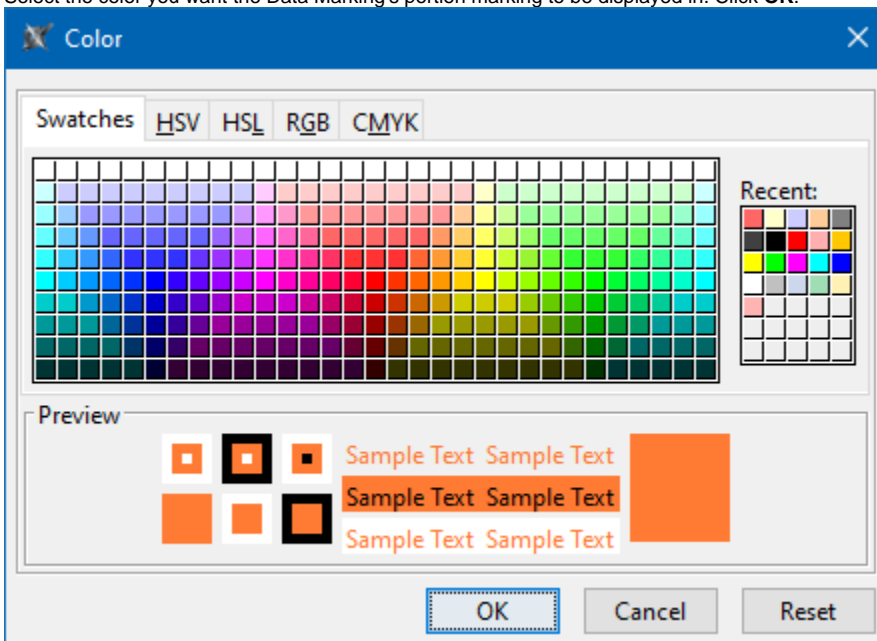
To specify the color representation attribute

- Through the Data Marking element:

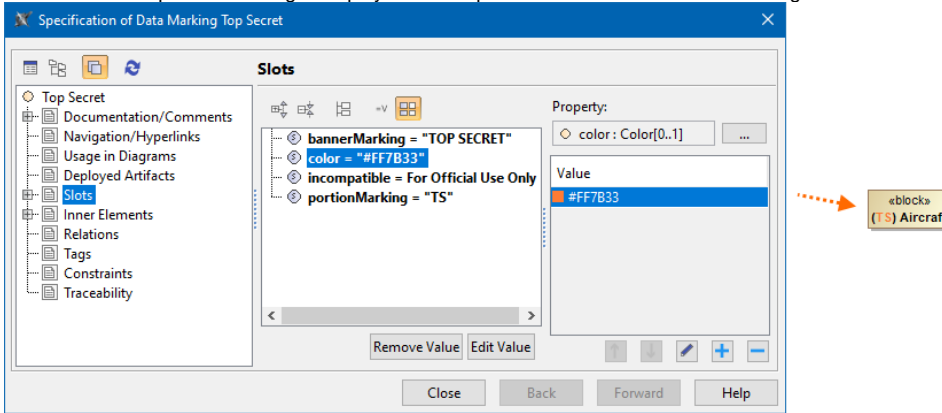
1. Right-click the Data Marking element and open its **Specification window**.
2. In the property group list, select **Slots** > **color** > and click the **Create Value** button. The **Color** dialog opens.



3. Select the color you want the Data Marking's portion marking to be displayed in. Click **OK**.

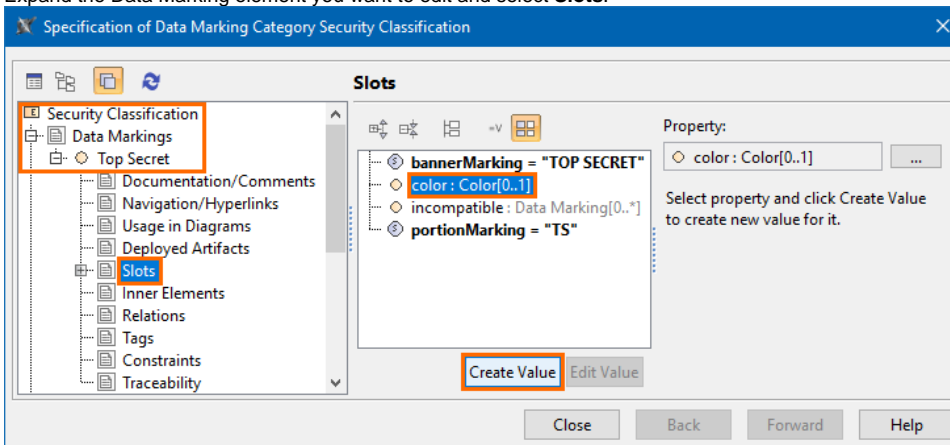


- Click **Close**. The portion marking is displayed in the specified color once the Data Marking is added to an element.



- **Through the Data Marking Category element:**

- Right-click the Data Marking Category element and open its **Specification window**.
- In the property group list, expand **Data Markings**. Data Marking elements that belong to the category appear.
- Expand the Data Marking element you want to edit and select **Slots**.




- Select **color** and click the **Create Value** button. The **Color** dialog opens.
- Select the color you want the Data Marking's portion marking to be displayed in. Click **OK**.
- Click **Close**.


Editing the color representation attribute

To edit the color representation attribute

- **Through the Data Marking element:**

- Right-click the Data Marking element and open its **Specification window**.
- In the property group list, select **Slots > color**.
- Click the  button and select a new color. Click **OK**.
- Click **Close**.

- **Through the Data Marking Category element:**

- Right-click the Data Marking Category element and open its **Specification window**.
- In the property group list, select **Data Markings**. Data Marking elements that belong to the category appear.
- Expand the Data Marking element you want to edit and select **Slots**.
- Click **color** slot and select the value you want to edit.
- Click the  button and edit the selected value.
- Click **Close**.

Removing the color representation attribute value

To remove the color representation attribute value

- **Through the Data Marking element :**

1. Right-click the Data Marking element and open its **Specification window**.
2. In the property group list, select **Slots > color**.
3. In the **Value** box on the right side of the dialog, select the color value you want to remove.
4. Click the button to remove the value.
5. Click **Close**.

- **Through the Data Marking Category element:**

1. Right-click the Data Marking Category element and open its **Specification window**.
2. In the property group list, select **Data Markings**. Data Marking elements that belong to the category appear.
3. Expand the Data Marking element you want to edit and select **Slots**.
4. Click **color** slot and select the value you want to remove.
5. Click the button to remove the selected value.
6. Click **Close**.