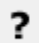


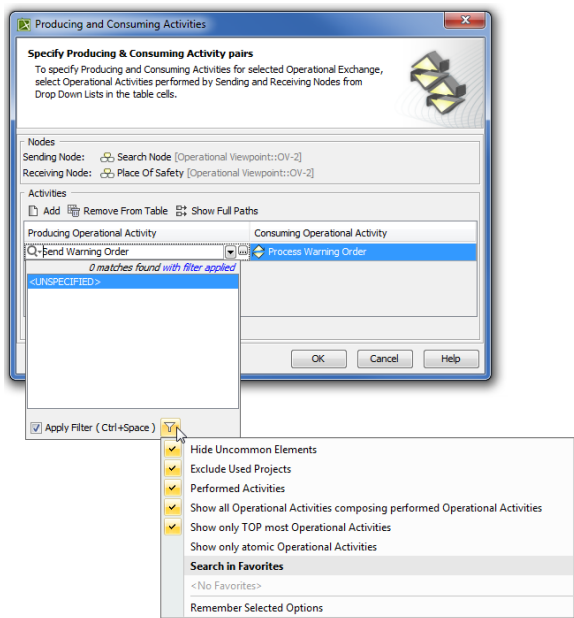
Filtering Operational Activities and Functions

 Unknown Attachment

Use  to filter the activities and functions according to your needs in the:

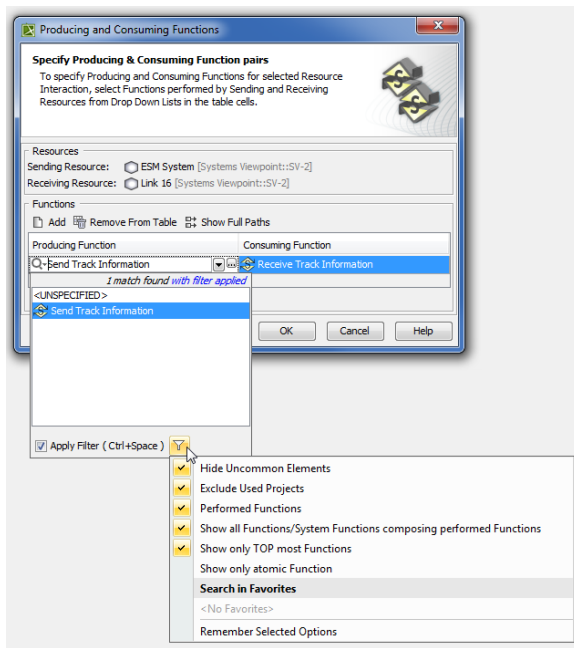
- [Producing and Consuming Activities](#) dialog.
- [Producing and Consuming Functions](#) dialog.

Filtering Operational Activities



Filter Option	Filter allows the selection of...
Performed Activities	The Activities that are performed by the Node.
Show all Operational Activities composing performed Operational Activities	The Activities that are the composite parts of directly performed Activities.
Show only TOP most Operational Activities	TOP most Activities.
Show only atomic Operational Activities	The Activities that are composite parts of other Activities and do not have composite parts.

Filtering Functions



Filter Option	Filter allows the selection of...
Performed Functions	The Functions that are performed by the Resource.
Show all Functions/ System Functions composing performed Functions	The Functions that are the composite parts of directly performed Functions.
Show only TOP most Functions	TOP most Functions.
Show only atomic Function	The Functions that are composite parts of other Functions and do not have composite parts.

To apply filters

- Select appropriate options from the drop-down list.

 For the more concrete element selection, use different combinations of these filters.

Related procedures

- [Producing and Consuming Activities dialog](#)
- [Producing and Consuming Functions dialog](#)