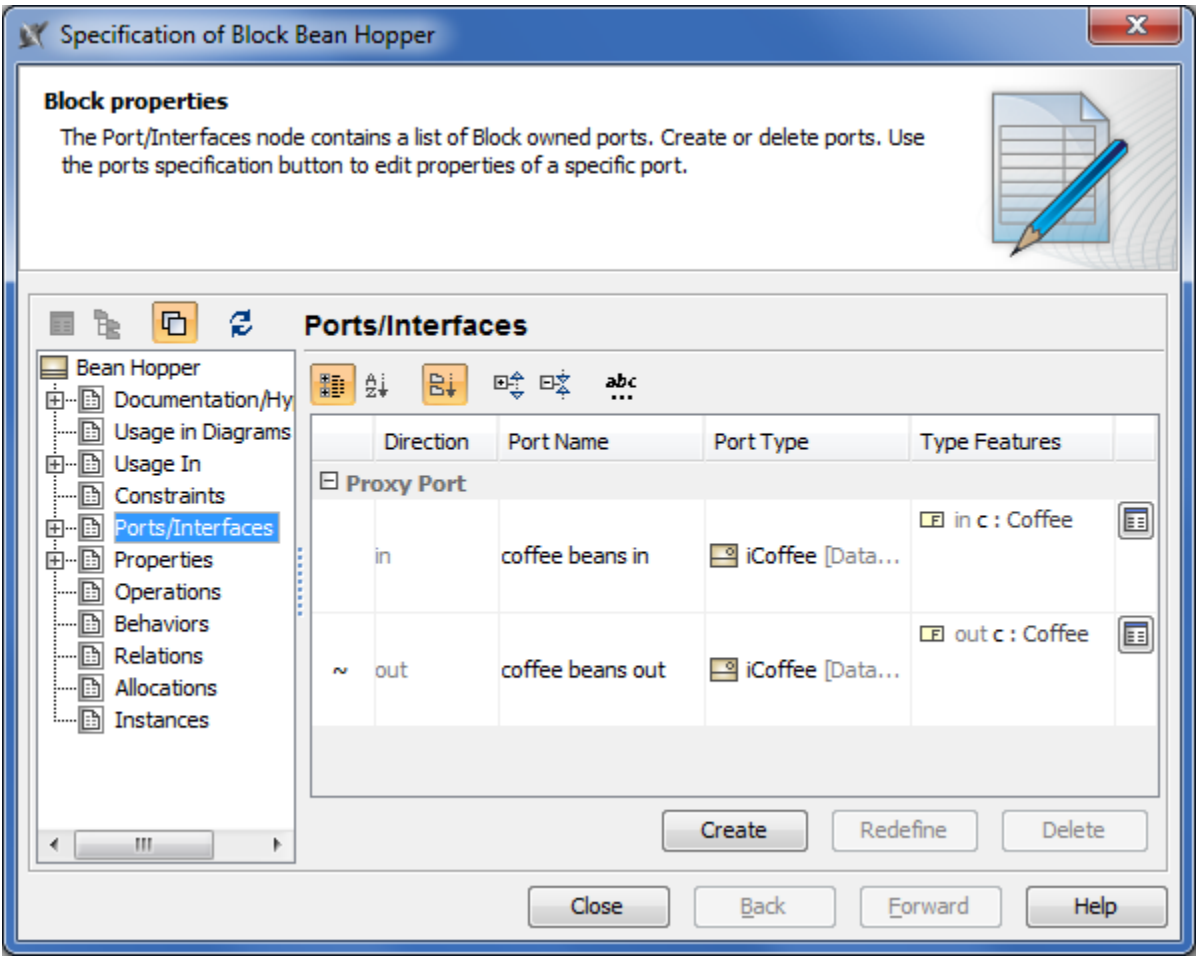


Managing Block Interfaces

All owned and inherited ports and their [interfaces](#) of the selected [Block](#) are collected on the left of the Block [Specification window](#) > **Ports/Interfaces**. Manage them by creating, redefining or deleting.



| Column name | Description |
|---------------|--|
| Direction | Direction prefix of the port. The tilde symbol (~) appears before the direction prefix when the port is conjugated. How to conjugate port >> |
| Port Name | Name of the port. |
| Port Type | Type of the port. |
| Type Features | Features of the port type. |

| Button name | Description |
|-------------|--|
| | Opens the Specification window of the selected port. |
| Create | Opens the list with the available to create properties. Click to create the Connector Property , Part Property , Reference Property , Value Property , Constraint Property , Flow Property . |
| Redefine | Duplicates the selected item and marks its name in ascending order. |
| Delete | Removes the selected item from the list. |