

Linking model elements to OSLC resources

On this page

- [Selecting an existing OSLC resource](#)
- [Creating a new OSLC resource](#)

You can link your model elements to the OSLC resources through the hyperlinks.

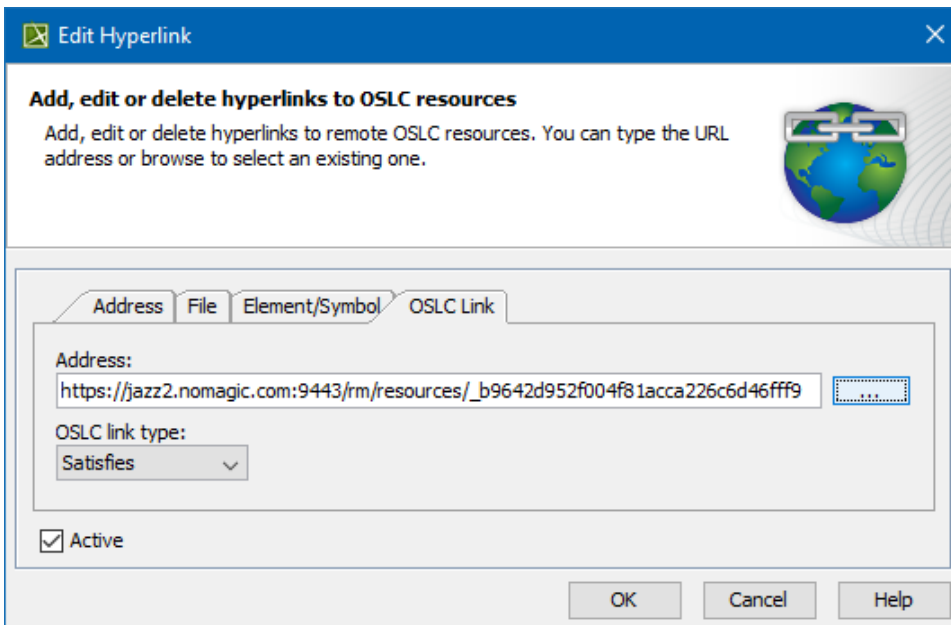
There are two ways you can link a model element to an OSLC resource:

- Selecting an existing resource
- Creating a new resource

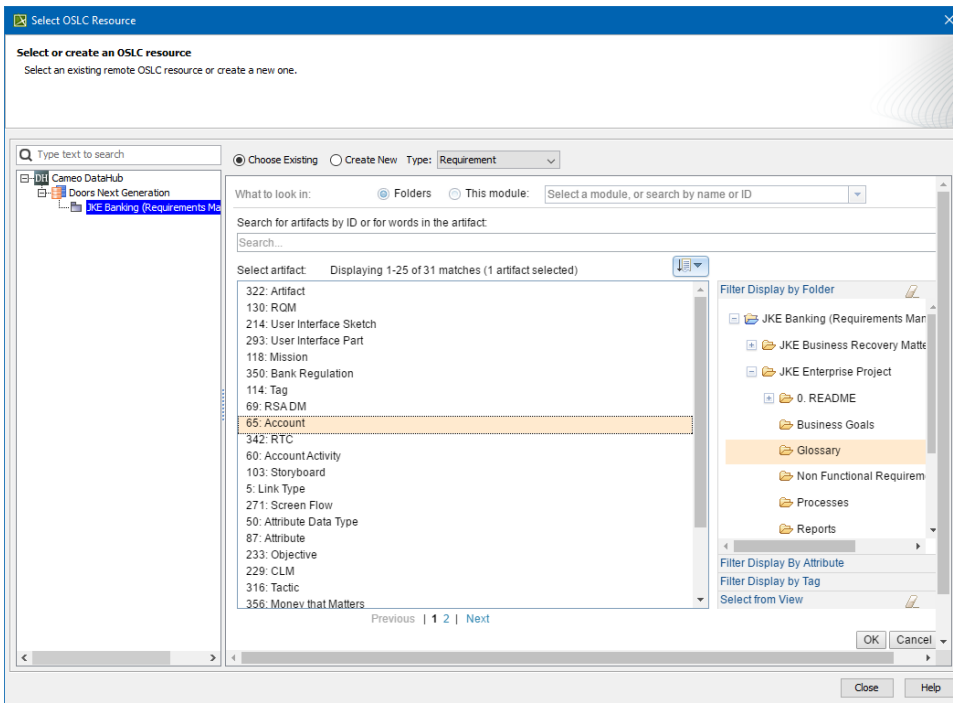
Selecting an existing OSLC resource

To link an element to an OSLC resource

1. Do one of the following
 - In the Model Browser, select an element, open its [Specification window](#) and go to **Documentation / Hyperlinks** property group. Click **Add**.
 - On the diagram pane, select an element, click the **Hyperlinks / Go To** button at the bottom left corner of the element shape. Select **Add Hyperlink**.
2. In the **Edit Hyperlink** dialog, open the **OSLC Link** tab.
3. From the **OSLC link type** drop-down list, select a link type.
4. Click the ... button. The **Select OSLC Resource** dialog opens.



5. In the **Select OSLC Resource** dialog, select the **Choose Existing** option.
6. Select an artifact and click **OK**.

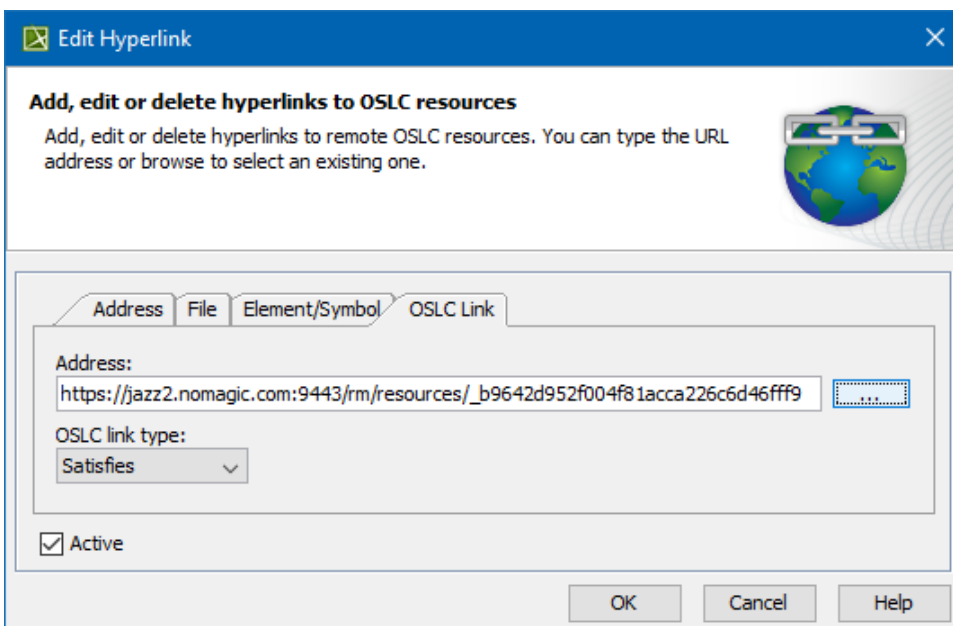


7. Click **Close**.
8. Close the **Edit Hyperlink** dialog.

Creating a new OSLC resource

To create a new OSLC resource

1. Do one of the following
 - In the Model Browser, select an element, open its **Specification window** and go to **Documentation / Hyperlinks** property group. Click **Add**.
 - On the diagram pane, select an element, click the Hyperlinks / Go To button at the bottom left corner of the element shape. Select **Add Hyperlink**.
2. In the **Edit Hyperlink** dialog, open the **OSLC Link** tab.
3. From the **OSLC link type** drop-down list, select a link type.
4. Click the ... button. The **Select OSLC Resource** dialog opens.



5. In the **Select OSLC Resource** dialog, select the **Create New** option.
6. Fill out the data for the new element.

Select OSLC Resource

Select or create an OSLC resource

Select an existing remote OSLC resource or create a new one.

Type text to search

☐ Choose Existing ☒ Create New Type: Requirement

Component Configuration:

Initial content:

Name:
The name can be automatically created based on the content, or you can type one.

Type

Artifact type:

Artifact format:

Populate Artifact Values

Template:
You can populate the artifact with information from an artifact template.

Location

Folder:

Tags:

7. Click **OK**.
8. Close the **Edit Hyperlink** dialog.

The created element is now linked to your selected model element.