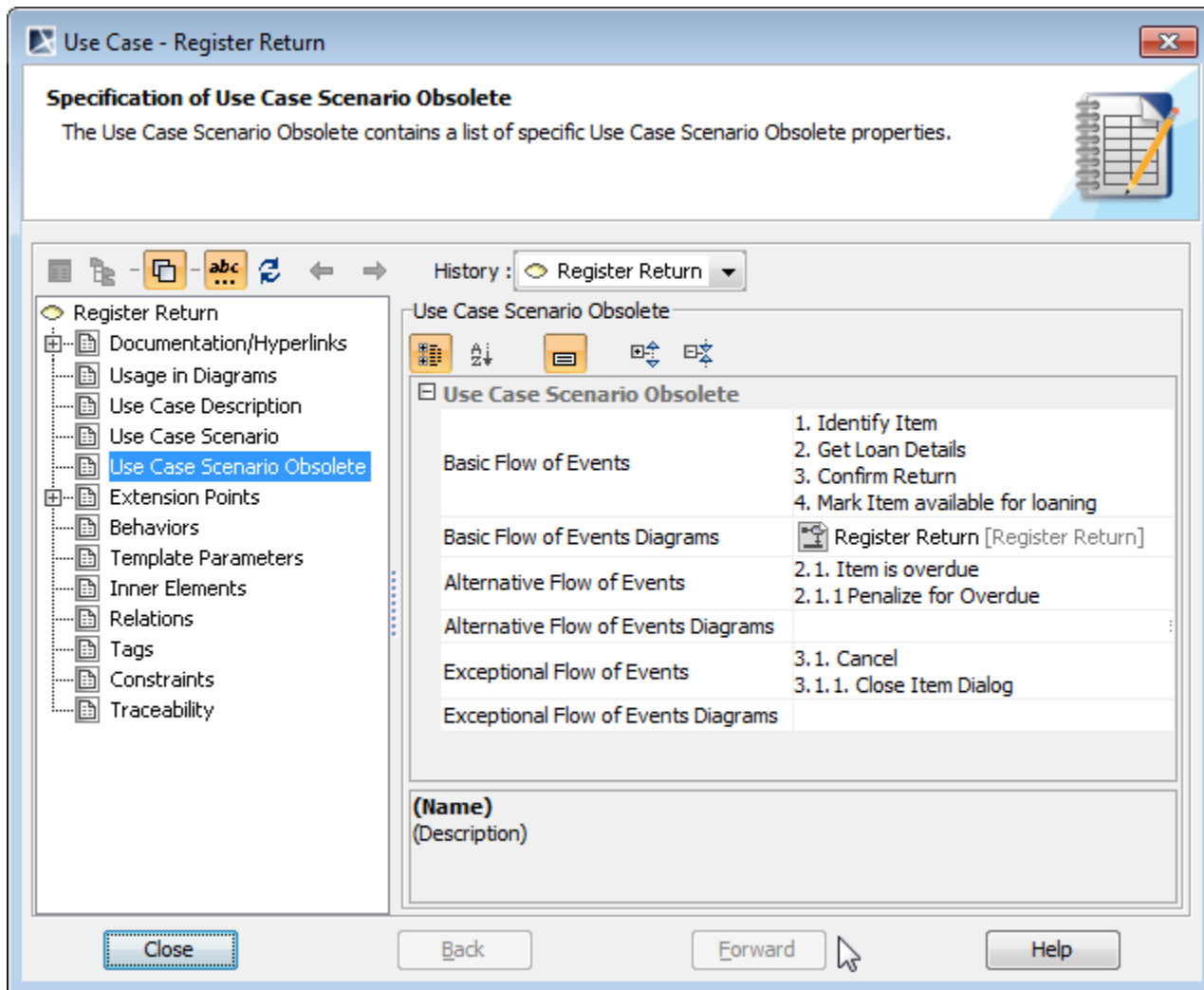


The Use Case scenario created with version 17.0.1 or earlier

Beginning with version 17.0.2 of MagicDraw or other modeling tools developed by No Magic Inc., Use Case scenarios of projects created with earlier versions are stored in the **Use Case Scenario Obsolete** property group in the Use Case [Specification](#) window.



- To see the **Use Case Scenario Obsolete** property group, change the property display mode to **Expert**.

• The **Use Case Scenario Obsolete** property group is displayed only if the [Use Case Description Profile](#) is loaded.

Related pages

- [Model Elements](#)
- [Transition](#)
- [State Machine diagram](#)
- [Activity diagram](#)
- [Sequence diagram](#)
- [Use Case diagram](#)