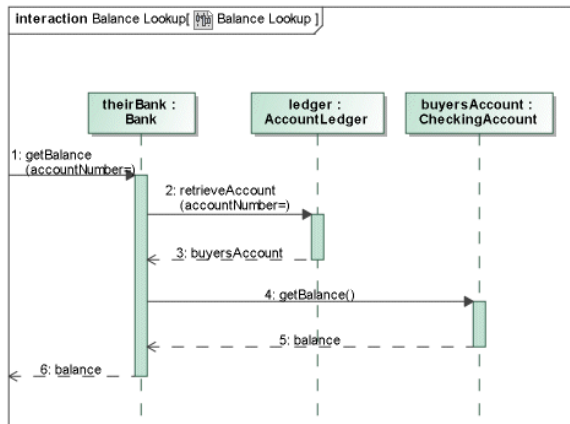


# The formal gate and actual gate usage in the sequence diagram

See the following figure where the *getBalance* message is drawn from the diagram frame to the *theirBank* lifeline. The *getBalance* message has a gate.



## Related Pages

- [Model Elements](#)
- [Class diagrams](#)
- [Use Case](#)
- [Use Case diagram](#)
- [Sequence diagram](#)
- [Activity diagram](#)

See the following figure where the actual gate is presented. The Balance Lookup interaction use refers to the Balance Lookup sequence diagram. The *getBalance* message (see the 2nd message) has selected the formal gate and automatically repeats the data of the *getBalance* message from the Balance Lookup diagram.

