

Working with Links

To create a link

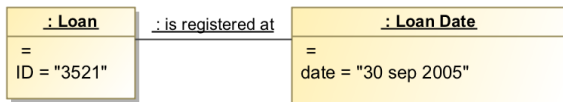
1. Create an [Object diagram](#).
2. In the diagram pane, create two Instance shapes by dragging and dropping the element onto the diagram pane. Select any Classifier you would like.
3. Draw a **Link** between the two Instance shapes.
4. The Select Association dialog opens.



Select Association dialog

The Select Association dialog displays associations that are created between the classifiers of the Link.

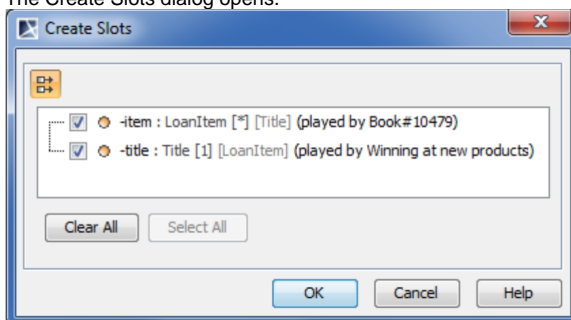
5. Select the appropriate association and click **OK**.
6. The Create Slots dialog opens. Select the appropriate slots and click **OK**.



Example of a link between two Instance shapes.

To create slots on a link

1. In the Object diagram's diagram pane, create two Instance shapes by dragging and dropping the element onto the diagram pane. Select any Classifier you would like.
2. Draw a **Link** between the two Instance shapes. The Select Associations dialog opens.
3. In the Select Association dialog, select the appropriate associations then click **OK**.
4. The Create Slots dialog opens.

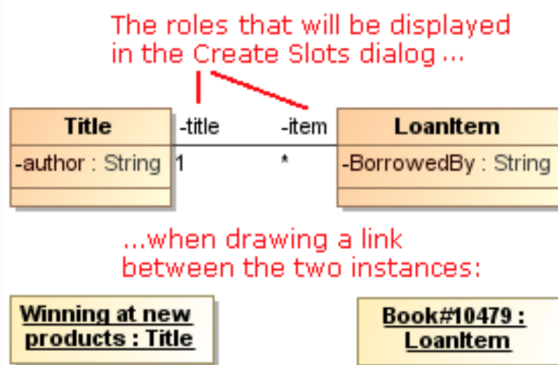


5. Select the slots.



Create Slots dialog

The Create Slots dialog displays the roles of the association that is created between the classifiers of the Link.



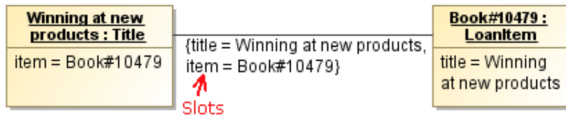
Related Pages

- [Model Elements](#)
- [Classifiers](#)
- [Specification Window](#)
- [Link](#)

Related References

- [Object Diagram](#)
- [Active Validation Rules for Links](#)

6. Click **OK**.



Automatic Creation of Slots on Links

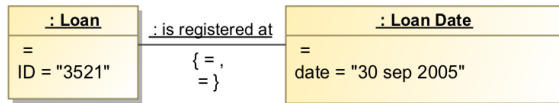
- The slots on the Link are created automatically only if the **Automatically Create Slots of Link** option is set to *true*. For more information, read the instructions on how to turn on automatic creation of slots in Links further on in this page.
- The slots on a Link are created automatically only when the Link references the association. For more information read on how to create a Link at the top of this page.

To turn on automatic creation of slots in links

1. In the window, click **Options > Environment**. The Environment Options dialog opens.
2. In the **General** options group, under the **Editing** subgroup, set the **Automatically Create Slots in Link** option value to *true*.

To display slot values on a link

1. Right-click on a Link. Select **Symbol Properties**. The Symbol Properties dialog opens.
2. Deselect the **Suppress Slots** check box, so it says *false*.
3. The result should look something like the figure below.



Suppress Slots Default Value

- The default value of the **Suppress Slots** option is *true*, that is, slots are not displayed on a Link.
- Slots on a Link are displayed in the following form: {< slot1 name > = < slot values > , < slot2 name > = < slot values > , ... }



Edit Compartment

You can select to display or hide an individual slot in the Compartment Edit dialog.

To open the Compartment Edit dialog

- Select the link on a diagram pane and on its [shortcut menu](#), click **Edit Compartment > Slots**.

To change a link end

1. On a diagram pane, select an end of a Link and move it to the other target.
2. The Link is connected to the other target.