

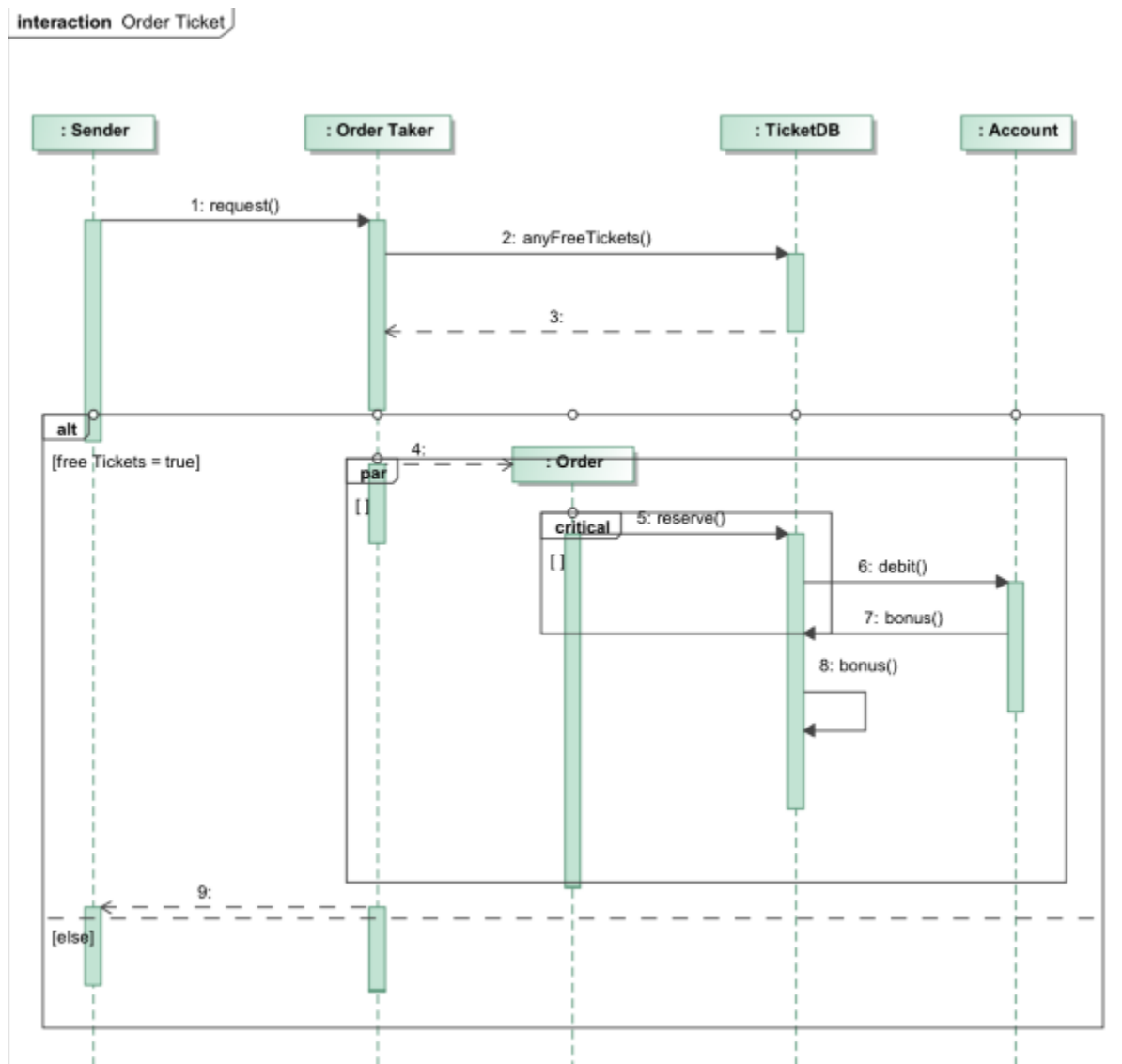
# Combined Fragment

Our modeling tool represents twelve kinds of fragments: Alternatives, Loop, Option, Parallel, Break, Negative, Critical Region, Consider, Ignore, Weak Sequencing, Strict Sequencing, and Assertion.

The UML Combined Fragment element allows the expressions of interaction fragments to be defined in the [Sequence diagram](#). The Combined Fragments provide a means to define particular conditions and subprocesses for any sections of lifelines in the Sequence diagram by specifying an area where the conditions or subprocesses apply. Using the Combined Fragment, a fragment of a Sequence diagram can be separated.

To draw a Combined Fragment

1. In the Sequence diagram toolbar, select the Alternatives element to draw.
2. From the Combined Fragment shortcut menu, select the **Covered Lifelines** command and in the Covered Lifelines dialog, select the lifelines to display.
3. In the Sequence diagram toolbar, in the **Options** group select the **Parallel** Combined Fragment to draw.
4. Draw the **Critical Region** Combined Fragment from the Sequence diagram toolbar, in the **Option** button group.



## Related pages

- [Formatting symbols](#)
- [Specification window](#)
- [Model Elements](#)
- [Sequence diagram](#)
- [Alternative Fragment](#)
- [Fragment](#)

