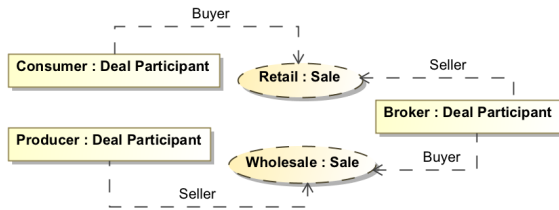


Collaboration Use

A Collaboration Use represents the implementation of a pattern described by a [Collaboration](#) in a specific situation. In this context, [role binding](#) means that the roles in the Collaboration are bound by concrete elements. A Collaboration can be used many times in different Collaboration Uses.



Example of multiple Collaboration Uses along with Parts



Model Tip

These instructions will work best if you have a [Composite Structure diagram](#) created already.

To assign a collaboration to a collaboration use



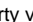
Before assigning a Collaboration to a Collaboration Use, you **must** have a Collaboration created in your model.



Collaboration

Read [Collaboration](#) on how to create a Collaboration in your model.

After creating a Collaboration, then do one of the following:

- On the Composite Structure diagram palette, click the Collaboration Use button  **Collaboration Use**, and then in the opened dialog, select an existing Collaboration or click **Creation Mode** to create a new Collaboration. Click **OK** when you are done.
- On the Composite Structure diagram pane, create a Collaboration Use, then click the Collaboration Use shape, and then on the smart manipulator toolbar, click the  symbol. Select a Collaboration. Press **Enter** or click anywhere on the diagram pane. The Collaboration is now created and assigned.
- On the Composite Structure diagram pane, create a Collaboration Use, then click the Collaboration Use shape, and then press **Ctrl+T**. Type the name of the new Collaboration and press **Enter**, or click anywhere on the diagram pane. The Collaboration is now created and assigned.
- On the Composite Structure diagram pane, create a Collaboration Use, then click the Collaboration Use shape, after that click the name area. Type the ":" colon and then type the Collaboration name. Press **Enter**, or click anywhere on the diagram pane. The Collaboration is now created and assigned.
- In the Containment tree, select the Collaboration and drag and drop it on the diagram pane. A Collaboration Use with the assigned Collaboration is created.
- On the Composite Structure diagram pane, open the Specification window of the Collaboration Use and click the cell of the **Type** property value. In the opened dialog, click , and select the Collaboration. Click **OK** when you are done.

Collaboration use properties

You can format Collaboration Use symbol properties in the **Symbol Properties** dialog.



Formatting Symbols

For more information about symbol representation properties, see [Formatting symbols](#).

Related Diagrams

- [Composite Structure Diagram](#)
- [Activity](#)
- [Sequence](#)
- [State Machine](#)
- [Protocol State Machine](#)
- [Collaboration](#)
- [Model Elements](#)

You can specify Collaboration Use properties in the Collaboration Use's **Specification window**. In the same window, you can find the description of each property. Descriptions are presented in the description area of the Specification window.



Specification Window and Property Values

For more information about the Specification window usage, see [Specification window](#).

For more information about specifying property values, see [Editing property values](#).