

Activity diagram

On this page

- [Description](#)
- [Behavior Creation Mode](#)
- [Smart layout](#)
 - [Dynamic centerlines](#)
 - [Diagram orientation](#)
- [Deleting from Activity diagrams](#)
- [Displaying inner elements](#)

Description

An Activity diagram falls under the behavioral diagramming family. An Activity diagram is a variation of a [State Machine](#). In the State Machine, the [States](#) represent the performance of [Actions](#) or subactivities, while the [Transitions](#) are triggered by the completion of the Actions or subactivities. It represents a State Machine of a procedure itself. The entire Activity diagram is attached through the model to a [Class](#) (such as a [Use Case](#)), to a [Package](#), or to the implementation of an [Operation](#). The purpose of this diagram is to focus on flows driven by the internal processing as opposed to external events. Use the Activity diagrams in situations in which all or most of the events represent the completion of internally-generated actions, i.e. procedural flow of control. Use the ordinary State diagrams in situations in which asynchronous events occur. An Activity diagram is a variant of a State diagram. Organized according to [Actions](#), the Activity diagrams mainly depict the internal behavior of a method, i.e. the implementation of an [Operation](#), or a [Use Case](#).

Although Activity diagrams are often associated with interaction diagrams, they focus more on the work performed by a system, rather than an object interaction. An Activity diagram captures [Actions](#) and displays their results.

A State diagram may also represent this sequencing of steps. However, given the procedural nature of the implementation of the operations in which most events simply correspond to the end of the preceding activity, it is not necessary to distinguish [States](#), activities, and [Events](#) systematically, e.g. a State change and external events are less important inside the method. Therefore, it is beneficial to have a simplified representation for directly displaying activities.

The Activity diagram provides a convenient way to describe complex algorithms, parallel operations, and business processes. Together with the [Communication](#) and [Sequence diagrams](#), they are used to relate [Use Cases](#).



You can create a new activity diagram under the following elements: [Action](#), [Structured Activity Node](#), [Expansion Region](#), [Conditional Node](#), [Loop Node](#), [Sequence Node](#).

The following functionalities help you work in an Activity diagram:

- [Description](#)
- [Behavior Creation Mode](#)
- [Smart layout](#)
 - [Dynamic centerlines](#)
 - [Diagram orientation](#)
- [Deleting from Activity diagrams](#)
- [Displaying inner elements](#)

Behavior Creation Mode

You can use the **Behavior Creation Mode** to automatically create an Activity after creating a [Call Behavior Action](#) in the [Activity Diagram](#). The newly created Activity will be set as the behavior of the Call Behavior Action.

To turn on the **Behavior Creation Mode** in an Activity diagram

- In the [diagram palette](#), click .



The Behavior Creation Mode works separately for each project.

When the **Behavior Creation Mode** is on:

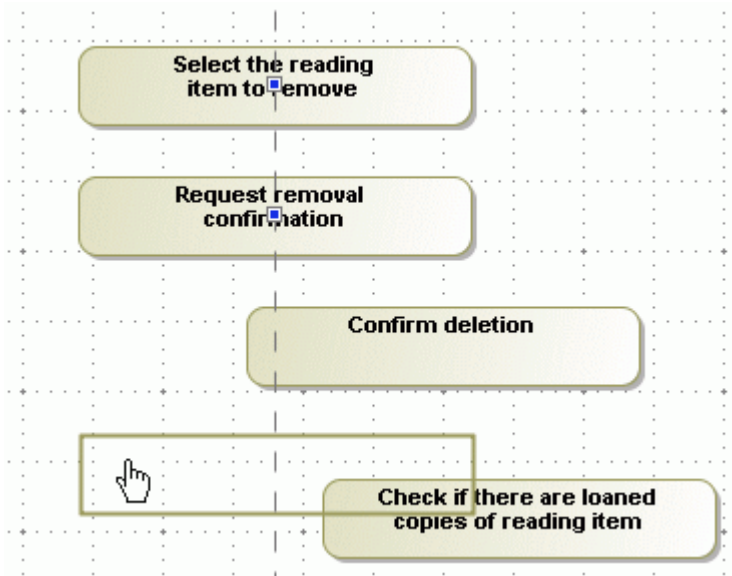
- A [Behavior](#) is created together with the [Call Behavior Action](#). It inherits the type of the Call Behavior Action owner.
- If a [Call Behavior Action](#) and its [Behavior](#) are not titled, type a name on the Call Behavior Action shape on the diagram, and the typed name will be set as the Behavior's name automatically.

Smart layout

Dynamic centerlines

The centerlines are displayed only when the center of the shape that was moved or newly drawn is located near the center of a preexisting shape in the diagram. These lines help you to easily align shapes when drawing a diagram.

When the center of the shape that was moved coincides with a center of any shape that is placed to its right or left, a horizontal centerline appears. When the center of the shape is close to any center of a shape that is located above or below it, a vertical centerline appears.



To switch off the dynamic centerlines

- Click the **Show Centerlines** button  in the diagram toolbar, or press **C**.
- From the **Options** main menu, select **Environment**. In the **Environment Options** dialog, click the **Diagram** category, and clear the **Show Centerlines in Flow Diagrams** check box in the **Display** properties group.

Diagram orientation

The diagram orientation is used to assign the correct rectilinear path breaks and draw paths between the Activity diagram shapes. The paths can be drawn from side to side, or from the lower to the upper shape borders.

Example

To change the diagram orientation

- From the **Options** main menu, select **Project**. In the **Project Options dialog**, expand **Symbol Styles > Default > Diagram** group (if it is not expanded by default) and, in the options list, change the value for the **Diagram Orientation** property.
- From the diagram pane shortcut menu, select **Diagram Properties**, or press Shift+Enter to open the **Diagram Properties** dialog. Change the value for the **Diagram Orientation** property in that dialog.

Deleting from Activity diagrams

- Note that after deleting the last symbol of an element from the Activity diagram, the element will be automatically removed from the model. This does not affect **Pins** and **Activity Parameter Nodes**.
- If a **Call Behavior Action** that has an assigned **Behavior** is deleted from the Activity diagram, then this Behavior is also deleted from the model.



This is valid if the assigned Behavior is editable and does not have more usages, i.e. there is not a Call Behavior Action that has a reference to this Behavior.

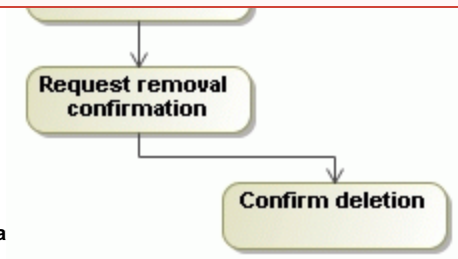
Displaying inner elements

To display inner elements

- When creating a new Activity diagram, right-click an Activity in the Containment tree, point to **Create Diagram**, and then click **Activity Diagram**.

If you have a vertical diagram orientation and shapes are not in the same centerline, the paths will be connected from the lower border of the first shape to the upper border of the next shape, adding break points:

 Inner elements are displayed on the Activity diagram pane automatically upon creating the first diagram under the Activity element.



diagram, select a diagram pane and do one of the following:
 • **play Inner Elements.**

• **Select Display Inner Elements.**

Rela

- Creating diagrams
- Dragging in Activity diagrams

If you have a horizontal diagram orientation, the paths will be connected from the side border of the first shape to the next side border of the second shape, adding break points:

