

Using other projects in a project

When a project is used in another project, shared elements of the used project become visible and accessible in the Containment tree of the project that uses them as if they were a part of the project.

Using local projects


To start using a project

1. Do one of the following:

- From the **File** menu, select **Use Project > Use Local Project**.
- From the **Options** menu select **Project Usages** and click the **Use Project** button.

The **Use Project** wizard opens.

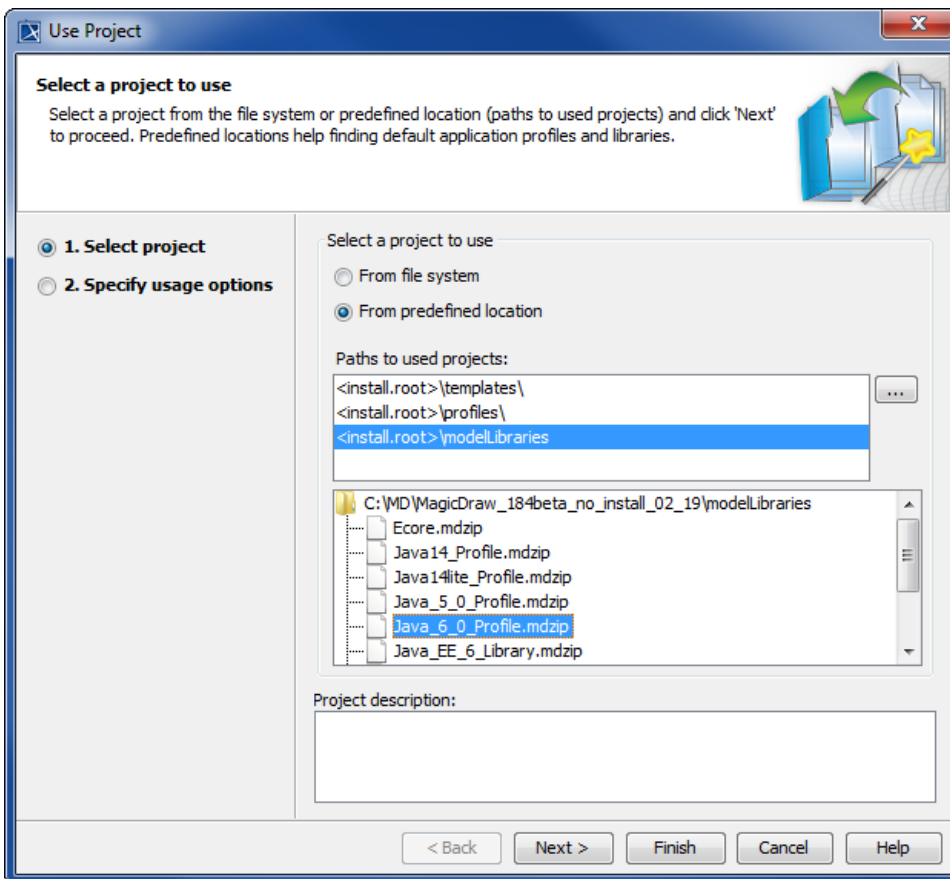
2. In the **Select project** step, select the project you want to use from the file system or from the predefined location:

- If you want to use your custom project from a custom location, select to use a project **From file system** and click  next to the **Project file** box to navigate to the desired file.
- If you want to use the project coming with modeling tool installation, select to use a project **From predefined location**, then select a path from the **Paths to used projects** list and the project to use from the list below.



You can customize the **Paths to used projects** list and add your own paths by [creating path variables](#).

3. Click the **Next** button.



4. In the **Specify usage options** step, [specify the project usage options](#), such as the accessibility mode, load mode, and mounting locations of shared packages.
5. Click the **Finish** button.

After your project starts using another project, the elements of the used project are still stored separately:

- Used project elements — in the used project file.
- Project elements — in the project file.

Modifying project accessibility

The accessibility mode of the used project can be specified in the **Used Projects** dialog. By default, projects are used in the read-only mode.

To change the accessibility mode of a used project

1. From the **Options** menu, select **Project Usages**. The **Used Projects** dialog opens.
2. In the tree on the left side of the open dialog, select the used project and click the **Read-only** or **Read-write** option in the **Accessibility** area.
3. Click **OK**.

If you need to change the contents of the project used in the read-only mode, you can open it separately from the project that uses it. For this, click the **Open Project** button in the same dialog.

Related pages

- [Importing models](#)
- [Managing used projects](#)