


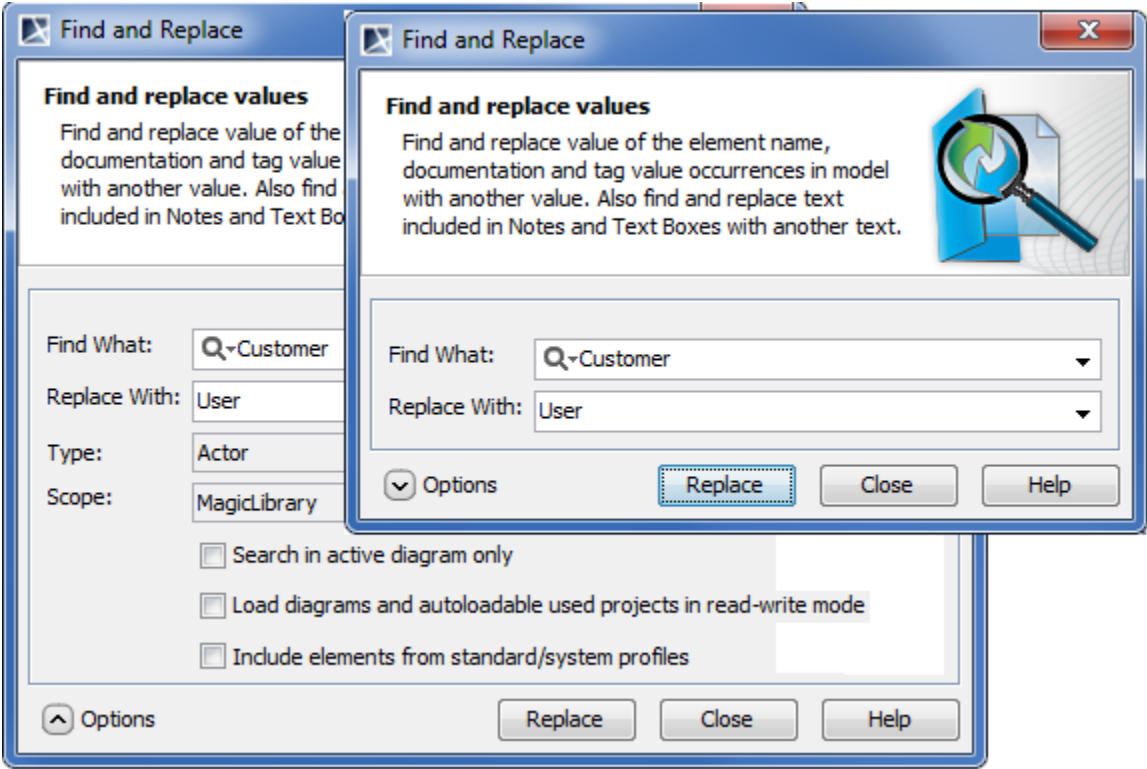
Find and Replace dialog

The Find and Replace functionality allows replacing one specified model value with another. You can change the values for the following properties:

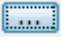
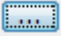
- Names
- Documentation
- Tag values
- Text included to Notes
- Text included to Text Boxes
- Expressions

To open the **Find and Replace** dialog, do one of the following

- On the main menu, click **Edit > Find and Replace**.
- Press Ctrl + R.
- On the main toolbar, click the arrow by the Find button , then select **Find and Replace**.



The following table provides descriptions of the **Find and Replace** dialog components.

Dialog element name	Dialog element type	Description
Find What	Text box with drop- down list	Type or select from the list to search the value of the element to be replaced.
Replace With	Text box with drop- down list	Type or select from the list the value of element that will replace the found value.
Options area		
Type	Text box with 	Click the button and select one or more element types from the proposed items in the opened dialog, or leave the default value <any>.
Scope	Text box with 	Click the button and select a package wherein the content search will be performed.
Search in active diagram only	Check box	Select to search the symbols in the active diagram only. The check box is not available, if all diagrams are closed or if the active diagram is empty.

Load diagrams and auto-loadable used projects in read- write mode	Check box	Select to load all elements to be included in the search if the model has diagrams or used projects that are not loaded. Used project will not be loaded and elements from it will not be included into the search, if the load mode of that used project is Manual load .
Include elements from standard/ system profiles	Check box	Select to include elements from standard/system profiles.



You may see an error when trying to replace a value with an invalid one.

- For example, if the value type is *boolean*, you may replace values from *true* to *false* or from *false* to *true*, but if you will try to replace the value *true* or *false* to other, for example, to *Motor*, an error message will be displayed.
- You will not be allowed to change the *Integer* value to *String* when it is a part of the value. For example, if you have the *120* value, trying to replace *20* with *AB* will cause an error.