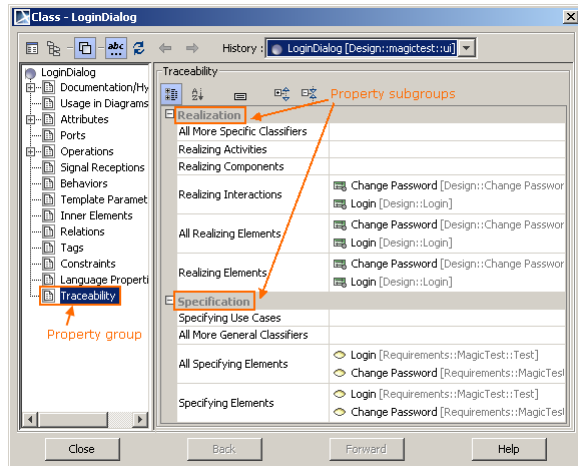


# Creating Property Groups and Subgroups

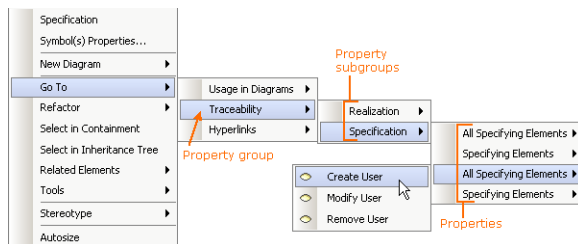
Create your own groups and subgroups to display the properties of both standard UML metaclasses or stereotypes. You can also choose where you want to see these property groups and subgroups. Property groups and subgroups can be visible in the following places:

- Element's [Specification window](#).



Property groups and subgroups in the element's Specification Window

- Element's **Properties** panel (at the bottom of the [Model Browser](#)).
- Element's shortcut menu > **Go To** > submenu.



Property groups and subgroups in the element's shortcut menu

- [Compartment Edit dialog](#).
- [Criterion Editor dialog](#) for editing the relation's criteria in the [Relation Map diagram](#).

To create a property group

1. In the Model Browser, right-click a customization element and choose **Create Element > Property Group**.
2. Type the attribute's name (used to name the property group).
3. Open the attribute's Specification window.
4. Edit the property values in the general specification pane. Each property is described in the description area in the Specification window.
5. Click **Close**.

A stereotype «[propertyGroup](#)» has been automatically applied to the newly created attribute.

To create a property subgroup

## Related Pages

Unknown macro: 'list-c

## Demo

[Property group creation](#)

1. Choose the customization element you want to create a property subgroup for. The customization element must have at least one attribute with the stereotype «propertyGroup» applied.
2. Right-click the attribute with a stereotype «propertyGroup» and choose **Create Element > Property Group**.
3. Type the attribute's name (used to name the property subgroup).
4. Open the attribute's Specification window.
5. In the general specification pane, edit the property values (properties are described in the table below). A subgroup does not inherit the properties of the group. You must specify them for each subgroup separately.
6. Click **Close**.

A stereotype «propertyGroup» has been automatically applied to the newly created attribute.

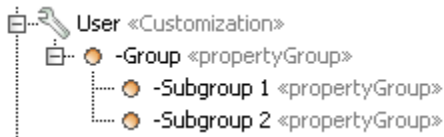


#### Note

The stereotype «propertyGroup» is applied when creating either a property group or a subgroup.

Depending on the attribute hierarchy, the attribute will either be a property group or subgroup:

1. If an attribute with a stereotype «propertyGroup» is owned by a customization element, it is a property group.
2. If an attribute with a stereotype «propertyGroup» is owned by another attribute with the same stereotype, then it is a property subgroup.



#### «propertyGroup» properties

All properties of a stereotype «propertyGroup» are described in [«propertyGroup» Properties](#).