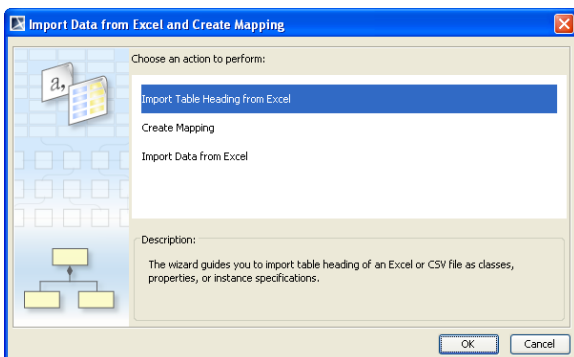
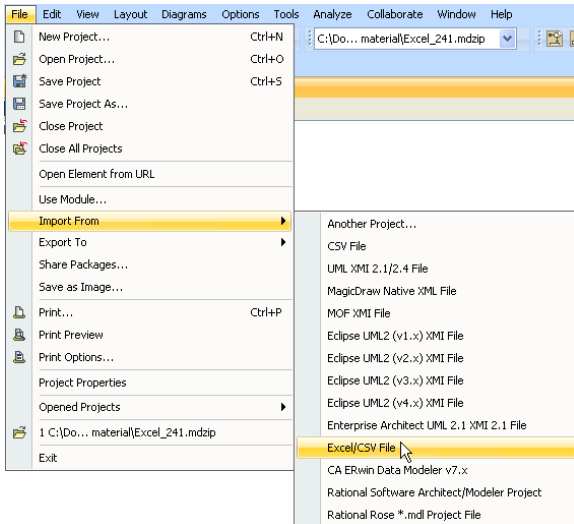


Accessing key features from the main menu

You can use the first three main features of Excel Import (see [Key Features](#)) through the **Import Data from Excel and Create Mapping** dialog. This dialog is accessible from the main menu **File > Import From > Excel/ CSV File** in MagicDraw.

To open the **Import Data from Excel and Create Mapping** dialog

- Click the main menu **File > Import From > Excel/CSV File** in MagicDraw, see the first figure below. The **Import Data from Excel and Create Mapping** dialog will open, see the second figure below.



The **Import Data from Excel and Create Mapping** dialog contains three menus: (i) **Import Table Heading from Excel**, (ii) **Create Mapping**, and (iii) **Import Data from Excel**. They represent three of the four main features of Excel Import.

Each menu in the dialog, see figure above, will open a wizard that provides step-by-step instructions to guide you to import your data and/or create a mapping diagram successfully.

- (i) **Import Table Heading from Excel** helps you select an Excel or a CSV file and import the headings as schema classes to MagicDraw.
- (ii) **Create Mapping** helps you select imported properties of a schema class and map them with some properties of a UML element, a SysML element, or a user model, and create a mapping diagram to represent the class mapping.
- (iii) **Import Data from Excel** helps you either import rows of an Excel or a CSV file as instance specifications of a schema class or import data through a class mapping as model elements whose type is dependent on a target element selected in the class mapping.
- (iv) The fourth feature, **Exporting elements or instance specifications into an Excel or a CSV file**, is accessible from the main menu **File > Export to > Excel/CSV File** in MagicDraw that opens the **Export Data to Excel** wizard. This wizard helps you export elements from a schema class or a class mapping to an Excel or a CSV file.

To open the **Export Data to Excel** wizard

- Click the main menu **File > Export To > Excel/CSV File** in MagicDraw, see the first figure below. The **Export Data to Excel** wizard will open, see the second figure below.

