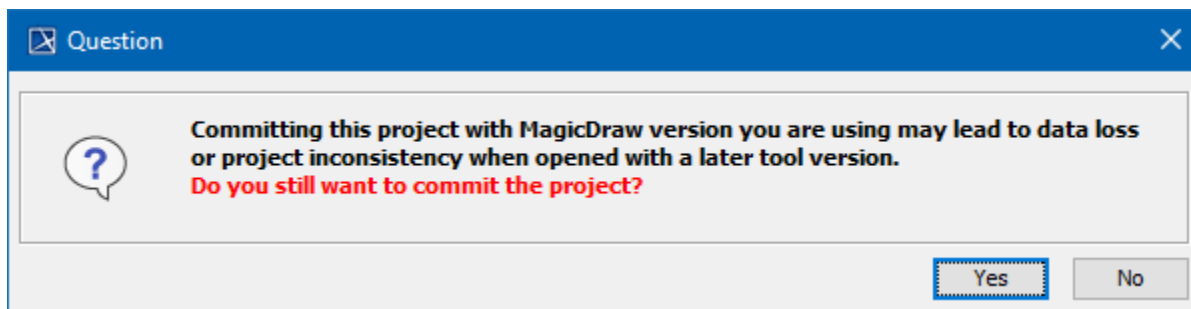


Forward compatibility

The cross-version compatibility checking mechanism is triggered when a project with new feature usages is loaded with an older version of the modeling tool. The mechanism tracks feature usages of 19.0 SP2, 19.0 SP3, and later service pack (SP) versions that result in the appearance of a **Missing features detected** notification in earlier modeling tool versions. The following table shows tracked features, the version they appear in, and whether the project can be committed/saved without any consequences.

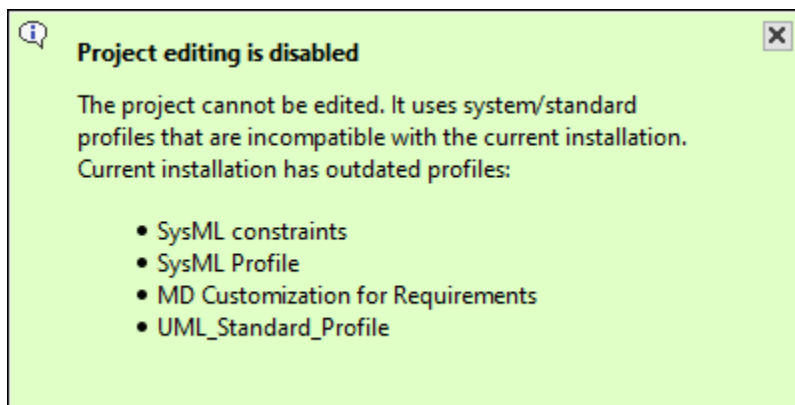
Feature name	Version	Secure to commit/save
Custom row/column hierarchy in the dependency matrix	19.0 SP2	Yes
Validation-Based Metric Definition	19.0 SP2	Yes
Contextual relationships in the dependency matrix	19.0 SP3	Yes
Displaying classifiers on internal structure and behavior diagrams	19.0 SP3	Yes
Custom hierarchy in tables	19.0 SP3	Yes
Lock-free Model Editing	19.0 SP3	No

If you are working with features that can cause inconsistencies after save/commit (see the [table](#) above), the following warning message indicating possible consequences if you proceed will be shown.



Compatibility of profiles

While the tool is backward compatible, we highly recommend for every user working on a particular project to use the same version of the tool. For example, if you use an older version of the tool and open a project created with a later version, a balloon notification pops up:



To avoid this:

- Make sure that every user working on the same project uses the same version of the tool.
- Do not migrate profiles unless every user working on the same project is informed and ready for migration.