


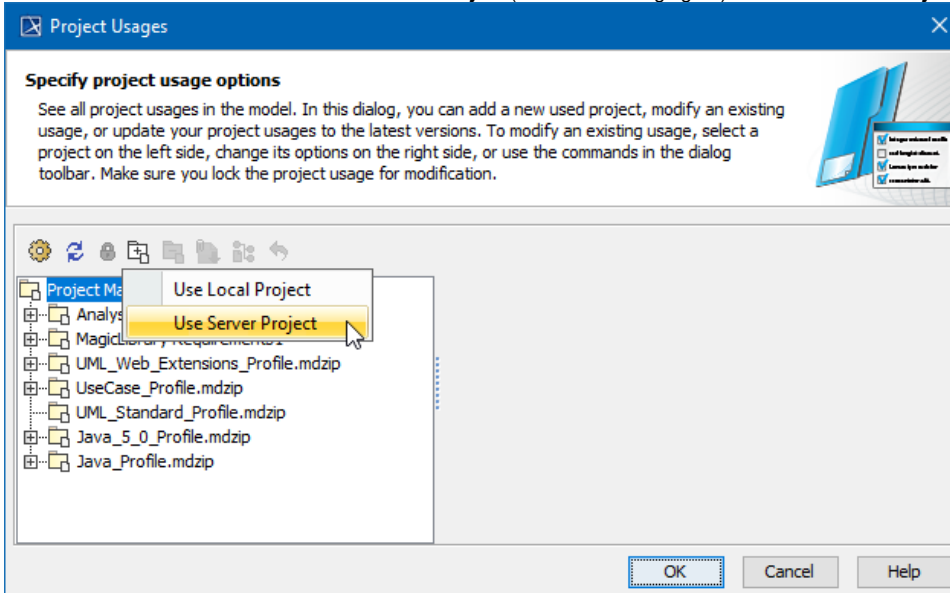
# Start using a project in your project

To begin using a project in your current project, you must have an **Administer Resources** permission.

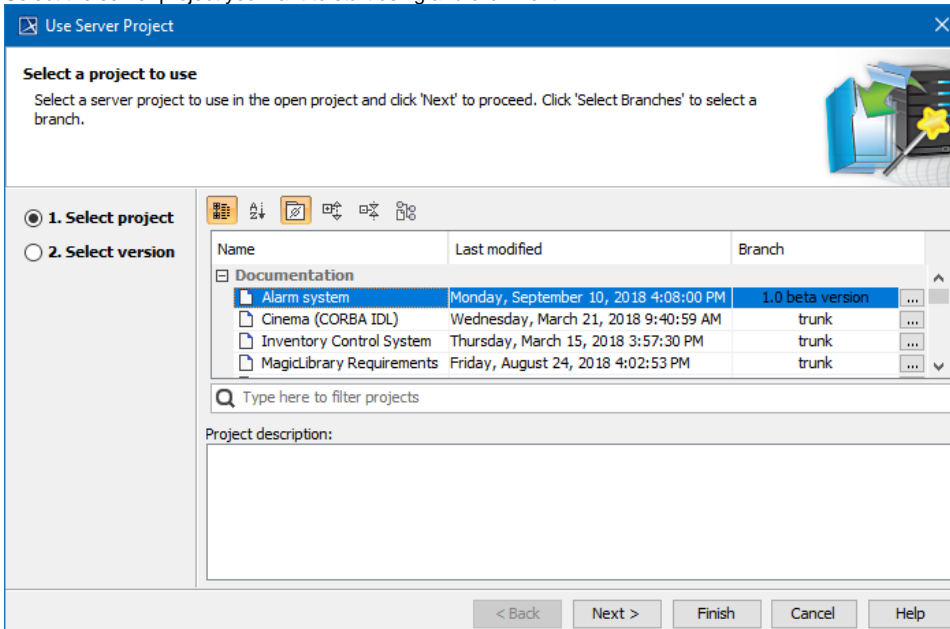
If you want to use an element from either a local or Teamwork Cloud (TWCloud) project, you must use that project in your project first. Projects can be used only in the read-only mode.

To start using a server project in your project

1. Select one of the following:
  - **Options > Project Usages**
  - **Collaborate > Project Usages > Project usages**The **Project Usages** dialog opens.
2. Click the  button and then select **Use Server Project** (see the following figure). The **Use Server Project** wizard opens.



3. Select the server project you want to start using and click **Next**.





### Directly/Indirectly used projects

The selected project is treated as a directly used project. A project used by a used project is treated as an indirectly used project.



### Search bar

Use the search bar to filter projects according to:

- Project Version (together with the commit tags)
  - Author
  - Comment
4. Select a version of the server project to use and click **Finish** (see the following figure). The wizard closes.

**Use Server Project**

Select a project to use

Select a version

Comment

Select a server project to use in the open project and click 'Next' to proceed. Click 'Select Branches' to select a branch.

1. Select project

2. Select version

Alarm system [1.0 beta version]

Project Version	Author	Date	Comment
9	Administrator	Monday, September 10, 2018 4:08:00 PM	Reverted from version 7
8 [Major]	Administrator	Monday, September 10, 2018 3:43:56 PM	Added Class diagram
7	Administrator	Monday, September 10, 2018 3:40:24 PM	Auto-migrated due to profi...
6	Administrator	Monday, September 10, 2018 12:51:07 PM	Basic system is created.
5	Administrator	Wednesday, July 4, 2018 5:48:13 PM	Auto-migrated due to profi...
4	Administrator	Tuesday, June 12, 2018 4:48:14 PM	Auto-migrated due to profi...
3	Administrator	Tuesday, April 3, 2018 4:34:46 PM	Element added
2	Administrator	Friday, March 30, 2018 5:46:44 PM	Created Activity diagram
1	Administrator	Thursday, March 15, 2018 4:07:01 PM	

Type here to filter project versions

Notify on Any New Version

< Back Next > Finish Cancel Help

5. Wait while the usage to the selected project is established.
6. View the selected server project added to the usages of your project In the **Project Usages** dialog.

**Project Usages**

Specify project usage options

See all project usages in the model. In this dialog, you can add a new used project, modify an existing usage, or update your project usages to the latest versions. To modify an existing usage, select a project on the left side, change its options on the right side, or use the commands in the dialog toolbar. Make sure you lock the project usage for modification.

**MagicLibrary Requirements**

Project Type: Server Project

Version: [trunk] #1/1

Notify on: ☒ Any New Version

Origin: twcloud:/4832c447-500c-4f66-a37a-f4c03e94895c/fe8a1739-c3f7-44b2-9944

Open

OK Cancel Help

The used project version shows which version is used and the latest project version (for example, #2/3 means project version 2 is used but version 3 is the latest project version).

Select **Notify on Any New Version** to get instant notifications about changes to used projects to ensure they are always up to date.



### Used project

Please note, the whole content of a used project is added to the main project.

7. Click **OK** to close the dialog.

The selected server project also appears in the Model Browser, under the package *Project Usages*.

Once the usage to the project is established, you can start using its elements. For example, you can select them as types in your project.

Establishing usage to a local project is very similar. In this case, you don't have to select the project version, since local projects don't have them.

#### **Related pages**

- [Editing the content of a used project](#)
- [Changing the used project version](#)
- [Importing the content of a used project into your project](#)
- [Stop using the project in your project](#)