

Always Visible Properties

Generally, stereotype properties become visible in an element's [Specification window](#) only after the stereotype is applied on the element. However, you may customize stereotype properties to be visible in the element Specification window even if the stereotype is not yet applied to the element.

This feature allows specifying domain-specific properties for standard UML elements. It is also used to make [stereotype](#) properties (**Type Modifier**, **Active Hyperlink**, and **To Do**, etc.) visible even if appropriate stereotypes are not yet applied to an element.

Always visible properties in UML property Specification Window.

To make stereotype properties visible when the stereotype is not yet applied to an element

1. Open the customization element Specification window.
2. Click to change the **Show Properties When Not Applied** property to *true*. All properties of the customized stereotype will become visible in the DSL element Specification window even if the stereotype is not yet applied to the element.

Case Study

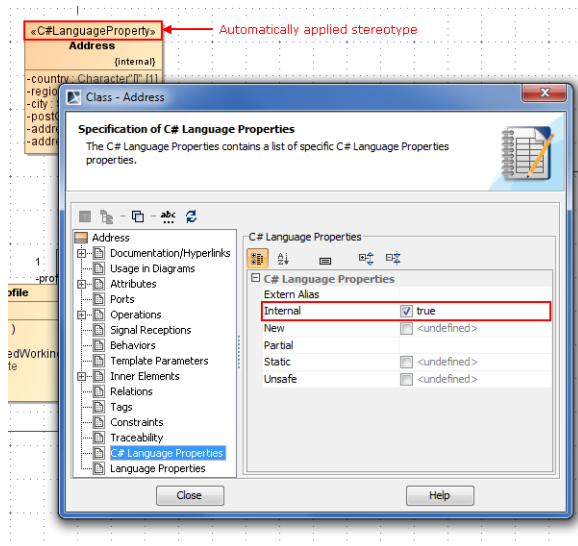
Use the [C# Profile](#) (*C#_Profile.mdzip*) in your project and you will see the **C# Language Properties** appear in a class [Specification window](#). C# properties will appear in the Specification window of a class even though no profile-specific stereotype is applied to the class.

C# properties in class Specification window .

Specify a desired C# property value in the class Specification window and you will see the «C#LanguageProperty» stereotype automatically applied to the class.

Related Pages

- [Creating Customization Data](#)
- [Using Customization Data](#)
- [Customizing Specification Window](#)
- [Advanced cases of properties visibility](#)



Class with automatically applied «C#LanguageProperty» stereotype.