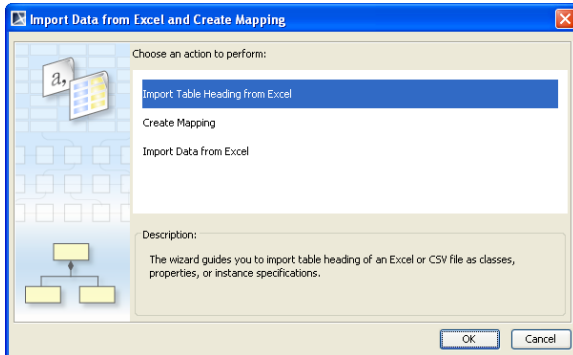


# Importing a schema class by using the wizard

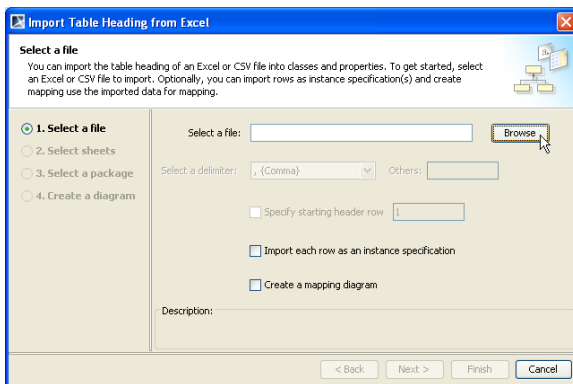
This method helps you import table headings from a text or a spreadsheet file as schema classes.

To import data from an Excel or CSV file to a MagicDraw project as a schema class by using the wizard

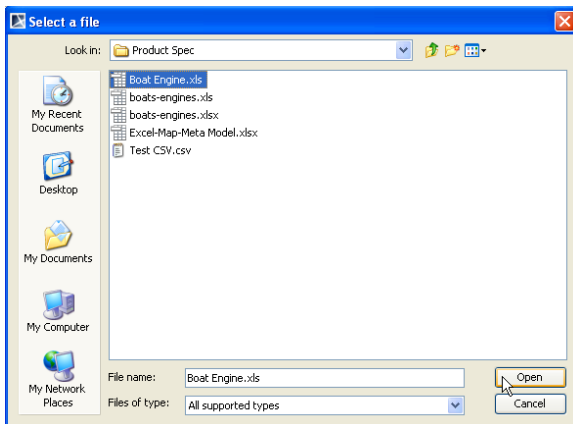
1. Click **File** on the MagicDraw main menu and click **Import From > Excel/CSV File**. The **Import Data from Excel and Create Mapping** dialog will open and the **Import Table Heading from Excel** menu will be selected by default, see figure below.



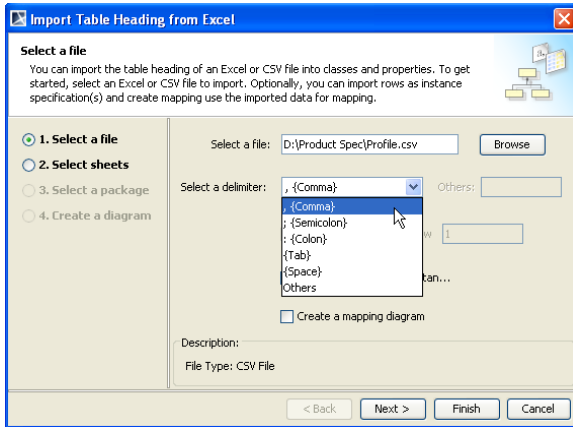
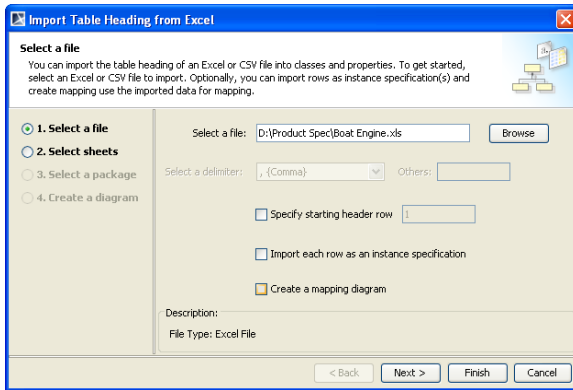
2. Click **OK**. The **Import Table Heading from Excel** wizard will open, see figure below.



3. Click **Browse** to find an Excel or CSV file that you want to import. The **Select a file** dialog will open, see figure below.

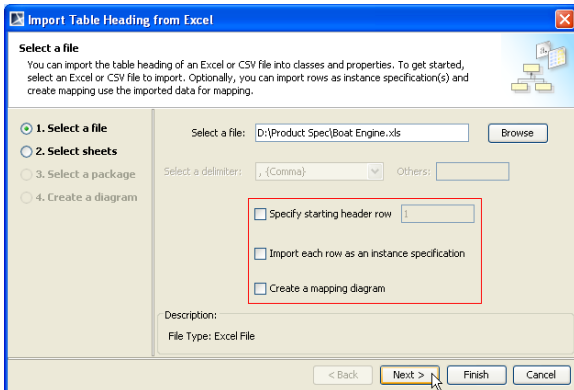


4. Select the file and click **Open**. The path filename of the selected file will appear in the **Select a file** box, see the figure immediately below. If you select a CSV file, the **Select a delimiter:** **Others** drop-down list will be enabled for you to choose a delimiter used in your file, see the second figure below.



5. Once you have selected the file to import as a schema class, see figure below, you can:

- (i) Select the ☒ **Specify starting header row:**  check box if you want Excel Import to start import headings at a specific row.
- (ii) Select the ☐ **Import each row as an instance specification** check box if you want to import data from the file as instance specifications of the schema class. For more information about importing instance specifications, see section [Importing Data to a Schema Class or Importing Data Through a Class Mapping](#) and [Mapping a Schema Class to an Element](#)
- (iii) Select the ☐ **Create a mapping diagram** check box if you want to map the to-be-imported schema class to an element in your project. For more information about diagram mapping, see section [Mapping a Schema Class to an Element](#).



6. You may click either (i)  and skip steps 7 to 14 or (ii)  and the **Select sheets** option page will open, see figure below.



Finish

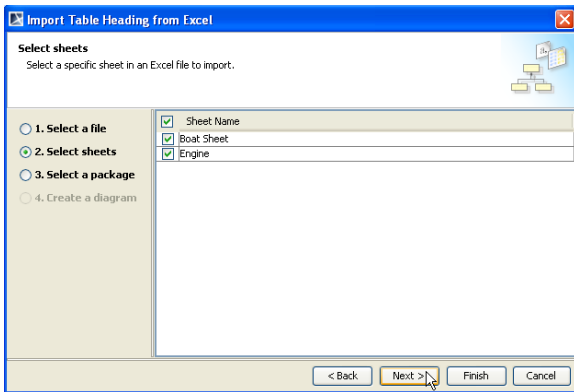
If you click at this point, the wizard will:

- Import table headings in all sheets that contain data as schema classes.
- Save the schema classes under the **Data** module.
- Create a class diagram to represent the schema classes and save it under the **Data** module.

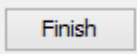
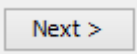


The wizard will skip the **Select sheets** option page if:

- A selected Excel file has only one sheet.
- A selected Excel file has several sheets but only one sheet contains data.
- A CSV file is selected.



7. You can select more than one sheet (if the file has multiple sheets contain data). All of the sheets in the file to be imported are selected by default.

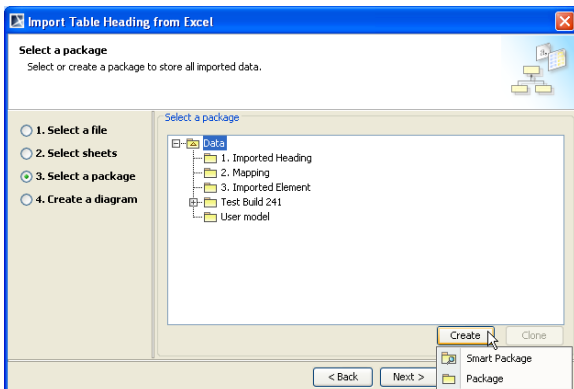
8. You may click either (i)  and skip steps 9 to 14, or (ii)  and the **Select a package** option page will open, see figure below.



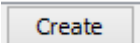
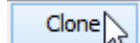
Finish

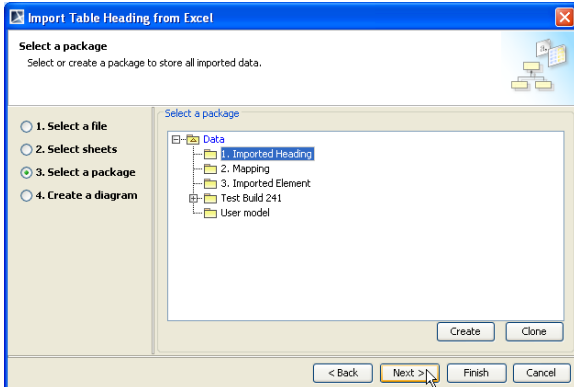
If you click at this point, the wizard will:

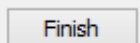
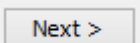
- Import table headings in the selected sheets as schema classes.
- Save the schema classes under the **Data** module.
- Create a class diagram to represent the schema classes and save it under the **Data** module.



9. Select a package as the owner of the to-be-imported schema class and/or its instance specifications, see figure above. You can:

- (i) Select an existing package by selecting it from the treeview,
- (ii) Create a new one by clicking the  button, or
- (iii) Clone an existing one by clicking the  button.

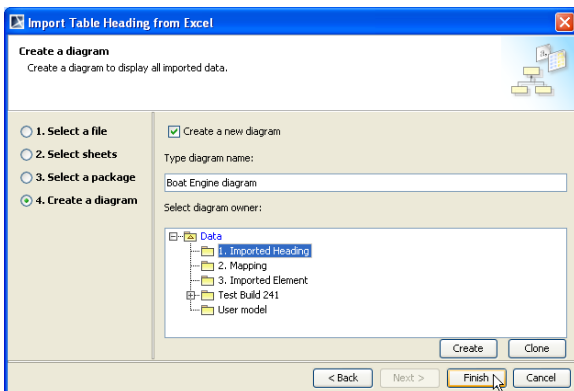


10. Click either  and skip steps 11-12, or  to create a mapping diagram. The **Create a diagram** option page will open, see figure below.

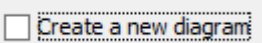


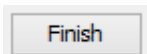
If you click  at this point, the wizard will:

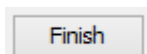
- Save the schema classes under the selected package.
- Create a class diagram to represent the schema class under the **Data** module.



11. In this step, you need to do several things:

- 11.1 Either (i) select the  check box to create a new diagram (the check box is selected by default) or (ii) deselect the check box if you do not want to create a new diagram.
- 11.2 You can name your diagram in the **Type diagram name** box.
- 11.3 (i) Select the diagram's owner from the treeview, (ii) create a new one, or (iii) clone it.



12. Click . The Excel Import plugin will import data from the selected file as a schema class and/or its instance specifications and display them under the selected or created package in the Containment tree in MagicDraw. If you create a new diagram, it will open and display the schema class on the diagram pane, see figure below.

