

19.0 LTR Version News



News of earlier versions

- [Cameo DataHub 18.5 FR](#)
- [Cameo DataHub 18.4 FR](#)
- [Cameo DataHub 18.3 FR](#)
- [Product News Archive](#)

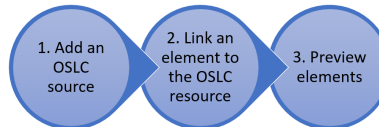
Released on: December 04, 2017

Cameo DataHub 19.0 now adds the ability to consume Open Services for Lifecycle Collaboration (OSLC) data from any OSLC-compliant Providers. It is now possible not just to establish links between model elements and elements provided by an OSLC provider, but also view OSLC previews about remote elements from within MagicDraw environment. Cameo DataHub 19.0 provides property value conversion from source attributes to target attributes. Get it today on nomagic.com or contact your sales representative, and don't forget to give us your feedback on [Twitter](#) or [Facebook](#). Also, please check the latest [documentation](#) and additional [resources](#).

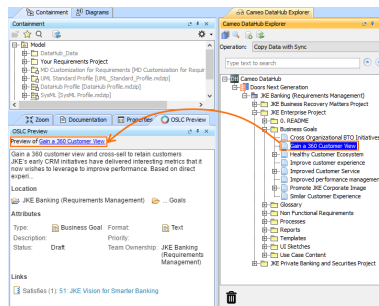
Generic OSLC Provider support

Cameo DataHub 19.0 now adds the ability to consume OSLC data from any OSLC-compliant Provider. It is now possible not just to establish links between model elements and elements provided by an OSLC Provider but also have OSLC previews about remote elements from within MagicDraw environment. [Learn more about OSLC >>](#)

The steps of establishing links between model elements and OSLC resources are as follows.



After you have created the link to an element to the OSLC resource, you can preview the OSLC resource in the **OSLC Preview** tab.



OSLC preview is provided by a specified OSLC Provider.

A new authentication URL interface to add Data Sources for DOORS Next Generation

There are more authentication options for DOORS Next Generation.

- With the simple **Login** form, you can add Data Sources for IBM Rational DOORS Next Generation with specifying an authentication URL to optionally support any available dedicated authentication servers.
- With **OAuth consumer key** authorization, you can perform the authentication to more securely protected servers.

[Learn how to add Data Sources for IBM Rational DOORS Next Generation >>](#)

Add Data Source for IBM Rational DOORS Next Generation
Add a new Data Source by entering the Data Source properties, and then click Create.

Driver: IBM Rational DOORS Next Generation

Authentication type: ☒ Login ☐ OAuth consumer key

Server
Service Provider URL: https://dng-s01.th.nomagic.com:9443/jm/rootse
e.g. https://<server>:<port>/jm/rootse
Authentication URL: https://jazzauth.th.nomagic.com:9443/jazzop/j_sri
e.g. https://<server>:<port>/j_sri_security_check

Login
User ID: tester
Password: *****

Test Connection

Create Cancel

The Authentication URL support with the Login authentication type in the Add Data Source dialog.

Add Data Source for IBM Rational DOORS Next Generation
Add a new Data Source by entering the Data Source properties, and then click Create.

Driver: IBM Rational DOORS Next Generation

Authentication type: ☐ Login ☒ OAuth consumer key

Server
Root Services URI: https://dng-s01.th.nomagic.com:9443/jm/rootse

OAuth
Consumer key: <consumer key>
Consumer secret: <consumer secret>

Create Cancel

The OAuth consumer key authentication type in the Add Data Source dialog.

Property value conversion

Selecting property value conversion rule is now possible when you synchronize mapping Enumeration data or values of source attributes to flexibly convert them to target Enumeration values. [Learn more about property value conversion >>](#)

Converting Rule Editor
Convert values of source attributes to target values according to the conversion rules. You can change the order of the conversion rules by clicking the arrow buttons. The first rule of the conversion rule has the 'DEFAULT' value and cannot be deleted. In case of conversion conflicts, you need to manually correct all the mapping attribute values shown in red.

Direction: ch0_prefs -> ch0_prefs

Order	From	Conversion Rule	To
1	Im	<CONVERT TO> B	B
2	Im	<CONVERT TO> L	L
3	Im	<CONVERT TO> T	T
4	Im	<CONVERT TO> I	I
5	Im	<CONVERT TO> DEFAULT	DEFAULT

Direction: ch0_prefs -> ch0_prefs

Order	From	Conversion Rule	To
1	Im	<CONVERT TO> B	B
2	Im	<CONVERT TO> L	L
3	Im	<CONVERT TO> T	T
4	Im	<CONVERT TO> I	I
5	Im	<CONVERT TO> DEFAULT	DEFAULT

Create Cancel

Converting Rule Editor in the scheme of converting source attribute values to target attribute values.

Cameo DataHub Documentation

- [Cameo DataHub 19.0](#)

Other Resources

- [Modeling Community Blogs](#)
- [Modeling Community Forum](#)
- [Webinars](#)
- [FAQ](#)