

# Creating Process Flow Diagrams From Compositions or Aggregations Defined in Process Diagrams

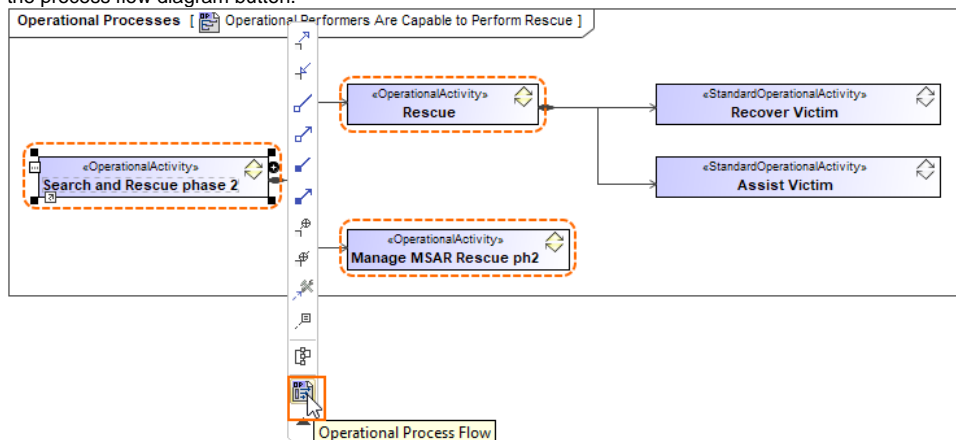
When you have a process diagram with the defined aggregation/composition of activities/functions, you can create a process flow diagram for the selected activity/function:

- From the Smart manipulator toolbar.
- From the shortcut menu in the Containment tree.

To create a process flow diagram

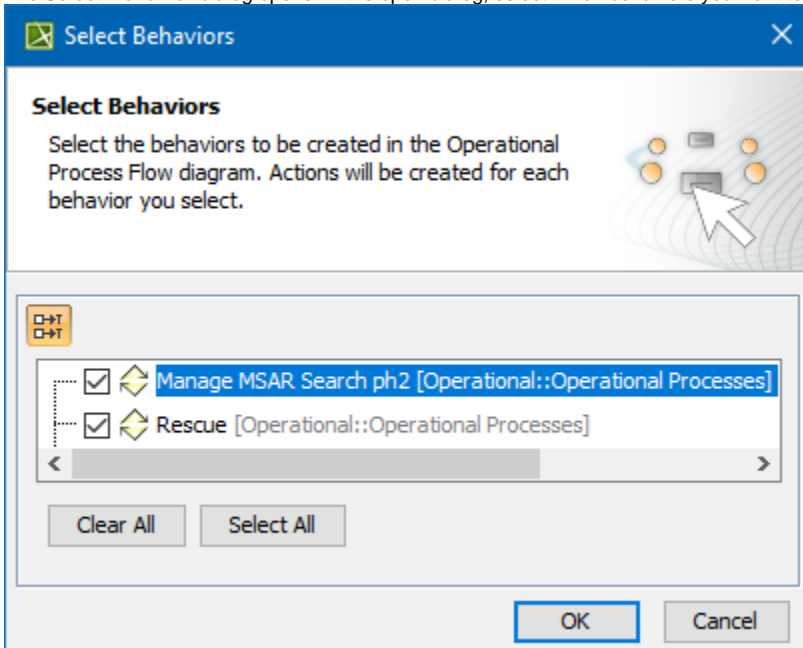
1. Do one of the following:

- In a process diagram pane, click the activity for which you want to create a process flow diagram. In the Smart manipulator toolbar, click the process flow diagram button.



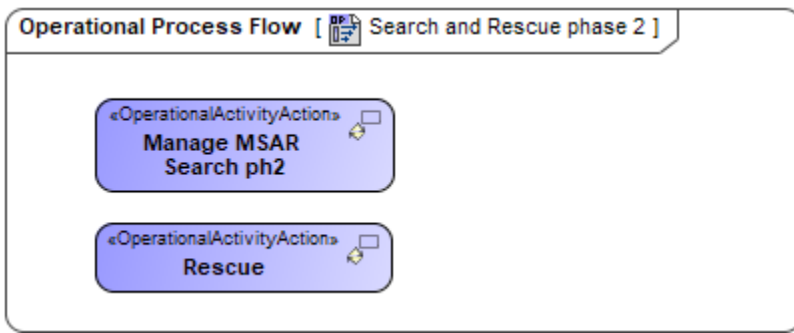
- In the Containment tree, right-click the activity and in the shortcut menu, click **Create Diagram** and the choose **<view> Process Flow**.


2. The **Select Behavior** dialog opens. In the open dialog, select which behaviors you want to be created in the process flow diagram.



3. Click **OK**.

The new process flow diagram is created.



 Note, that only the first level behaviors will be suggested in the **Select Behavior** dialog.

#### Related diagrams

- [OV-5 Operational Activity Model](#)
- [SV-4 Systems Functionality Description](#)
- [SvcV-4 Services Functionality Description](#)
- [MODAF. OV-5 Operational Activity Model](#)
- [MODAF. SV-4 Functionality Description](#)
- [MODAF. SOV-5 Service Functionality Flow](#)
- [NOV-5 Operational Activity Model](#)
- [NSV-4 System Functionality Description](#)
- [NSOV-5 Service Behaviour Definition](#)
- [L4 Logical Activities](#)
- [S4 Service Functions](#)
- [P4 Resource Functions](#)
- [Operational Processes](#)
- [Personnel Processes](#)
- [Projects Processes](#)
- [Security Processes](#)
- [Services Processes](#)
- [Resources Processes](#)