

Working with Operational Connectivity diagram

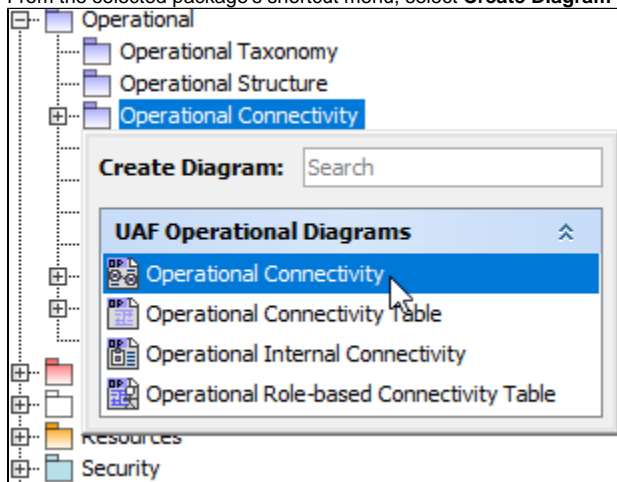
On this page

- [Creating an element](#)
- [Creating Operational Exchanges](#)
- [Realizing Operational Exchanges on Associations](#)
 - [Opening the Exchange Manager](#)
 - [Dragging the Exchange Item on the Association](#)

Creating a diagram

To create an Operational Connectivity diagram

1. In the Containment Tree, select the Operational Connectivity and do one of the following:
 - From the selected package's shortcut menu, select **Create Diagram > Operational Connectivity**.



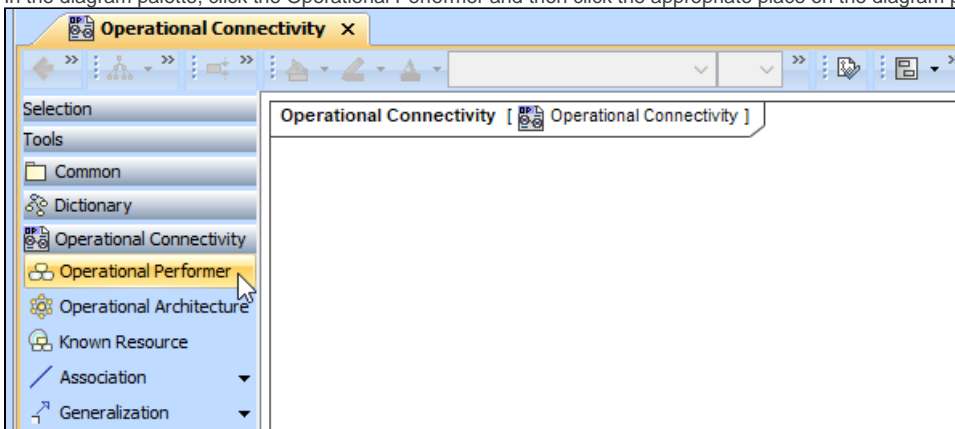
- In the modeling tool's main menu, click **Create Diagram**, search for **Operational Connectivity** and select it.
2. Name a diagram or leave it with the default name.

Creating an element

When the diagram is created, you can start creating the appropriate elements. An example is described using Operational Performer element, but the same is valid for other structural elements.

To create an Operational Performer in a diagram

1. In the diagram palette, click the Operational Performer and then click the appropriate place on the diagram pane.

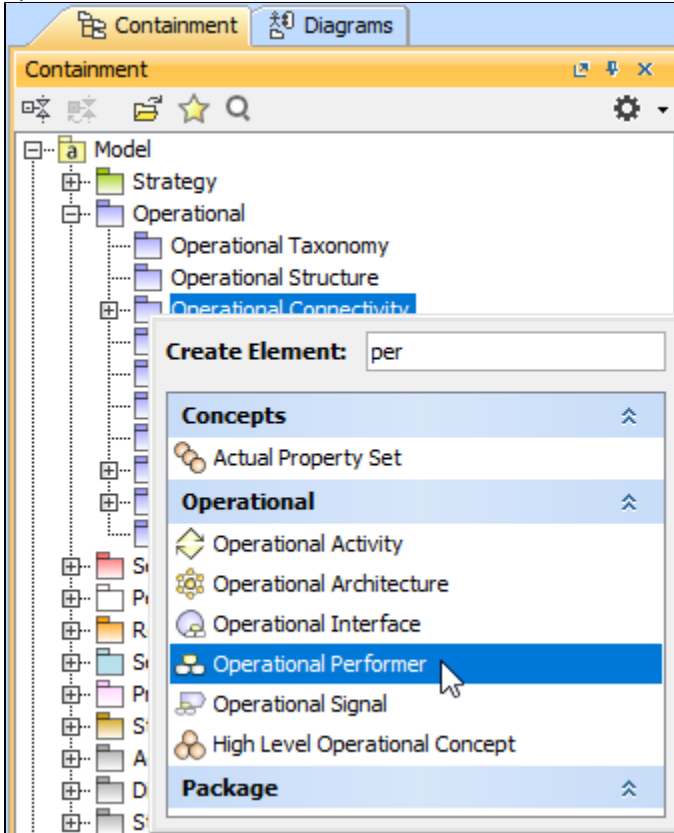


2. Name the element.

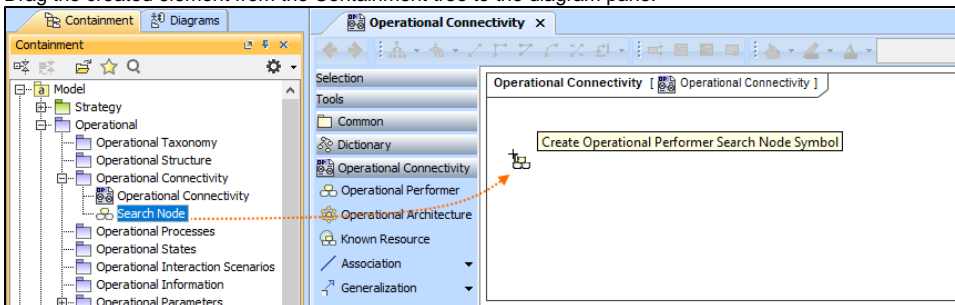
[Back to top](#)

To create an Operational Performer in a Containment tree

1. In the Containment tree, right click the Operational Structure package and from the shortcut menu, select **Create Element**. Search for the Operational Performer and select it.



2. Name the element.
3. Drag the created element from the Containment tree to the diagram pane.



The structure of each Operational Performer can be modeled using the [Operational Internal Connectivity diagram](#).

To create the elements from other resources (e.g. Word, Excel, HTML)

1. Copy a list in your resource.
2. In a diagram, press Ctrl+V and from the **Paste Special** dialog, choose **Element**.
3. From the **Select Type** dialog, choose Operational Performer (or other appropriate element).

 more information about creating the elements from other resources, see [Creating elements from other resources](#).

An Operational Connectivity view also allows you to show mappings among Capabilities and Operational Performers, Physical Location requirements, and Services provided or requested by Operational Performers.

The structure of each Operational Performer can be modeled using the [Operational Internal Connectivity](#) diagram.

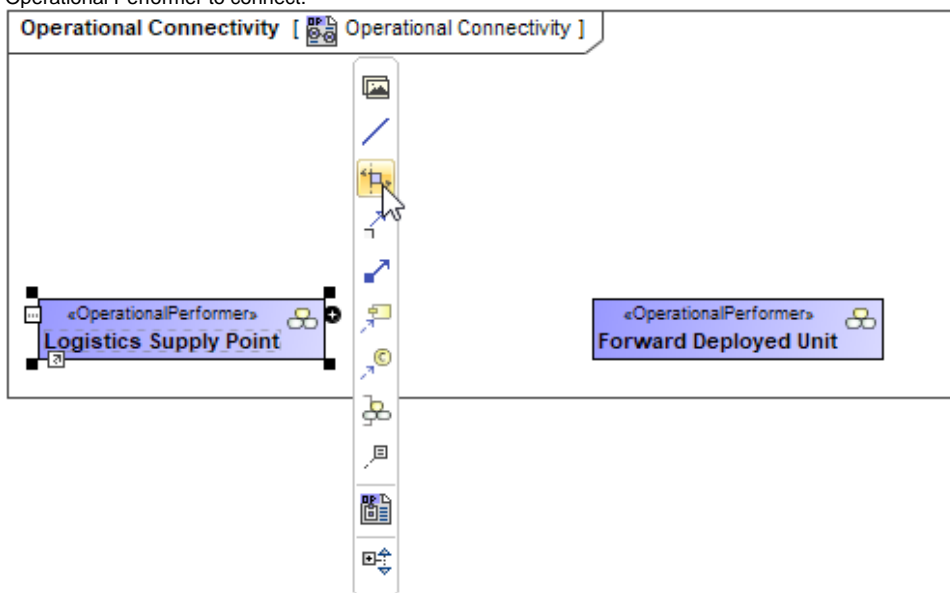
Creating Operational Exchanges

Before creating Operational Exchanges, one or more exchange items should be created (e.g. Information Element, Data Element, or Resource). The you can start creating Operational Exchanges.

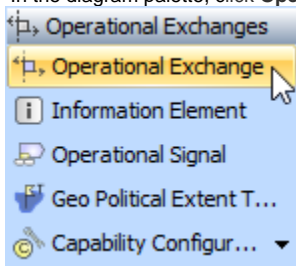
To create an Operational Exchange in the Operational Connectivity diagram

1. Do one of the following:

- On the diagram pane, select an Operational Performer and in the smart manipulator toolbar, click Operational Exchange. Click another Operational Performer to connect.

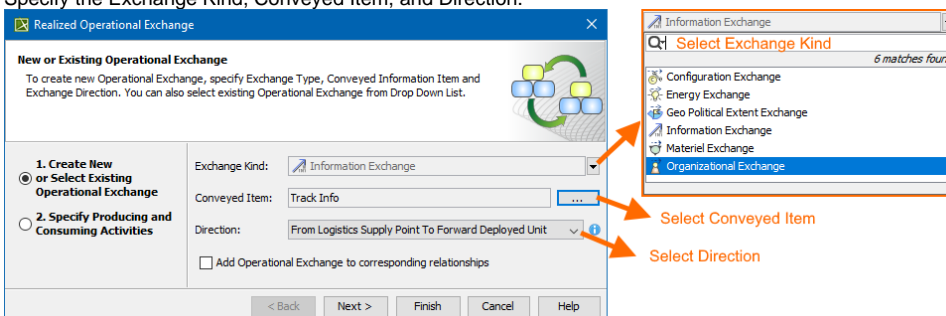


- In the diagram palette, click **Operational Exchange** and on the diagram pane, connect Operational Performers.



The [Realized Operational Exchange](#) wizard opens.

2. Specify the Exchange Kind, Conveyed Item, and Direction.



The Conveyed Item depends on the selected Exchange Kind.

3. Click **Next** to specify Producing and Consuming Activities. (*Optional*)
4. Click **Finish** when you are done.

[Back to top](#)

You can use **Operational Exchange Manager** dialog that enables to analyze and manage the Operational Exchanges data.

Realizing Operational Exchanges on Associations

When you have Operational Performers connected with an Association, there are two ways to create operational exchanges:

- Opening Exchange Manager.
- Dragging the Exchange Items on an Association.

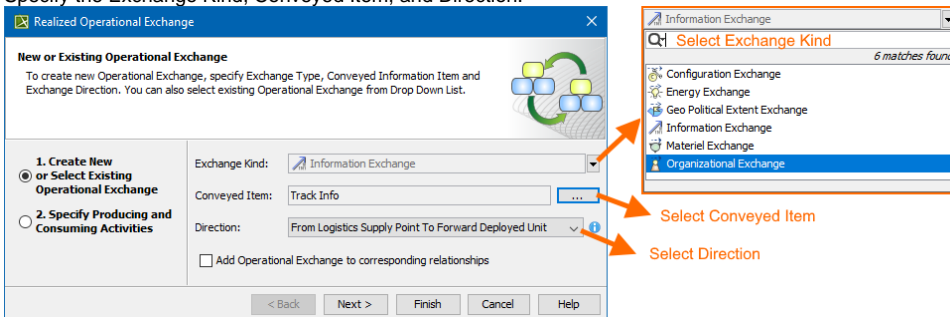
Opening the Exchange Manager

To create new Operational Exchange on the Association

1. Click the Association between Operational Performers.
2. In the smart manipulator toolbar, click New Operational Exchange. The **Realized Operational Exchange** wizard opens.



3. Specify the Exchange Kind, Conveyed Item, and Direction.



The Conveyed Item depends on the selected Exchange Kind.


4. Click **Next** to specify Producing and Consuming Activities. (*Optional*)
5. Click **Finish** when you are done.

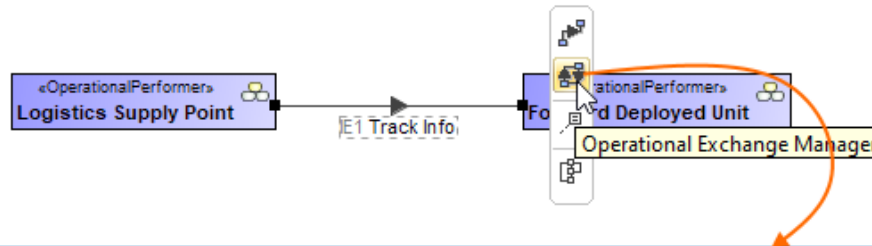



[Back to top](#)

Once an Association Relationship is created between two structural elements, all existing exchanges between the elements are visible in the **Operational Exchange Manager** dialog.

To open an **Operational Exchange Manager** dialog

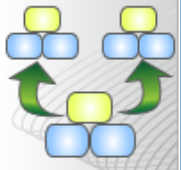
1. Select an Association (also Operational Connector, Operational Control Flow, Operational Object Flow, or Operational Message) in the diagram pane.
2. In the smart manipulator, click  .
The **Operational Exchange Manager** dialog opens.




Operational Exchange Manager
✕

Manage Operational Exchanges

To create new Operational Exchange click 'Add' button. To remove existing Operational Exchange click 'Delete' button. You can also edit existing Operational Exchanges by adding new Operational Exchange Items, realizing or ignoring existing Operational Exchanges on selected relationship, specifying producing and consuming Operational Activities.



◀
📄 Add
🗑 Delete
🔍 Show Inherited
🔍 Show Aggregated
🔄 Redefine
▶
Filter:

#	Realize	Exchar ID	Operational Exchange Item	Sending Operational Performer	Receiving Operational Performer	Producing Operational Activity	Consuming Operational Activity
1	<input checked="" type="checkbox"/> true	OE1	IE1 Track Info	Logistics Supply Point	Forward Deployed Unit		
2	<input type="checkbox"/> false	OE2	Energy Item	Logistics Supply Point	Forward Deployed Unit		

Regular
 Inherited / Aggregated

Realize All
Realize None
Close
Help

Click to select or clear the check box in the Realize column to show (realize) or hide Operational Exchanges on the Association.

Dragging the Exchange Item on the Association

You can create the Operational Exchanges on the Association by dragging the Exchange Elements onto the Association. When you drop the Exchange Element on the Association, the **Realized Operational Exchange** wizard opens.

In the wizard, specify the needed information.

In the Operational Exchange drop-down list, the existing Operational Exchanges will be listed.

[Back to top](#)