

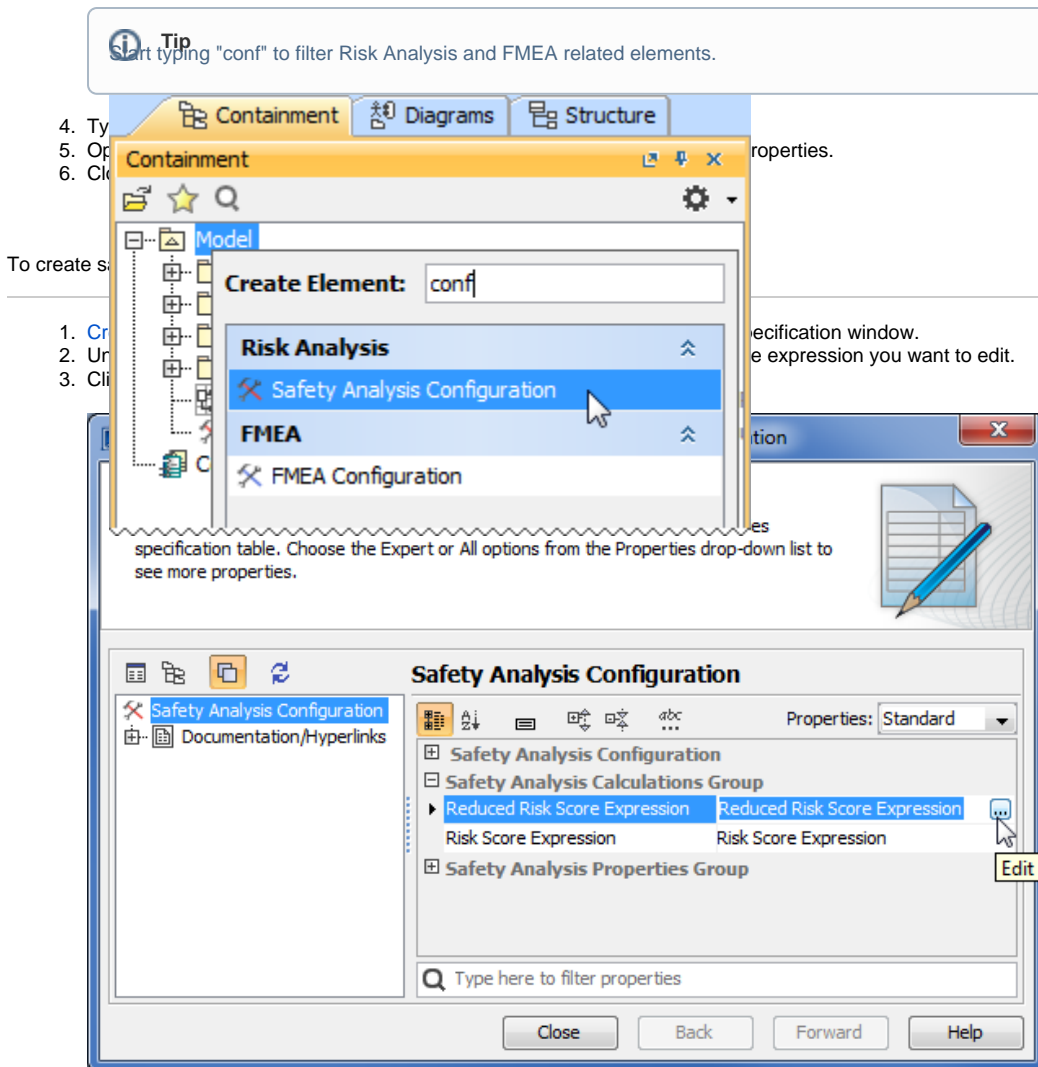
# Customizing Safety Analysis and FMEA configurations

In your safety and reliability analysis model, you can define the values and expressions for all calculable properties, such as **Correctability**, **Probability**, **Severity**, **Risk Score** and other. To do this, use the Safety Analysis Configuration and FMEA Configuration elements.

Every model has predefined Safety Analysis and FMEA Configuration elements coming with the FMEA Profile and Medical Risk Profile. However, you can create one more custom Safety Analysis Configuration element and one more custom FMEA Configuration element. If you decide to define custom Configuration elements, you can modify all the values and expressions used for analysis and calculation (in this case, Configuration elements coming with predefined profiles are not used).

To create custom Configuration element

1. Create your safety and reliability analysis model or open an existing one.
2. In the [Model Browser](#), do one of the following:
  - right-click on the package wherein you want to save a configuration and select the **Create Element** command.
  - select a package wherein you want to save a configuration and press Ctrl+Shift+E.
3. In the open **Create Element** dialog, select the **Safety Analysis Configuration** or **FMEA Configuration** element. The selected element is created in your model.



4. In the open dialog, select an operation and [specify criteria](#) by modifying a predefined expression.

**Note**  
By default, custom Configuration elements already have predefined expressions. So if a certain predefined expression meets your needs, you don't need to modify it.

5. When you are done, click **OK** and close the Specification window.

## Related pages

- [Getting started](#)
- [Reliability analysis using FMEA](#)
- [Safety analysis](#)
- [Additional features](#)
- [Getting started with specifying criteria](#)