


Project Statistics

Detailed project statistics

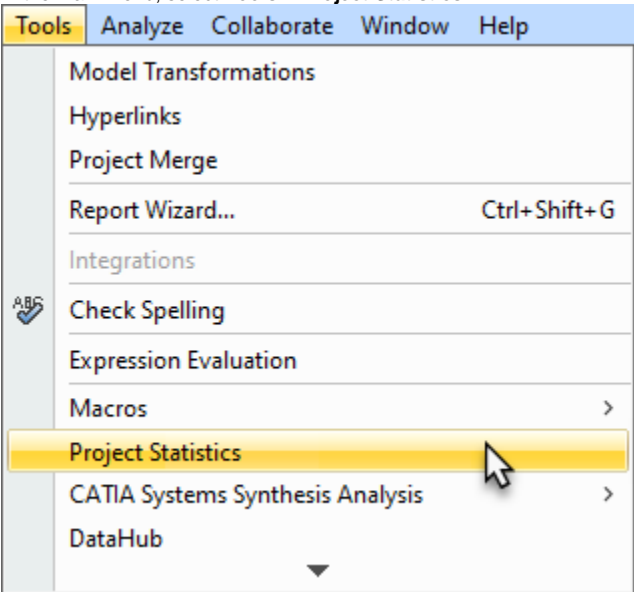
The project statistics feature calculates detailed statistics for the entire project and exports the results to a separate file. The exported statistical report will help us solve performance problems you may be experiencing. Project statistics are calculated in both the main and used projects.

**Confidential Information**

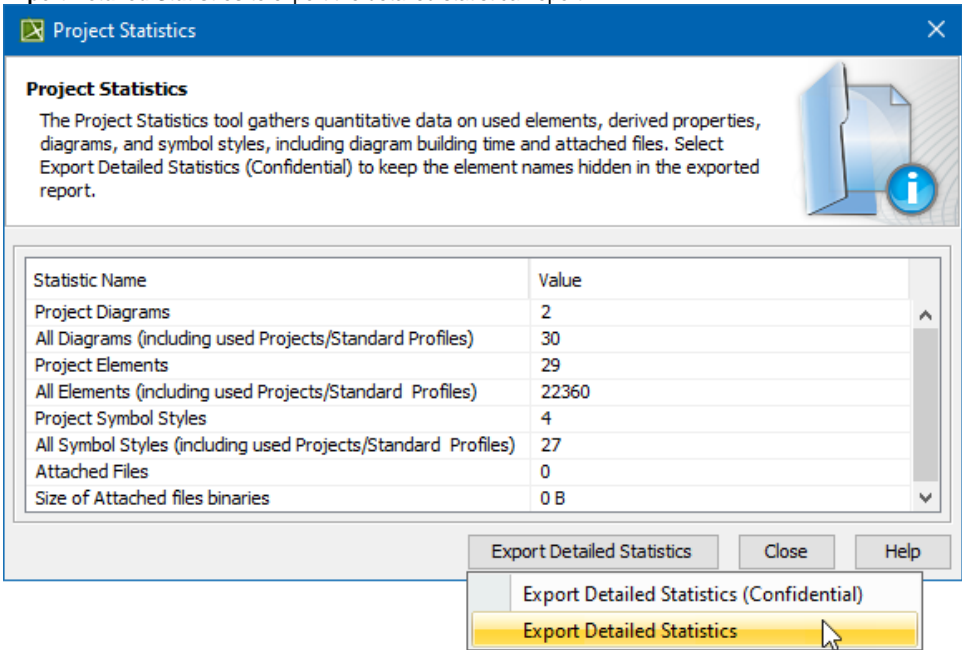
The exported file contains the names of the main project, used projects, and used elements. If they are confidential, you should select **Export Detailed Statistics (Confidential)** to keep their names hidden.

To export detailed statistics

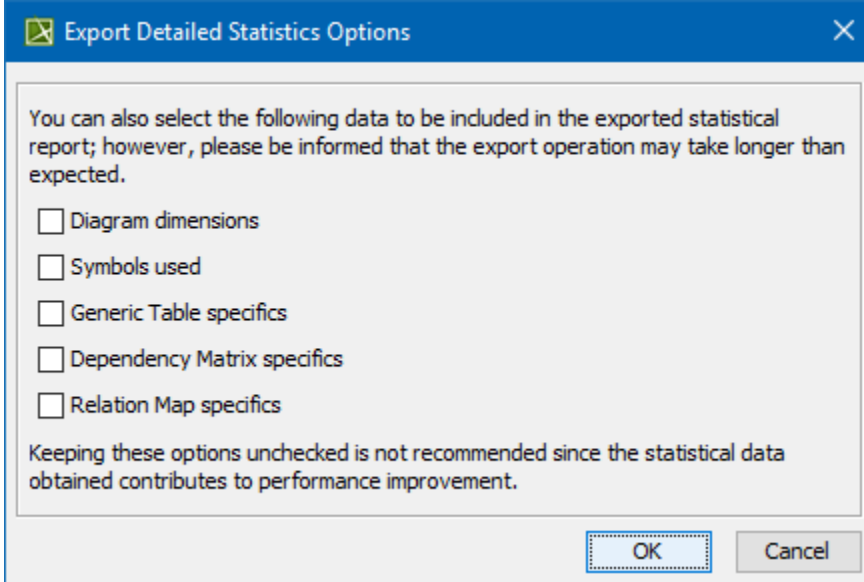
1. In the main menu, select **Tools > Project Statistics**.



2. In the **Project Statistics** dialog, click the **Export Detailed Statistics** button and choose one of the following:
- **Export Detailed Statistics (Confidential)** to export the statistical report with hidden element and project names.
 - **Export Detailed Statistics** to export the detailed statistical report.



3. In the **Export Detailed Statistics Options** dialog, select additional types of data to be included in the report and click **OK**.



4. When the statistics file is generated, click **Close**.

The generated detailed project statistics file includes the following quantitative data:

Diagrams

- Diagram dimensions
- Diagram count by type
- Diagram count by kind
- Symbol count by diagram

Elements

- Element count by UML type
- Element count by DSL type
- Derived properties count
- Property count by size
- Elements used for CDH mapping count
- Elements used for transformation mapping count
- Longest flat list count (longest flat list of elements under one element's root, e.g., under a package or a classifier)
- Smart package count
- Number of stereotype applications by stereotype name
- Number of stereotype tagged values by defining feature name and tagged value size
- Number of strings in the model by size and metaProperty
- Number of multi-references by size and metaProperty
- Number of profiling elements (stereotype instance, slots, and value specifications)

Project/Environment options

- Active/passive validation options
- Number of active validation rules by implementation language
- Number of code engineering options by language
- Symbol styles count
- Symbol styles properties count

Hardware & system

- Hardware (RAM, OS, disks size and type) and Java info (heap)
- Restricted dir size

Teamwork Cloud projects

- TWC project local cache size on disk
- TWC project local cache size in a binary blob
- TWC project history depth
- Locked elements count
- Used projects count

Performance

- Time to build diagrams