

# 19.0 LTR SP4 Version News



Released on: June 29, 2020

The new release presents significant **Licensing, Installation, and Other Changes**. Additionally, it adds improvements to the **Project Statistics** tool.

Users can now handle conflicts by **Resolving Conflicting Changes Automatically in Merge** in Collaborative modeling, and major **Memory Consumption Improvements in Merge** have been made.

Last but not least, a number of key issues detected in earlier versions, including those affecting modeling tool performance, have been fixed.

Download the newest MagicDraw version at [nomagic.com](http://nomagic.com) or contact your sales representative. Don't forget to give us your feedback on [LinkedIn](#), [Twitter](#), or [Facebook](#). For further information, please check the latest [documentation](#) and additional [resources](#).

## Modeling and Infrastructure

- [Licensing, Installation, and Other Changes](#)
- [Project Statistics](#)

## Collaboration

- [Resolving Conflicting Changes Automatically in Merge](#)
- [Memory Consumption Improvements in Merge](#)

## Other Features

- [Report Wizard](#)
- [Key Issues Fixed](#)

## Modeling and Infrastructure

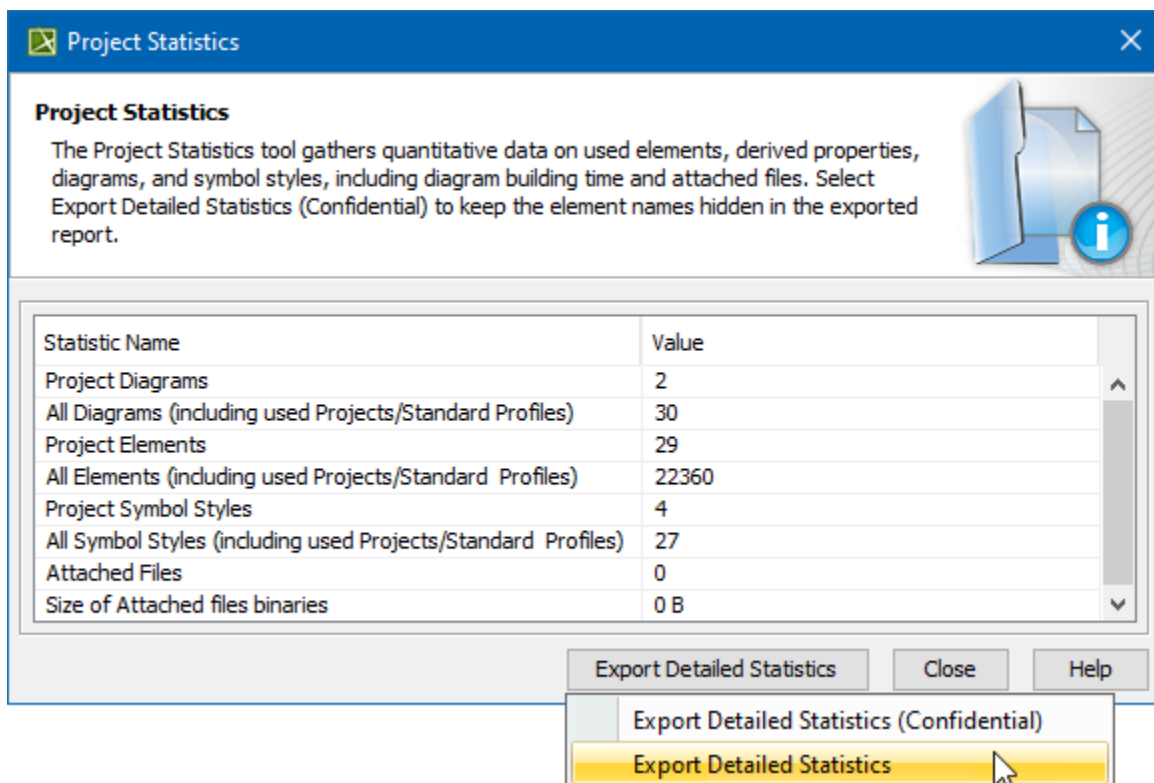
### Licensing, Installation, and Other Changes

The 19.0 SP4 release introduces important changes that affect licensing, installation, and other services you use directly from the modeling tool.

[Learn more about the implemented changes >>](#)

### Project Statistics

You can now contribute to improving the performance of the modeling tool and modeling experience. Simply export the Project Statistics report that is based on the quantitative data collected from your project and then share it with us.



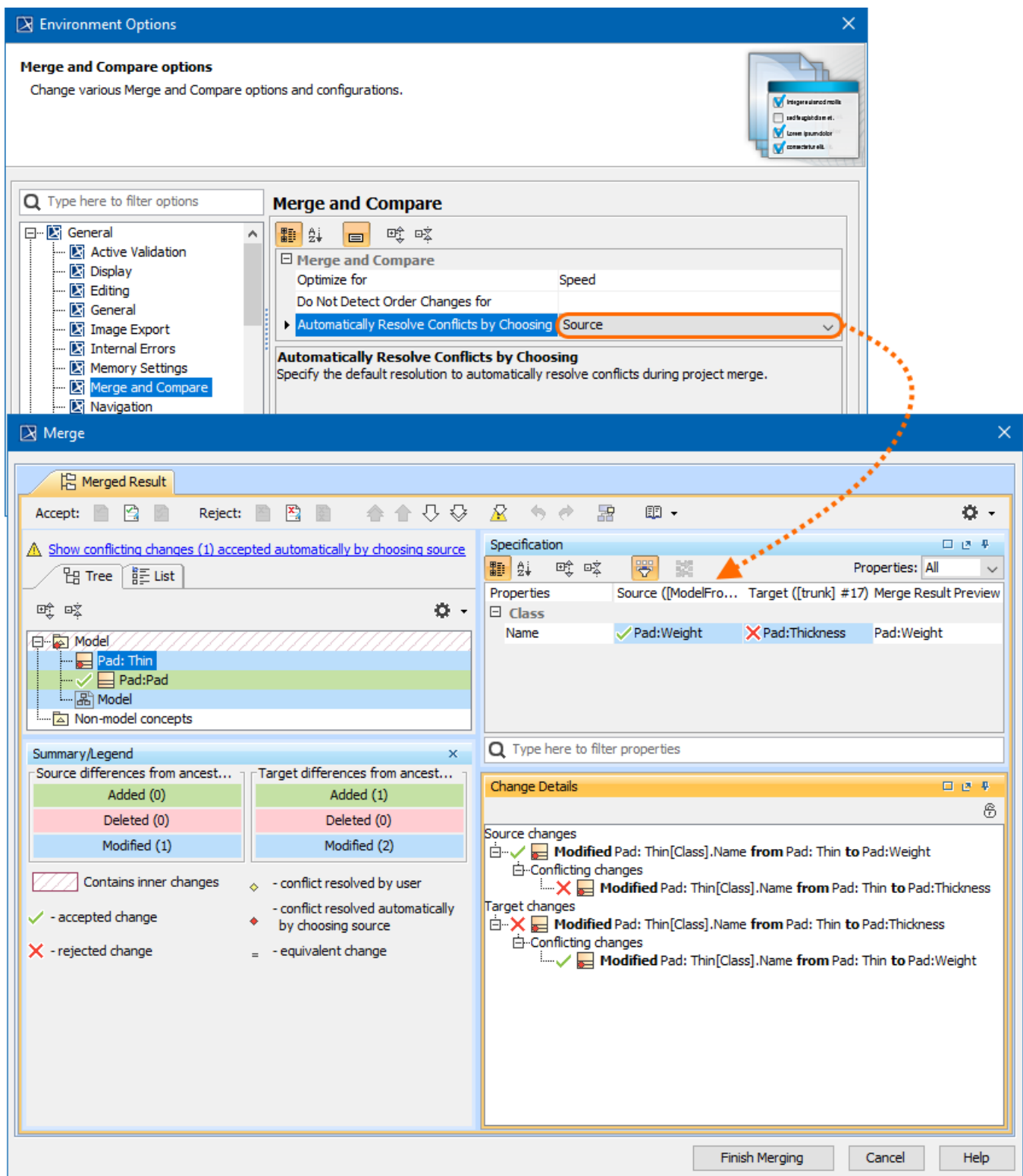
Exporting project statistics

[Learn more about Project Statistics >>](#)

Collaboration

## Resolving Conflicting Changes Automatically in Merge

Handle Merge conflicts more efficiently by tailoring the Merge behavior to your needs! From now on, in the **Environment** options dialog, you can specify either the Source or Target to be the default resolution when dealing with conflicting changes.

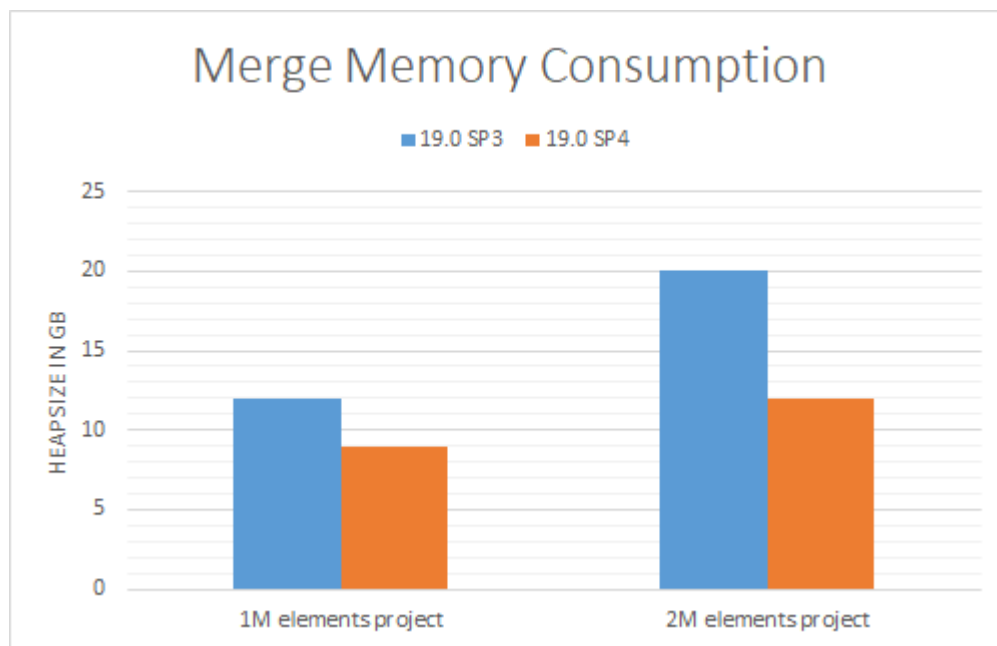


Automatically choosing Source as the default resolution during merge

[Learn more about resolving conflicting changes automatically >>](#)

## Memory Consumption Improvements in Merge

The latest release brings significant improvements to the Project Merge memory consumption. Specifically, with multiple optimizations in place, we reduced the memory footprint by 25%-40%, compared to version 19.0 SP3. The effect may vary from model to model, depending on the model's size, as well as the number and type of changes themselves.



Comparing memory consumption between different versions

### Other Features

### Report Wizard

- Bookmark functions for creating Microsoft Word references and hyperlinks are now available. [Learn more about Bookmark tool >>](#)
- You can sort elements that correspond to the Containment tree order. [Learn more how to use this sorter tool >>](#)

### Key Issues Fixed

The following key issues have been fixed with this version:

- No error occurs when uploading generated report files to the server through FTP and SSL in Report Wizard.
- The problem of the Dependency Matrix template displaying incomplete allocated dependencies in Report Wizard has now been solved.
- TWC projects that automatically used a system/standard profile while being used by a non-system/standard usage can now be exported into .mdzip.
- The direction of Item Flow can now be changed.
- Diagram validation is now faster in larger projects.
- The Transformation Wizard performance problems have been fixed.
- A new nested Instance is no longer created instead of being reused during the data import from Excel.
- Dialog overlapping no longer occurs when several dialogs are opened on MAC.



You can check [the list](#) of publicly available issues or your own reported issues fixed in MagicDraw 19.0 SP4.

**Note:** You will be required to login. Use the same username and password as for [www.nomagic.com](http://www.nomagic.com).

### Version news of servers and plugins

- [Teamwork Cloud 19.0 SP4](#)
- [SysML Plugin 19.0 SP4](#)
- [Cameo Simulation Toolkit 19.0 SP4](#)
- [UAF Plugin 19.0 SP4](#)
- [Cameo DataHub 19.0 SP4](#)
- [Cameo Safety and Reliability Analyzer 19.0 SP4](#)

### MagicDraw Documentation

- [MagicDraw 19.0 LTR](#)

### News of earlier versions

- [MagicDraw 19.0 LTR](#)
- [MagicDraw 18.5 FR](#)
- [MagicDraw 18.4 FR](#)
- [MagicDraw 18.3 FR](#)
- [Product News Archive](#)

