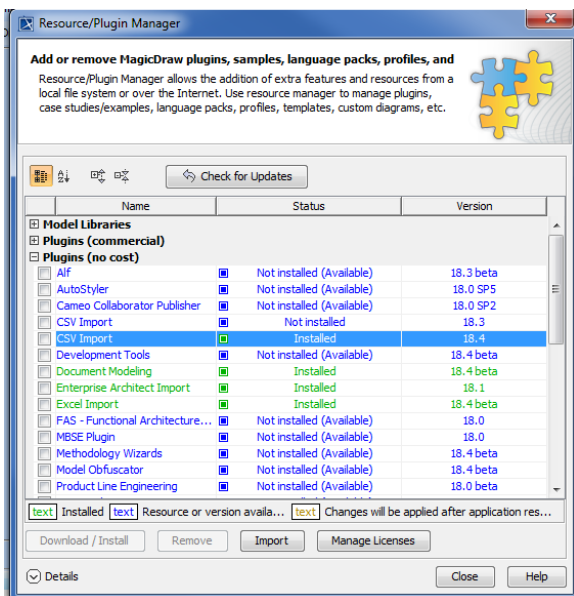


# Installation and update

You can download and install the CSV Import plugin on your computer through the menu item **Resource /Plugin Manager** under MagicDraw **Help** menu.

To install CSV Import using the Resource/Plugin Manager

1. Click **Help > Resource/Plugin Manager** on the MagicDraw main menu. The **Resource/Plugin Manager** dialog, see figure below, will open.



2. Click on **Plugins (no cost)** and select the **CSV Import** check box, and then click

**Download / Install**

3. Once the installation is complete, a message dialog informing you that the installation is complete will open. Click **OK**.

4. Restart **MagicDraw**.



You need to restart MagicDraw upon installing the CSV Import plugin on your computer to allow MagicDraw to load the plugin correctly.

Free updates are available through the **Resource/Plugin Manager** menu item in MagicDraw.

To see if any update is available for your plugin

1. Click **Help > Resource/Plugin Manager** on the MagicDraw main menu. The **Resource/Plugin Manager** dialog will open.
2. Click **Check for Updates > Check**.

**Download / Install**

3. Click