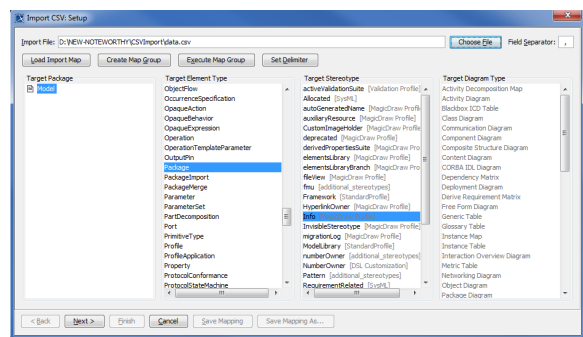


CSV Import setup

After you open a project, you can start the CSV Import plugin by clicking **File > Import From > Import CSV** on the MagicDraw main menu. The **Import CSV: Setup** dialog, see figure below, will appear.



The **Import CSV: Setup** dialog allows you to:

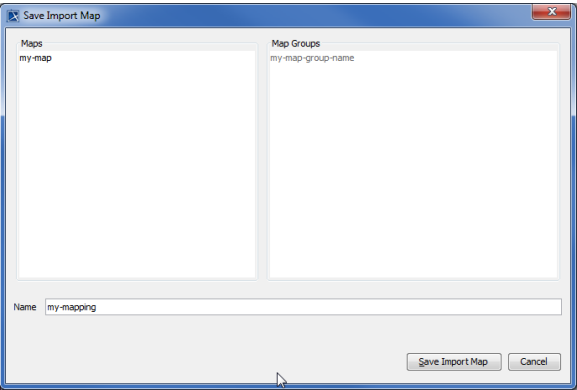
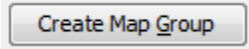
- Choose a CSV file to import.
- Declare a field separator, (the default field separator is comma) if you want to use a character other than a comma in your CSV file.
- Select a **Target Package**. This is the package where the imported object(s) will be stored.
- Select a **Target Element Type**.
- Select which **Target Stereotype** to apply.
- Choose a **Target Diagram Type** (necessary if you choose target type of Diagram).

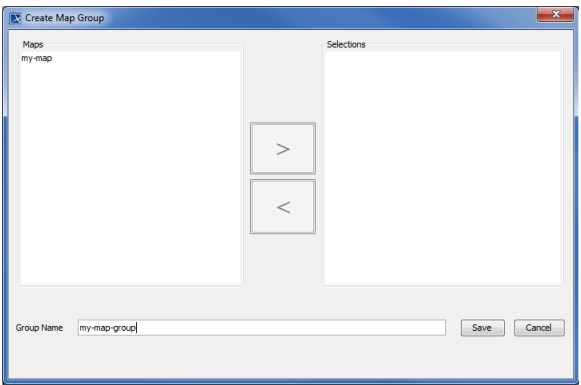
There is additional functionality available on the Import CSV Setup screen. The table below lists them all.



If you do not specify the **owner** property while importing, the package into which you import will become its owner by default.

Element	Functionality
<div>Import File: <input type="text" value="D:\NEW-NOTEWORTHY\CSVImport\data.csv"/> <input type="button" value="Choose File"/></div>	The Choose File button allows you to browse and select a CSV file that you want to import into MagicDraw.
<div>Field Separator: <input type="text" value=","/></div>	The Field Separator text box displays the current field separator.
<div><input type="button" value="Load Import Map"/></div>	The Load Import Map button opens the Model Imports dialog shown in the next row.

	<p>This Save Import Map dialog allows you to save the mapping from the current import and also enables you to provide a name for the mapping.</p> <p>An import map in the Maps column contains the mapping that has previously been saved into the model. An import map is a set of associations between columns from the CSV file and the properties they have been mapped to.</p>
	<p>The Create Map Group button opens the Create Map Group dialog in the next row.</p>



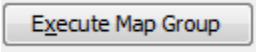
A Map Group

is a set of saved maps that are grouped under a specific map group name. Executing a map group will execute all the saved maps within it sequentially.

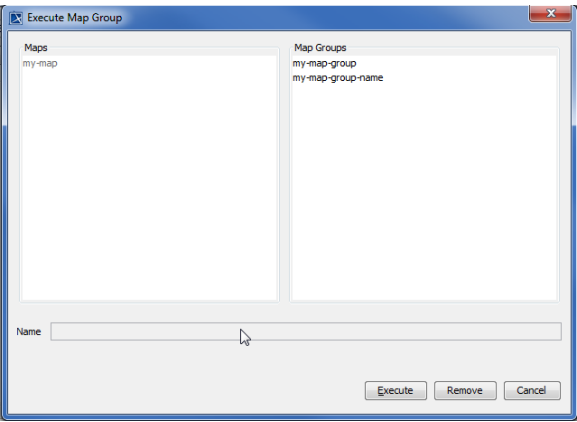

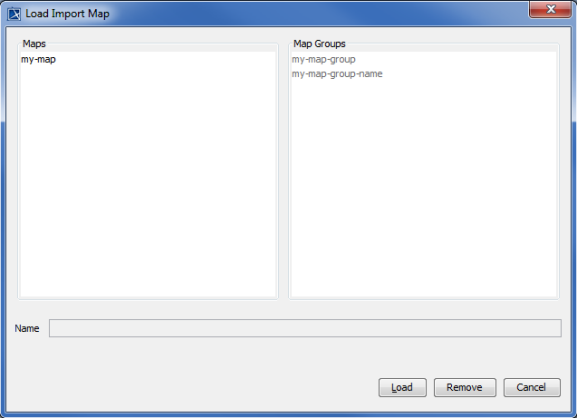
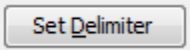
The Create Map Group

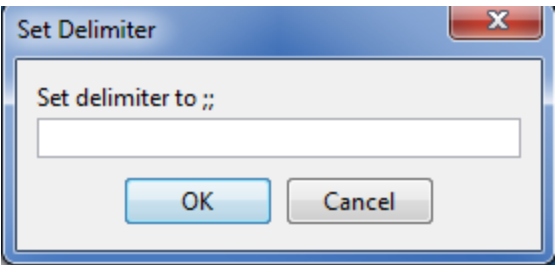
dialog lets you create a map group by specifying its name and also lets you move individual map files into or out of your map group using the buttons marked > and <.

See section - [Saving Your Choices](#) – Save Import Map, Load Import Map, Save Map Group, and Execute Map Group for more information about this dialog.



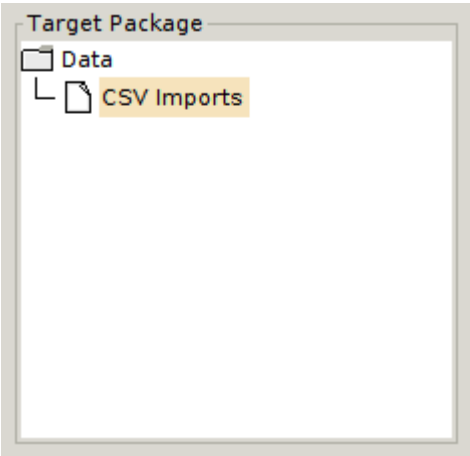
Clicking the **Execute Map Group** button brings up the **Model Imports** dialog shown in the next row.

	<p>The Execute Map Group dialog lists all the saved maps and map groups and allows you to execute them.</p> <p>See section - Saving your choices – Load Import Map, Create Map Group, and Execute Map Group for more information about this dialog.</p>
	<p>Clicking the Load Import Map will bring up the dialog shown on the next row.</p>
	<p>The Load Import Map dialog, shown alongside, enables a user to load an Import Map or remove it from the Map Group.</p>
	<p>Clicking the Set Delimiter button will open the Set Delimiter dialog shown in the next row.</p>

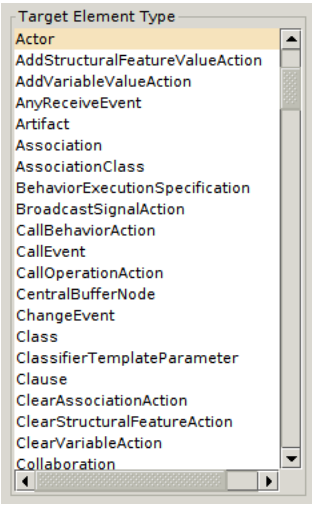


A value within a single cell may assume multiple values by using this character as the separator.

As opposed to the field separator which separates different column values, the delimiter separates values within a single column value.

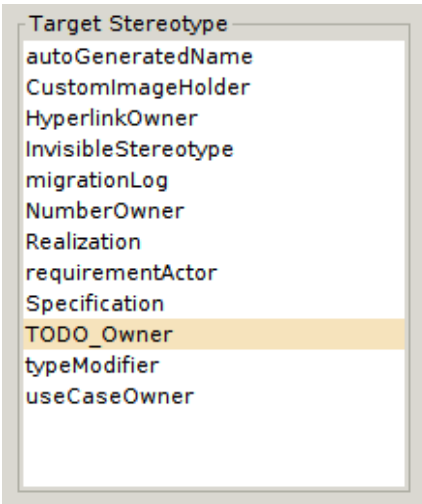
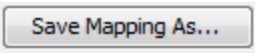
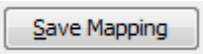

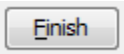


This **Target Package** column allows you to select a package into which you wish to import the CSV file contents.



The **Target Element Type** list allows you to select the type of object you are trying to import.

This type will be applied for all rows in your CSV file.

	<p>The Target Stereotype list is a list of stereotypes you can apply to your target element.</p> <p>Selecting the Target Stereotype is optional.</p> <p>Obviously, different target elements have different sets of applicable stereotypes.</p>
	<p>The Save Mapping As button enables you to save the mapping from the current import into the model. Clicking this button brings up a dialog which allows you to specify a name for the mapping.</p>
	<p>The Save Mapping button also brings up a dialog which enables you to save the mapping from the current import into your model.</p>
	<p>The Back and Next buttons are for navigating the CSV Import plugin wizard interface, the first screen of which is the Setup screen. Clicking Next will display the Mapping screen.</p>
	<p>The Finish button. This is enabled only after you have completed both the setup and mapping steps of the wizard.</p>

A rectangular button with a light gray background and a thin black border. The word "Cancel" is centered on the button in a black, sans-serif font. The first letter 'C' is underlined.

The **Cancel** button allows you to exit the CSV Import wizard interface.