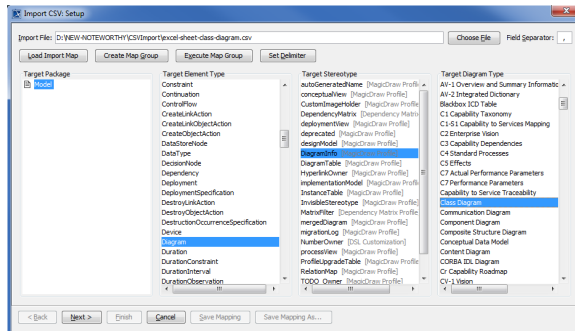


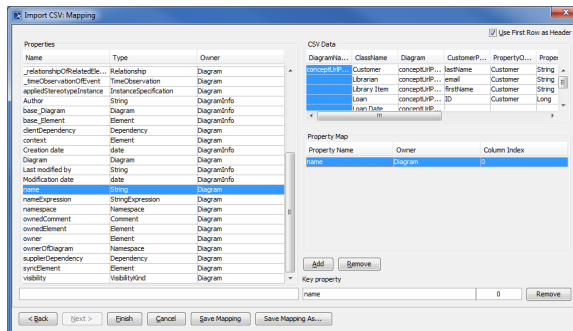
# Importing a class diagram

To create a diagram by importing data from a CSV file

1. Open an existing MagicDraw project or create a new project.
2. Click **File > Import From > Import CSV**. The **Import CSV: Setup** screen will appear, see figure below.



3. Click **Choose File** to browse and select the above CSV file.
4. Select a **Target Package** for the diagram.
5. Choose **Diagram** as the target element type since we are creating a diagram.
6. Choose **DiagramInfo** as the target stereotype.
7. Choose **Class Diagram** as the target diagram type.
8. Click **Next >**. The **Import CSV: Mapping** screen will open, see figure below.



9. Click the first column in your CSV Data table and select the attribute **Name** from the **Properties** table on the left-hand side, and then click the **Add** button to map them, see figure above.
10. Keep the name property from the **Properties** list selected, and also keep the **DiagramName**

column from CSV data source selected, then click the **Add** button beside the **Key Property** textboxes. The **Key Property** textboxes should populate as shown in figure above.

Finish

11. Click . Your MagicDraw **containment tree** should show the newly imported class diagram, see figure below.

