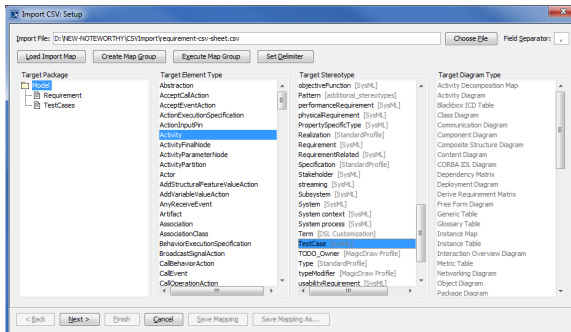


# Importing TestCases

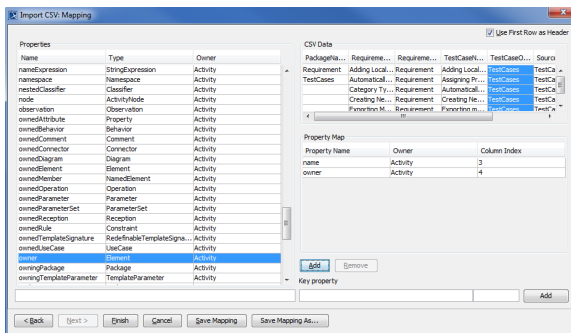
To import TestCases using CSV Import

1. Click **File > Import From > Import CSV** to open up the CSV Import plugin wizard interface, see figure below.



2. Click **Choose File** to browse and select your CSV file.
3. Select **TestCases** as the target package.
4. Select a target type of **Activity** and apply a stereotype of **TestCase** as shown in figure above.
5. Click **Next >**. The **Import CSV: Mapping** dialog will open, see figure below.
6. Select **TestCaseName** from the file and select name from the **Properties** list, and then click

**Add** to map them.



7. Keep the **name** property from the **Properties** list selected, and also keep the **TestCaseName**

column from CSV data source selected, then click the **Add** button beside the **Key Property** textboxes. The **Key Property** textboxes should populate as shown in figure above.

8. Select **TestCaseOwner** from the CSV file and select owner from the **Properties** list, and then

click **Add** to map them.

Finish

9. Click **Finish**. Your MagicDraw **containment area** will now contain the **testcases** you imported as shown in figure below.

