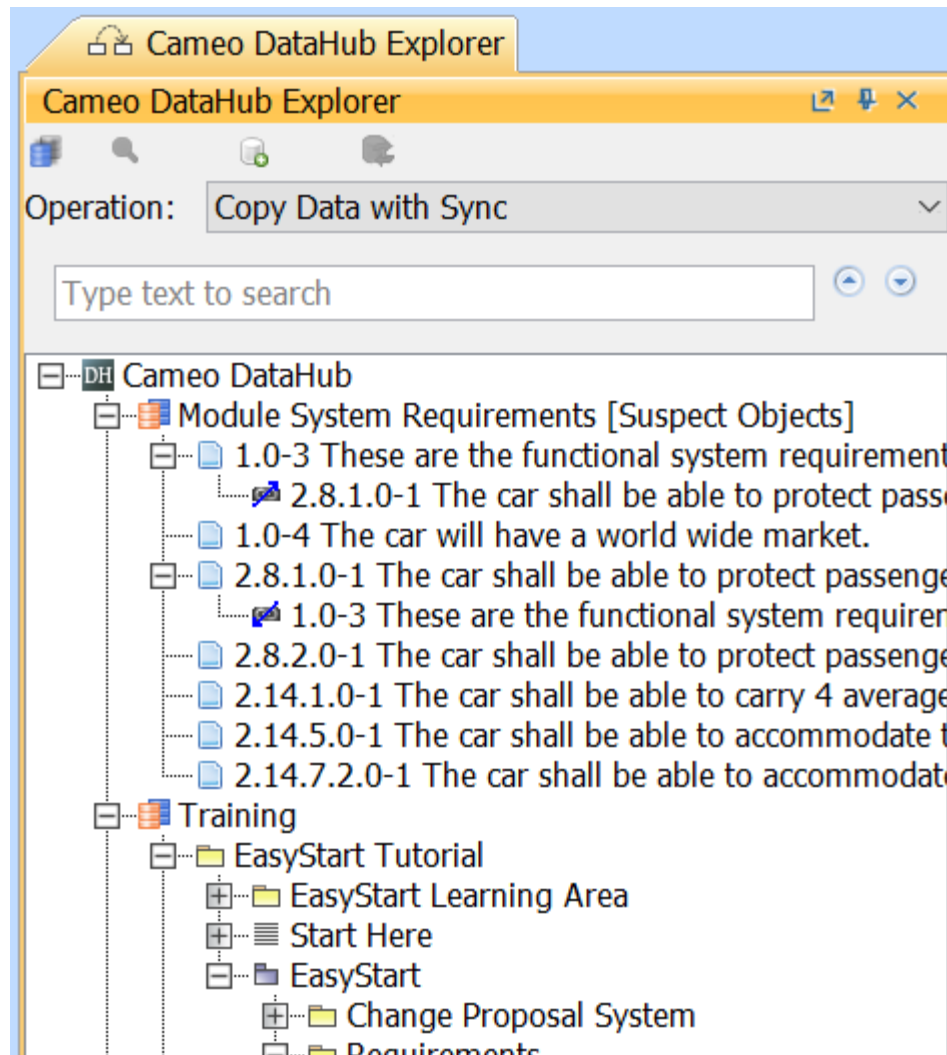


Displaying ancestors of filtered Requirements in DOORS View Data Source

When a Data Source is created for the DOORS View, it will display links the same way as the main Data Source that can be synchronized.

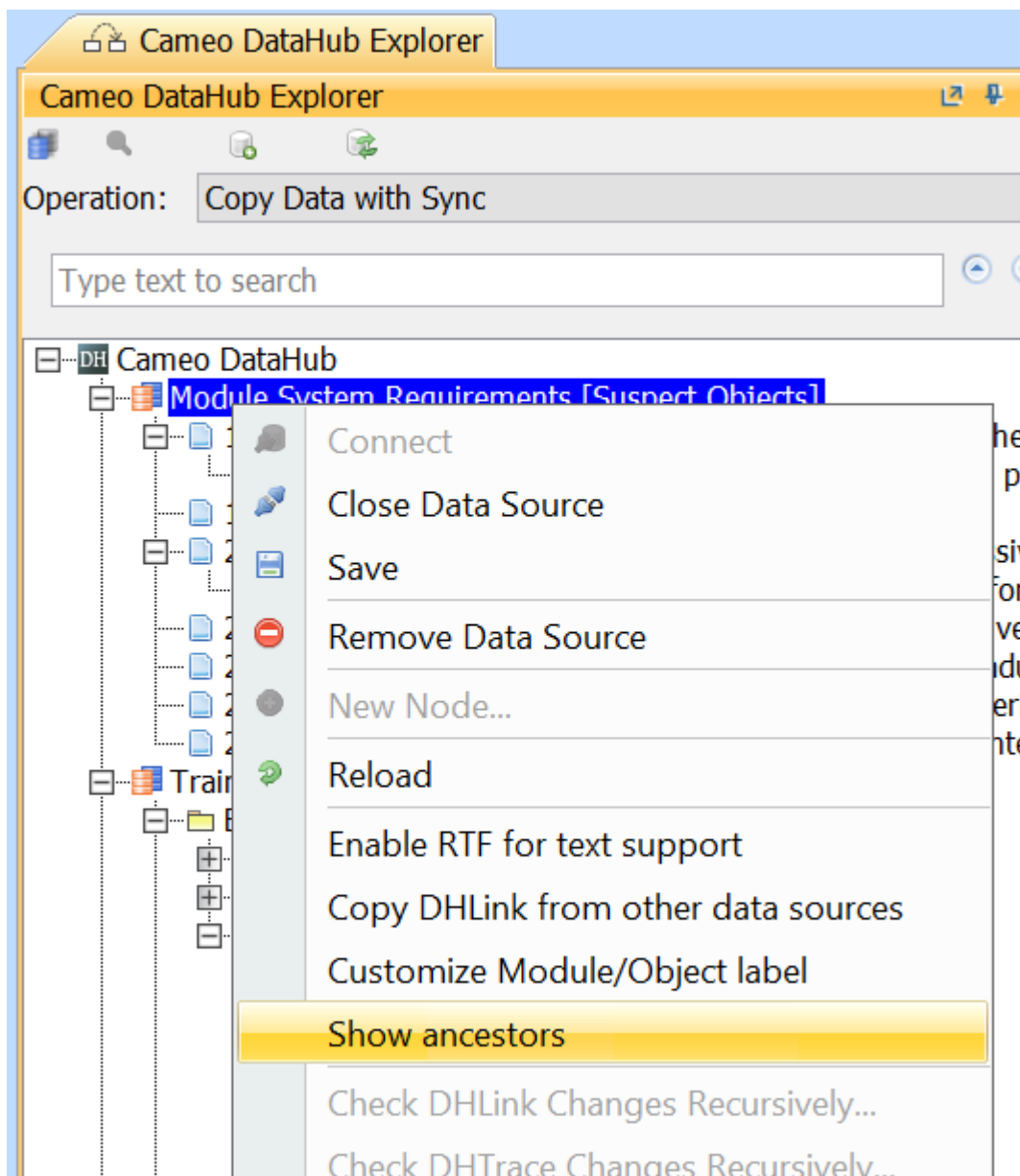


A DOORS View Data Source is created and displays links.

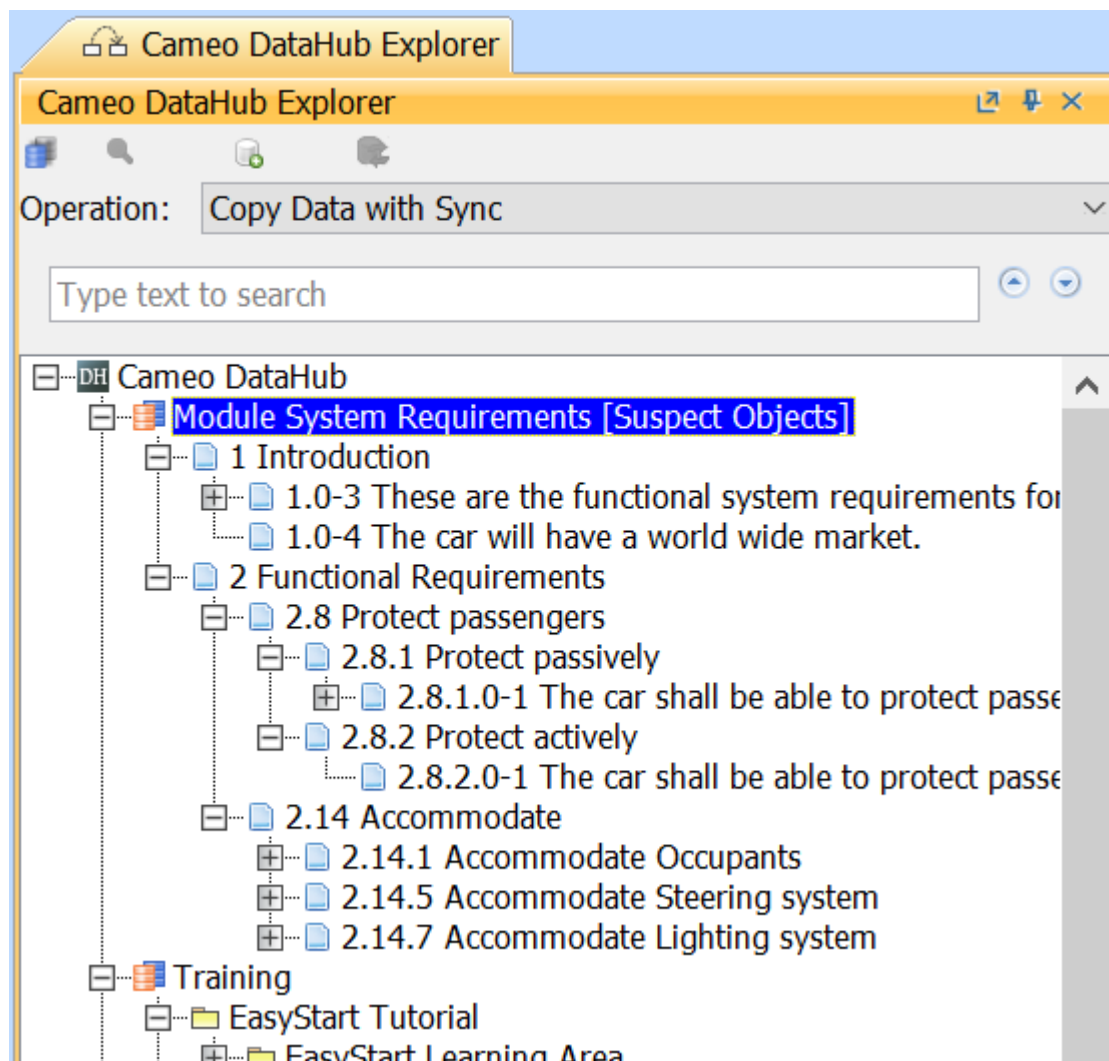
When you create a Module View in DOORS, there is an option to show Requirements with their ancestors. The Data Source for the DOORS View also can customize the filtered Requirements in the View to display their full ancestors in the tree hierarchy.

To allow the DOORS View Data Source to display ancestor of filtered Requirements

- Right-click the DOORS View Data Source and choose **Show ancestors**. The Data Source will be reloaded to show Requirements with their ancestors.



Using the Show ancestors command to display all ancestors of the filtered Requirements.



All ancestors of the filtered Requirements are displayed.