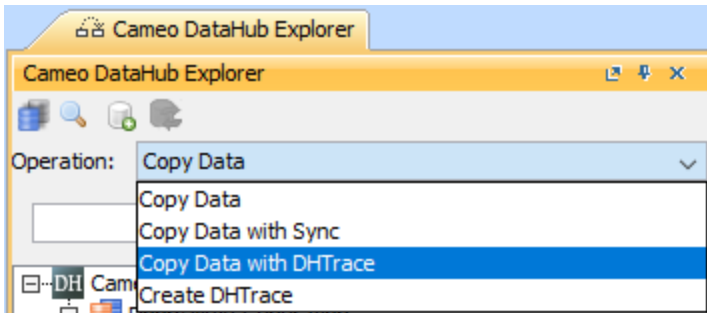


Copy Data with DHTrace operation

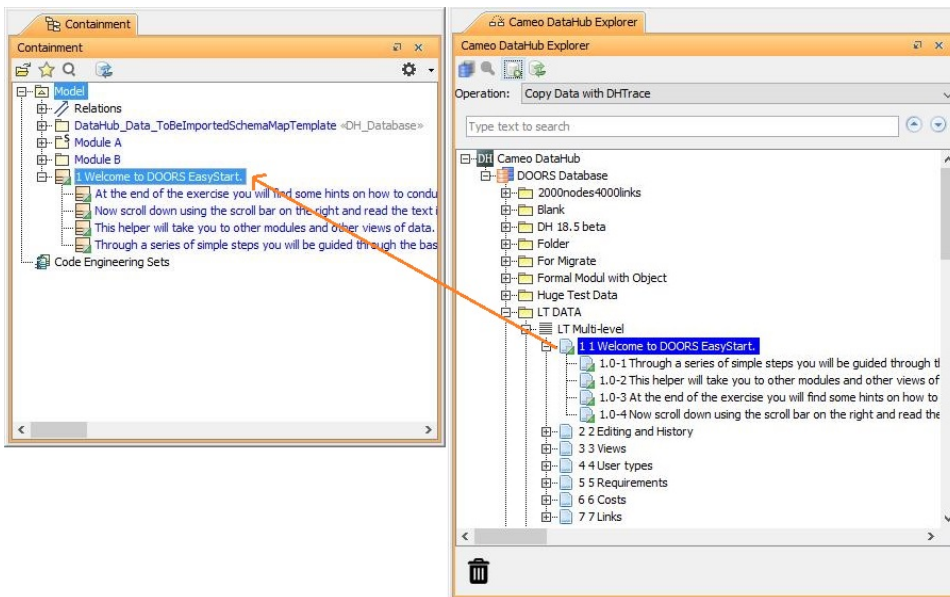
This DataHub operation is similar to **Copy Data with Sync**. Whereas the **Copy Data with Sync** operation is from source to target, from target to source, or bidirectional, the direction of synchronization does not affect the **Copy Data with DHTrace** operation. Only a link relationship is between source and target nodes. When either of the nodes changes, the **Copy Data with DHTrace** relationship is marked with the **Suspect** status and allows you to clear the **DHTrace** and validate the Requirement.

To copy data with DHTrace using the **Copy Data with DHTrace** operation from DataHub to MagicDraw[®] Containment area

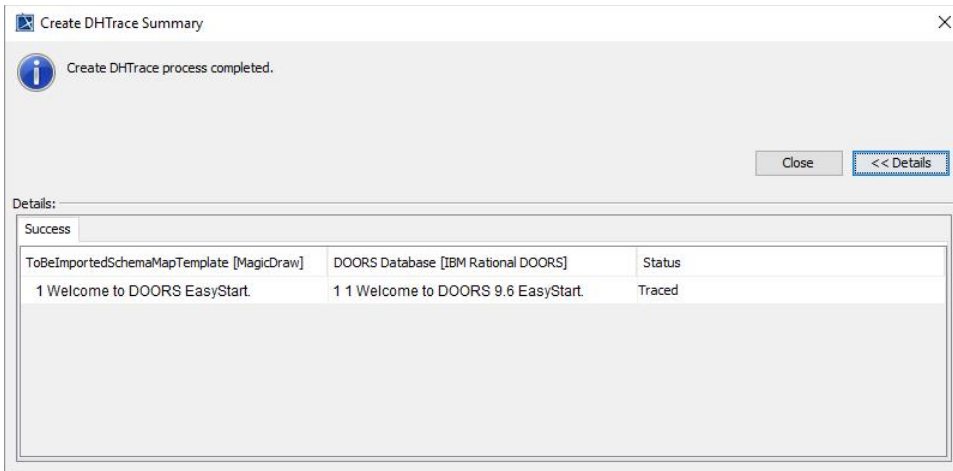
1. From the **Operation** drop-down list in DataHub Explorer, select **Copy Data with DHTrace**.



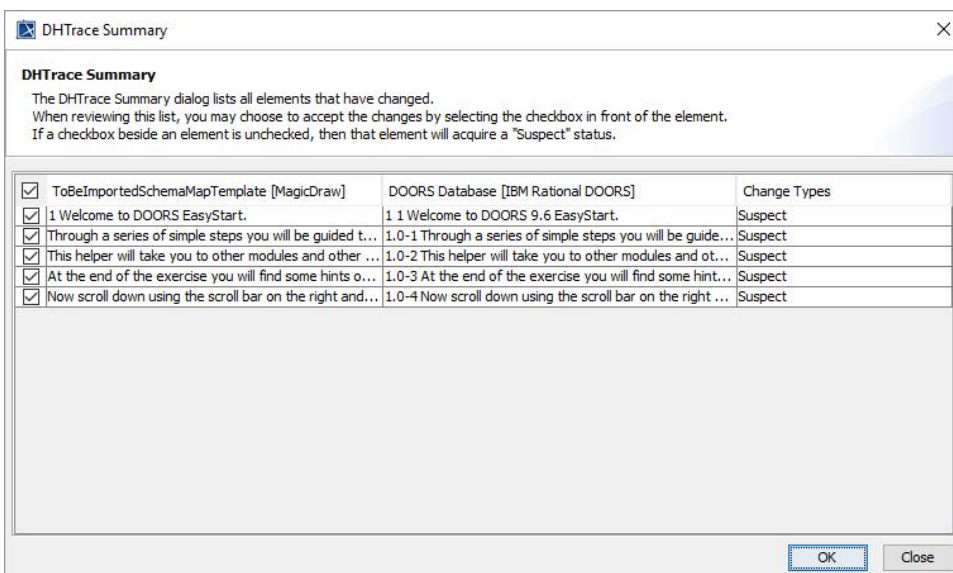
2. Drag the nodes you want to copy from DataHub Explorer to the MagicDraw Containment tree.



The **Create DHTrace Summary** dialog opens.



3. Complete [mapping source objects to target objects and mapping source attributes to target attributes for data copying](#).
4. Make some changes to any nodes on either of the source or target side such as editing a node properties and deleting a node.
5. Right click the changed node on either of the source or target side and select **Check Changes > Check DHTrace Changes Recursively**. The **DHTrace Summary** dialog opens.



6. Do one of the following
 - Select the check box on the left of the **Suspect** relationship and click **OK** to clear the **Suspect** trace link.
 - Leave the check box unchecked so that it will acquire the **Suspect** status.



Note

If you do not clear the Suspect **DHTrace** links, they will have the **Suspect** status.



Tip

Copy Data, **Copy Data with Sync** and **Copy Data with DHTrace** operations essentially copy data along with link information. To skip copying the link information, hold down **CTRL** while dragging the nodes to MagicDraw Containment area. This action ignores the links in the applications of the dragged nodes, e.g., DOORS 9.X links, DOORS Next Generation links, or MagicDraw links.