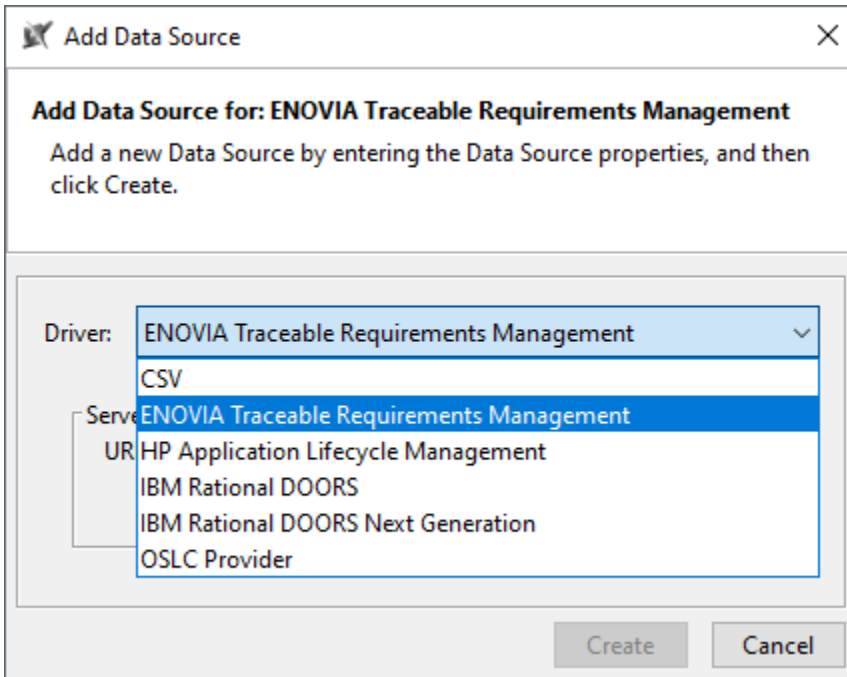


# Adding Data Sources for Enovia TRM

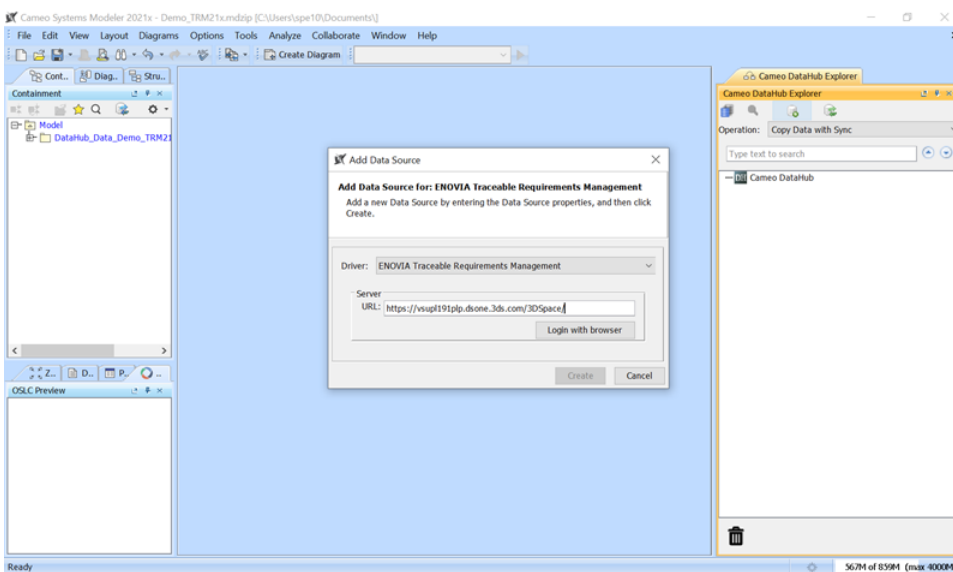
The latest application supported by Cameo DataHub is Enovia Traceable Requirement Management (TRM). TRM is the requirement management tool on the 3DEXPERIENCE platform. All data copy and synchronization features of Cameo DataHub that work with DOORS and CSV files will also be available for TRM Data Sources. In addition, the Single Sign On and SAML are also supported for passing authorization credentials to the platform.

To add an Enovia TRM Data Source

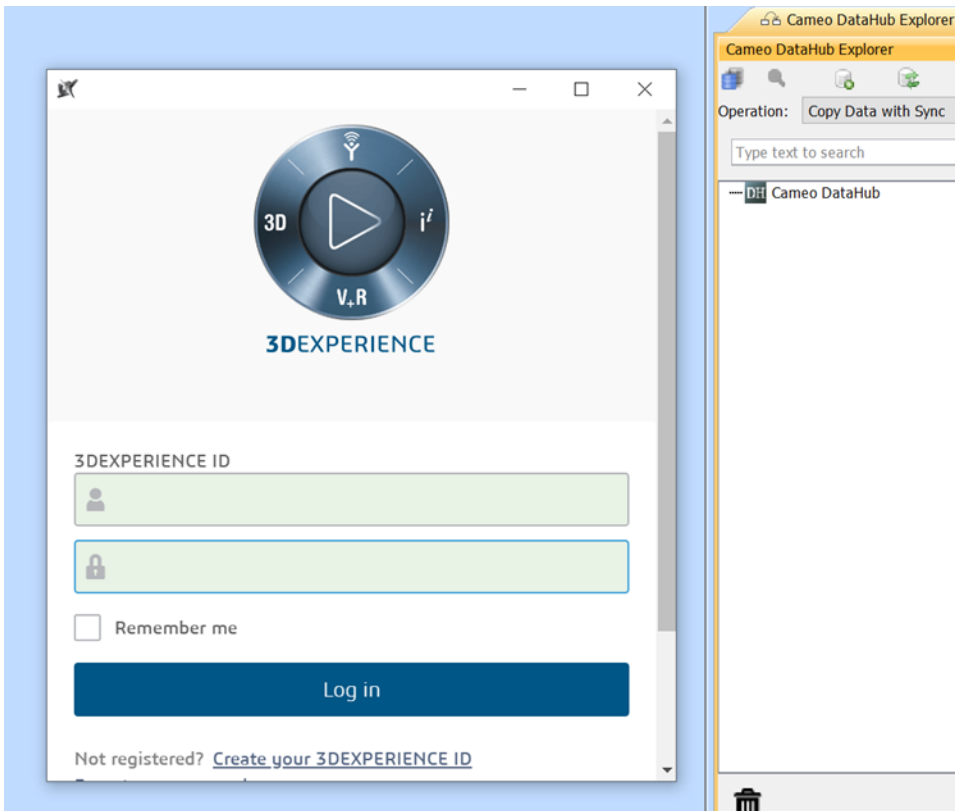
1. On the DataHub Explorer tab, click **<Add Data Source>**. The **Add Data Source** dialog opens.
2. From the **Driver** list, choose **ENOVIA Traceable Requirements Management**.



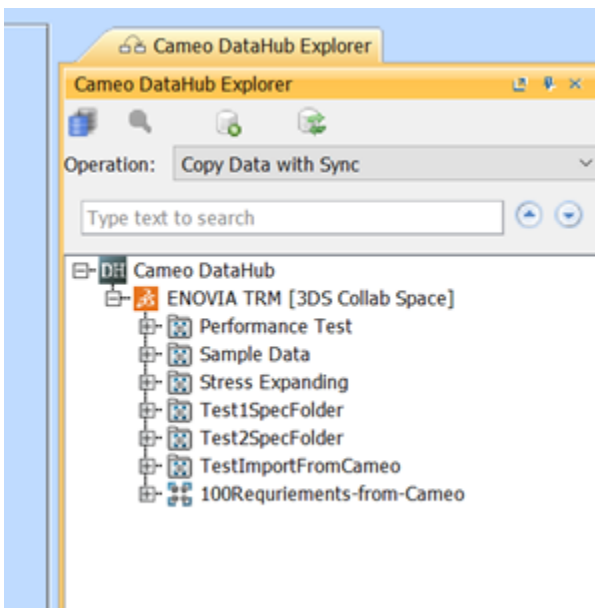
3. Enter the address of the 3DEXPERIENCE/3DSpace and click **Login with browser**.



4. Log on through the embedded browser shown in the login page.



5. When the login is done, close the login dialog. DataHub will add the TRM Data Source to DataHub Explorer.



When the TRM Data Source is connected, you can continue with [basic features of DataHub](#).

#### Related page

- [Mapping source and target types to copy data to and from a modelling tool](#)