


incompatible representation attribute

On this page:

- [Specifying the incompatible representation attribute](#)
- [Removing a Data Marking from the incompatible list](#)

The incompatible representation attribute is used to specify which Data Markings are incompatible and cannot be added to the same element. As a result, if incompatible Data Markings are added to the same element, the [Inconsistent Data Markings \(Incompatible Tag\)](#) validation error occurs.



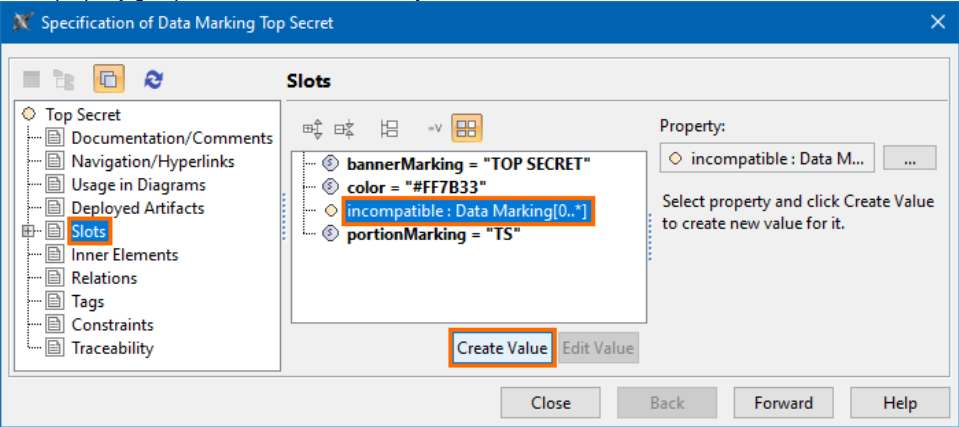
Important

If you make changes to the incompatible representation attribute, make sure to refresh the project (click F5 on the keyboard or click **View > Refresh** in the tool) in order to see the changes on the element portion markings.

Specifying the incompatible representation attribute

To specify the incompatible representation attribute

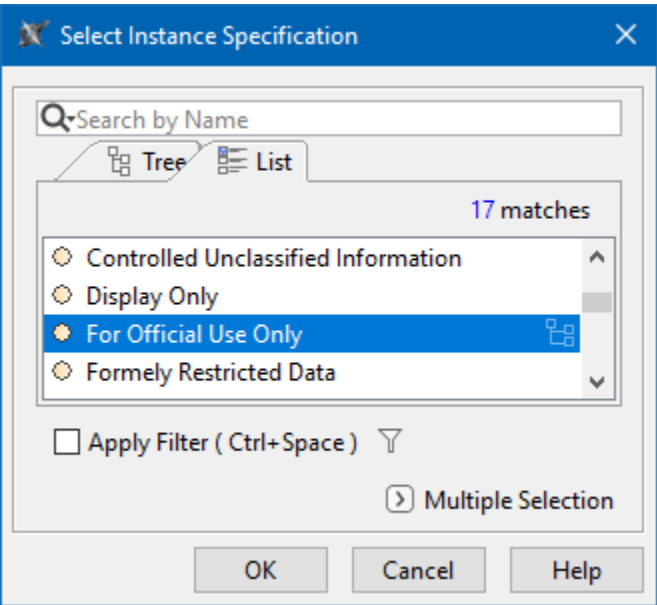
- **Through the Data Marking element:**
 1. Right-click the Data Marking element and open its **Specification window**.
 2. In the property group list, select **Slots > incompatible >** and click the **Create Value** button. **Select Instance Specification** dialog opens.




3. Select the Data Marking(s) that you want the current Data Marking to be incompatible with. Click **OK**.

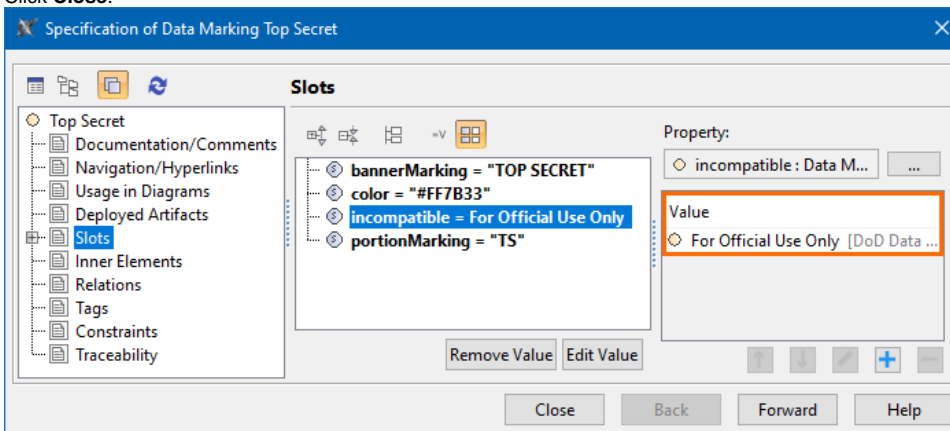


You can use the **Multiple Selection** option to select multiple Data Markings at once.



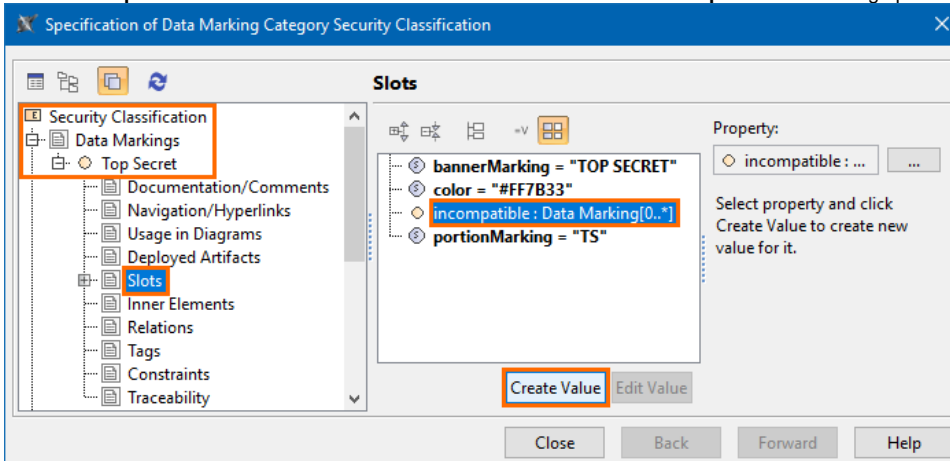
4. (Optional) Click the  button to add another Data Marking that you want the current Data Marking to be incompatible with.

5. Click **Close**.



- **Through the Data Marking Category element:**

1. Right-click the Data Marking Category element and open its **Specification window**.
2. In the property group list, expand **Data Markings**. Data Marking elements that belong to the category appear.
3. Expand the Data Markings element you want to edit and select **Slots**.
4. Select **incompatible** and click the **Create Value** button. The **Select Instance Specification** dialog opens.



5. Select the Data Marking(s) that you want the current Data Marking to be incompatible with. Click **OK**.
6. (Optional) Click **+** button to add another Data Marking that you want the current Data Marking to be incompatible with.
7. Click **Close**.

Removing a Data Marking from the incompatible list

To remove a Data Marking from the incompatible list

- **Through the Data Marking element:**

1. Right-click the Data Marking element and open its **Specification window**.
2. In the property group list, select **Slots > incompatible**.
3. In the **Value** box on the right side of the dialog, select the Data Marking you want to remove.
4. Click the **-** button to remove the Data Marking.
5. Click **Close**.

- **Through the Data Marking Category element:**

1. Right-click the Data Marking Category element and open its **Specification window**.
2. In the property group list, select **Data Markings**. Data Marking elements that belong to the category appear.
3. Expand the Data Markings element you want to edit and select **Slots**.
4. Click **incompatible** slot and select the Data Marking you want to remove.
5. Click the **-** button to remove the selected Data Marking.
6. Click **Close**.