

# Enabling 3DEXPERIENCE collaboration in a modeling tool

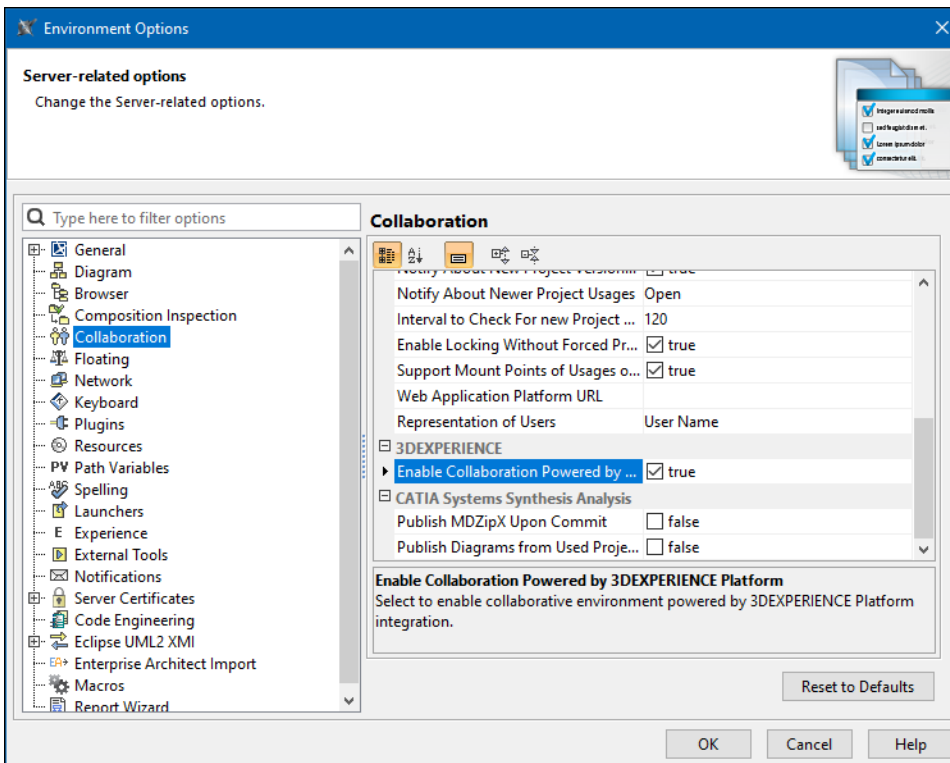
To start collaborating on projects in the 3DEXPERIENCE platform, first you need to enable the collaboration environment powered by the 3DEXPERIENCE platform in your modeling tool.



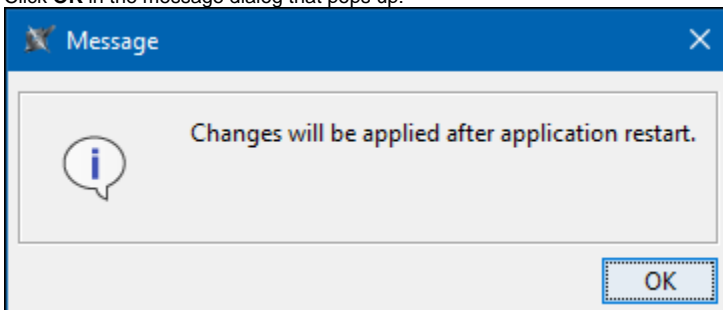
If you launch your modeling tool through the platform, these steps are not necessary because you will be automatically logged in to the platform.

To enable collaboration powered by the 3DEXPERIENCE platform

1. In the main menu of your modeling tool, select **Options > Environment**.
2. On the left side of the **Environment Options** dialog, select the **Collaboration** option group.
3. In the option specification pane, set the **Enable Collaboration Powered by 3DEXPERIENCE Platform** option to *true*.



4. Click **OK** to close the **Environment Options** dialog.
5. Click **OK** in the message dialog that pops up:



6. Restart the modeling tool to apply changes.

After enabling the collaboration environment, you can log in to the 3DEXPERIENCE platform and start a collaboration session.