

# Specifying Containment Markings

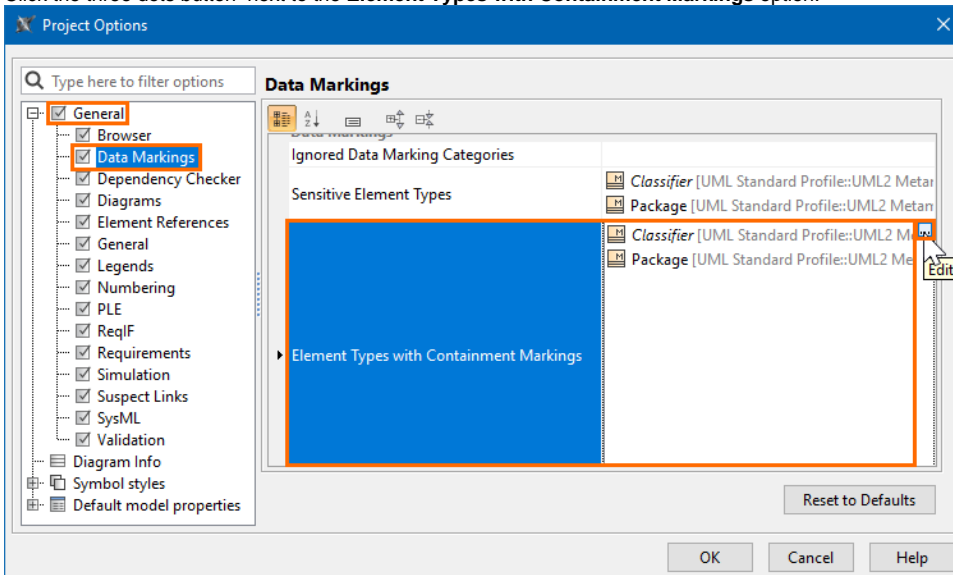
Containment Markings are displayed on the parent element, indicating the owned elements' Data Markings. They are displayed in parentheses as postfixes next to the element name. You can easily [update Containment Markings](#) of either a single element or multiple ones of the same type (recursively) via the Data Markings & Classification shortcut menu. To [work with Containment Markings](#), you will first need to specify the element types that can have the Containment Markings displayed.

If you make changes to the **Element Types with Containment Markings** option, make sure to [update the Containment Markings](#) of the project to see the changes.

## Specifying element types with Containment Markings

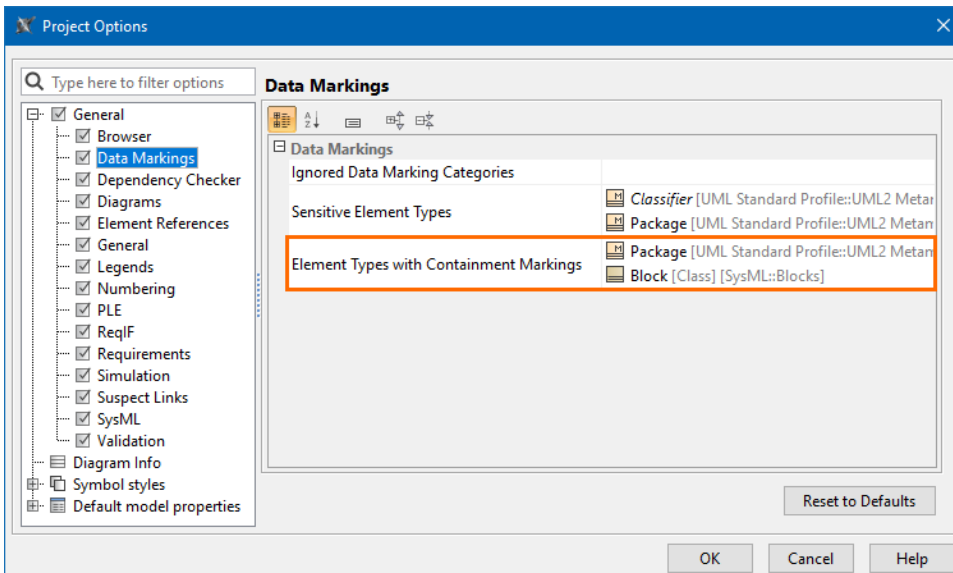
To specify element types with Containment Markings

1. In the main menu, select **Options > Project**. The **Project Options** dialog opens.
2. In the **General** group, select **Data Markings**.
3. Click the three dots button next to the **Element Types with Containment Markings** option.



4. In the **Select Element Type** dialog, select the element types that should have Containment Markings displayed. Click **OK**.

By default, the option is set to *Classifier* and *Package*.



5. Click **OK**.

#### Related pages

- [Working with Containment Markings](#)