

Missing Data Marking

Abbreviation

MDM

Description

The validation rule checks if there are elements that are specified to have Data Markings in the **Sensitive Element Types** project option but do not have any Data Markings added.

Severity

warning

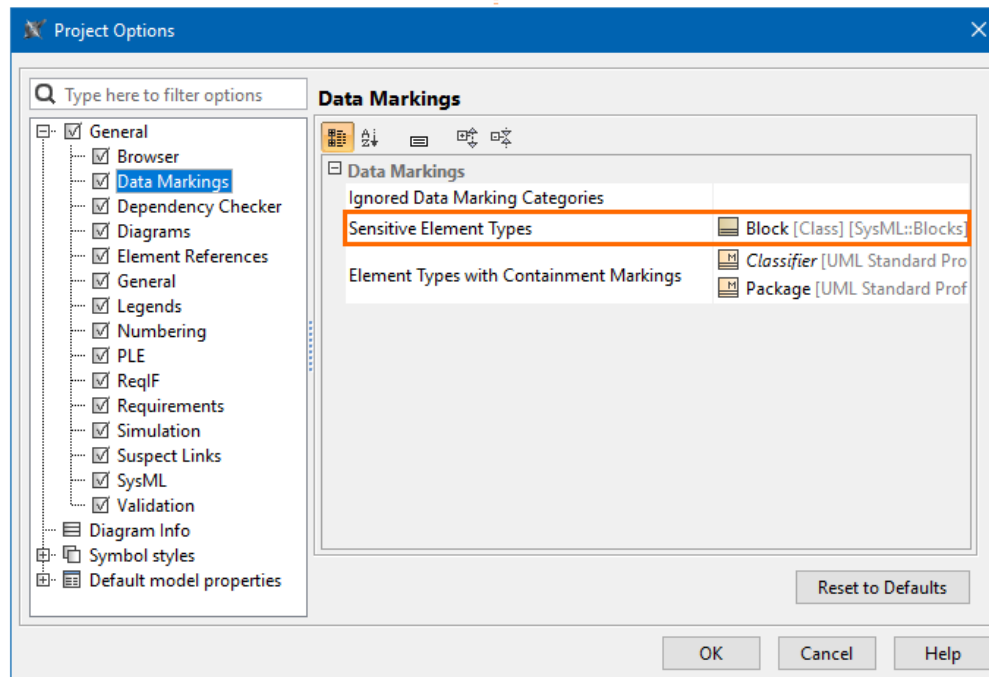
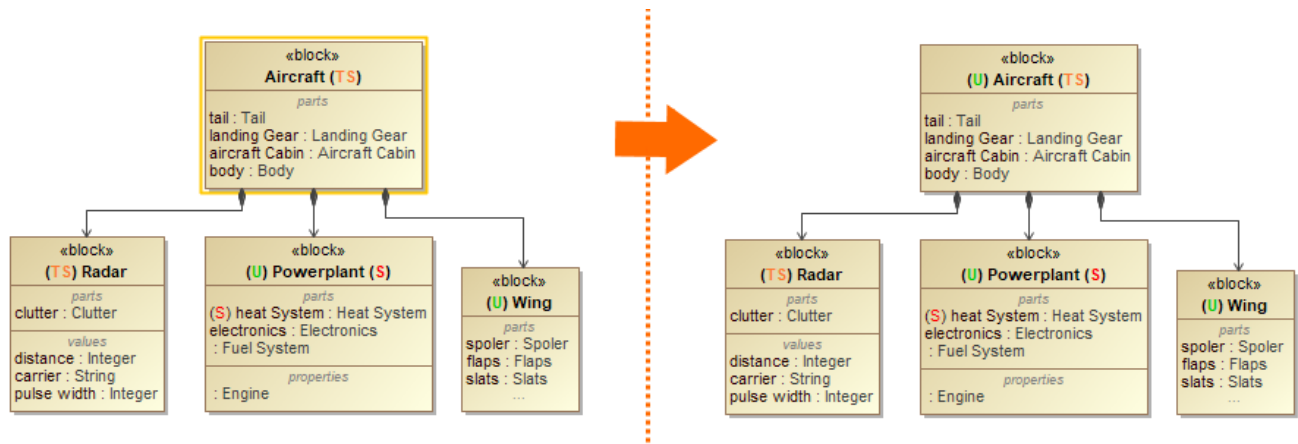
Constrained Element

Element

Solvers

To fix this, make sure the element has an added Data Marking.

Example



The **Sensitive Element Types** project option is set to a Block; thus, the Block element must have an added Data Marking. The error is resolved when the Block *Aircraft* is added a Data Marking.