

2024x Version News

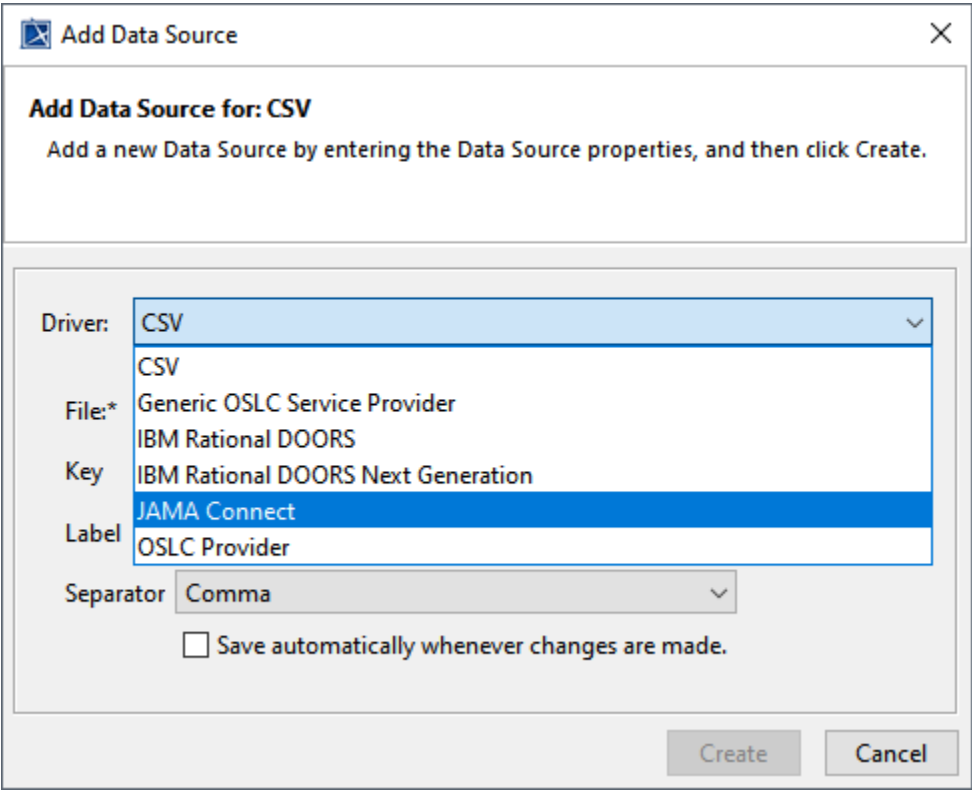


Released on: November 10, 2023

In version 2024x, we have put a lot of effort into delivering the new driver, Jama Connect® (Technology Preview). You can now use the new Jama Connect driver to add data sources in the Cameo DataHub Explorer panel. The Jama Connect driver is only available as a technology preview and should not be used for production. Learn more about the [supported features](#), [expected features](#), and [limitations](#) below.

Jama Connect®(Technology Preview)

For adding data sources, a new Jama Connect driver has been added to the list of existing drivers. You can authenticate with the aid of your User Name and password. As of now, data copying and synchronization can be done only from Jama Connect to the Modelling tool. Data copying and synchronization from the Modeling tool to Jama Connect will be available beginning with the next DataHub release.



The new driver Jama Connect available in the driver list

Supported features

1. You can authenticate with the aid of your User Name and password. Connection to both the Cloud and On-premise versions of Jama Connect is possible.
2. When connected, you can see the list of all projects available in the Jama Connect web app.
3. You can drill down the structure of a project selected from the list of all projects available to you. This feature is affected by [limitation#1](#) and [limitation#2](#).
4. The list of properties is available when you double-click the selected Jama Connect Project item
5. Currently, you can only synchronize the selected part of your project from Jama Connect to the Cameo Model. This feature is affected by [limitation #3](#).

6. The Scheme Map Manager is available to map, create, update, import, export, or set to be used by default data mappings between the Cameo Model and the Jama Connect project.
7. When the synchronized part of the Jama Connect project is updated on the Jama Connect or Cameo model side, the "Check for change" command is available to visually represent the difference. "New", "Moved", "Delete" and other statuses are represented with different background colors for visual clarity. It is also possible to see which exact property is updated, as well as the new value.
8. Once the change is confirmed for either all or selected items, the Cameo model is updated.

Features expected in next releases

1. More Jama Connect item properties will be available for mappings.
2. Two-way synchronization from the Jama Connect to the modeling tool and vice versa will be supported.
3. Images will be available to synchronize.
4. Diagram synchronization from the modeling tool to the Jama Connect project will be available.
5. Support for browser-based authentication will be available.
6. Diagram synchronization process from the command line UI will be available.
7. Data synchronization process from the command line will be available. The synchronization-related settings will be stored on the configuration file.

Limitations of Jama Connect

1. The link representation in the Cameo Datahub tree is incorrect.
2. The sync icon is not shown for child elements.
3. The project structure is not copied correctly to the modeling tool.

Cameo DataHub documentation

- [Cameo DataHub Documentation](#)

News of earlier versions

- [Cameo Datahub 2022x Refresh2](#)
- [Cameo Datahub 2022x Refresh1](#)
- [Cameo Datahub 2022x](#)
- [Cameo DataHub 2021x Refresh2](#)
- [Cameo DataHub 2021x Refresh1](#)
- [Cameo DataHub 2021x](#)
- [Cameo DataHub 19.0 LTR SP4](#)
- [Cameo DataHub 19.0 LTR SP3](#)
- [Cameo DataHub 19.0 LTR SP2](#)
- [Cameo DataHub 19.0 LTR SP1](#)
- [Cameo DataHub 19.0 LTR](#)
- [Product News Archive](#)