

# Adding Data Markings Recursively

In addition to adding Data Markings to elements individually, you can recursively add selected Data Markings to multiple project elements via the parent element.



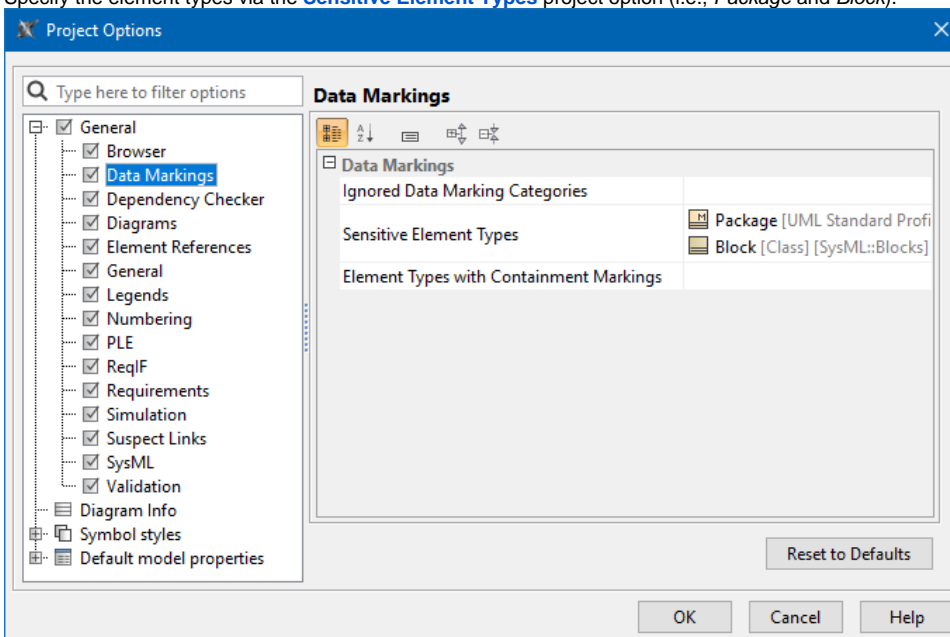
## Important

- The **Add Recursively** action adds the selected Data Markings to the element on which the action is executed and the elements owned by it if their type is specified in the **Sensitive Element Types** project option. If an element type is not specified in the project option, the Data Markings cannot be added to it recursively.
- If an element already had Data Markings prior to executing the **Add Recursively** action, both new and prior Data Markings are added.
- Data Markings cannot be removed recursively. To remove recursively added Data Markings, you need to select the individual elements. [Learn more >>](#)

## Adding Data Markings to multiple elements recursively

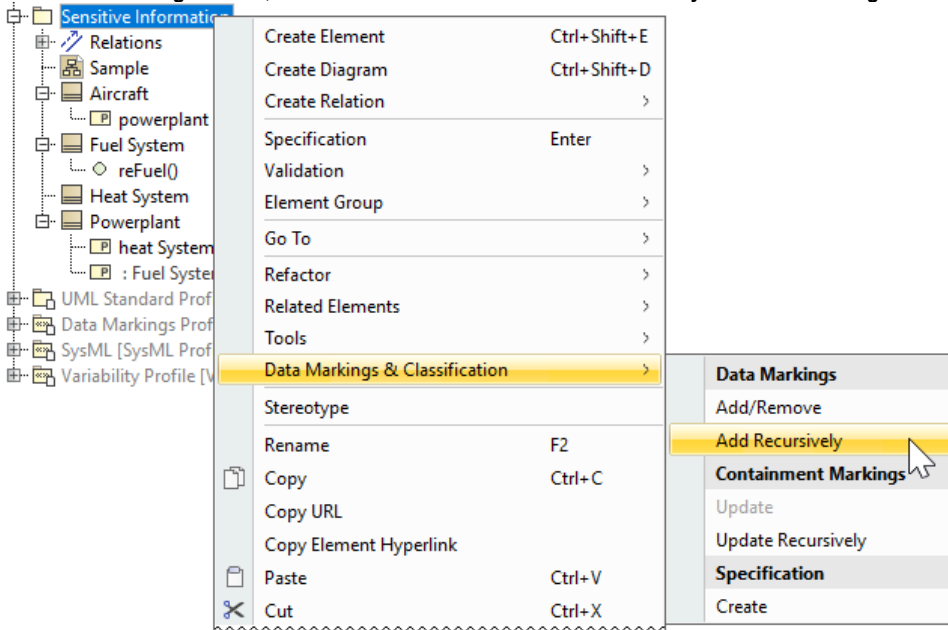
To add Data Markings to multiple elements recursively

1. Specify the element types via the **Sensitive Element Types** project option (i.e., *Package* and *Block*).

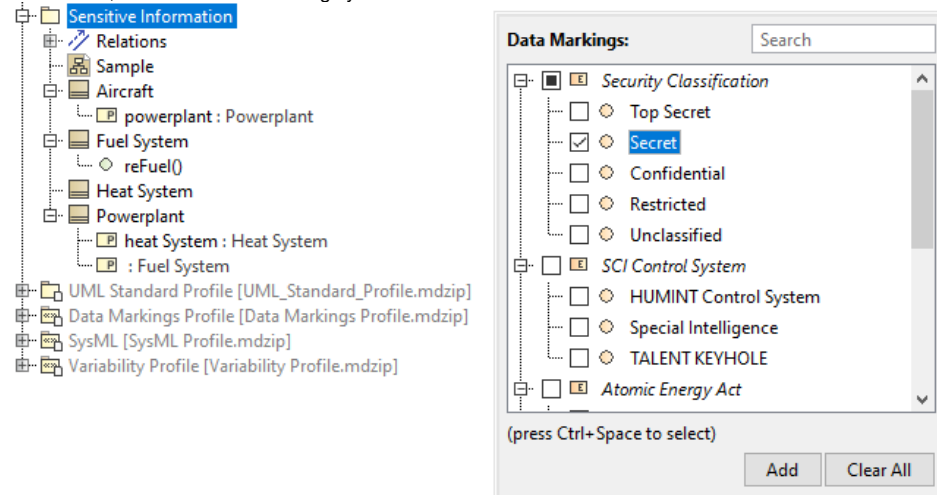


2. Right-click an element or its symbol, and in the shortcut menu, select **Data Markings & Classification**.

3. In the **Data Markings** section, click **Add/Remove** and select **Add Recursively**. The **Data Markings** menu opens.



4. In the menu, select the Data Markings you want to add and click **Add**.



The Data Markings are added to the selected element and the elements owned by it if their element type is specified in the **Sensitive Element Types** project option (in this case, Blocks and Packages).

