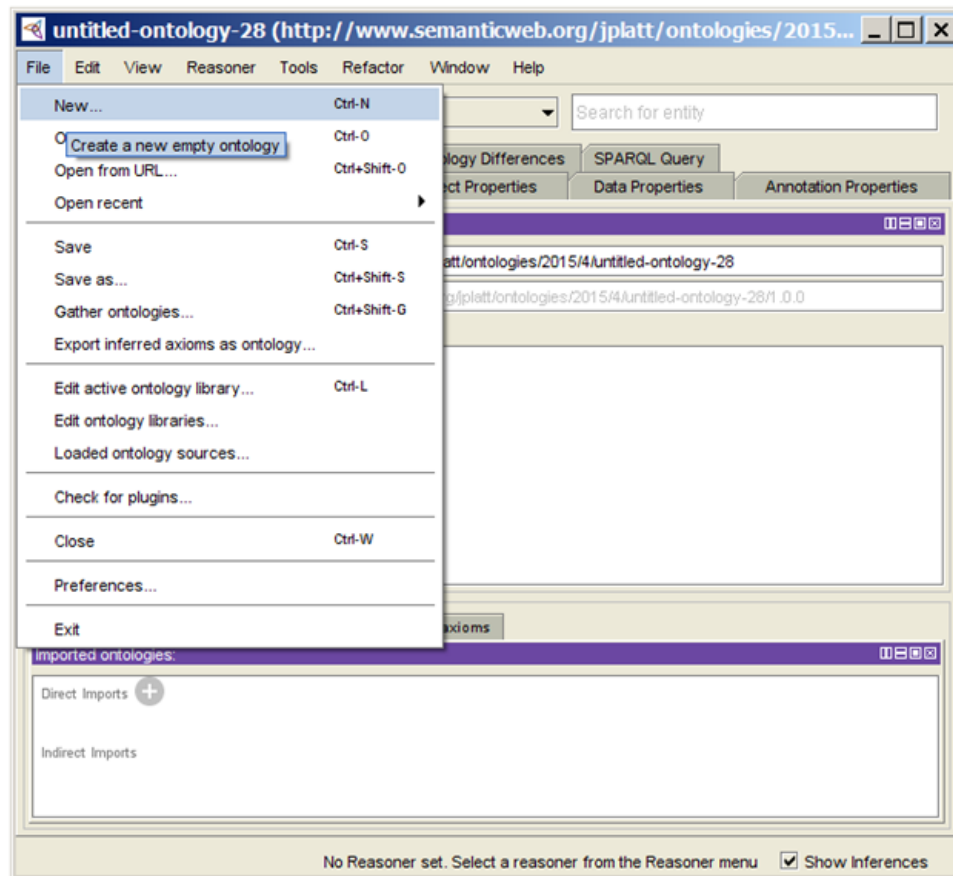


# Creating an XML catalog file

You can create an XML catalog file using the application **Protégé**<sup>[1]</sup>. The version of **Protégé** used in these instructions is version 4.3.0.

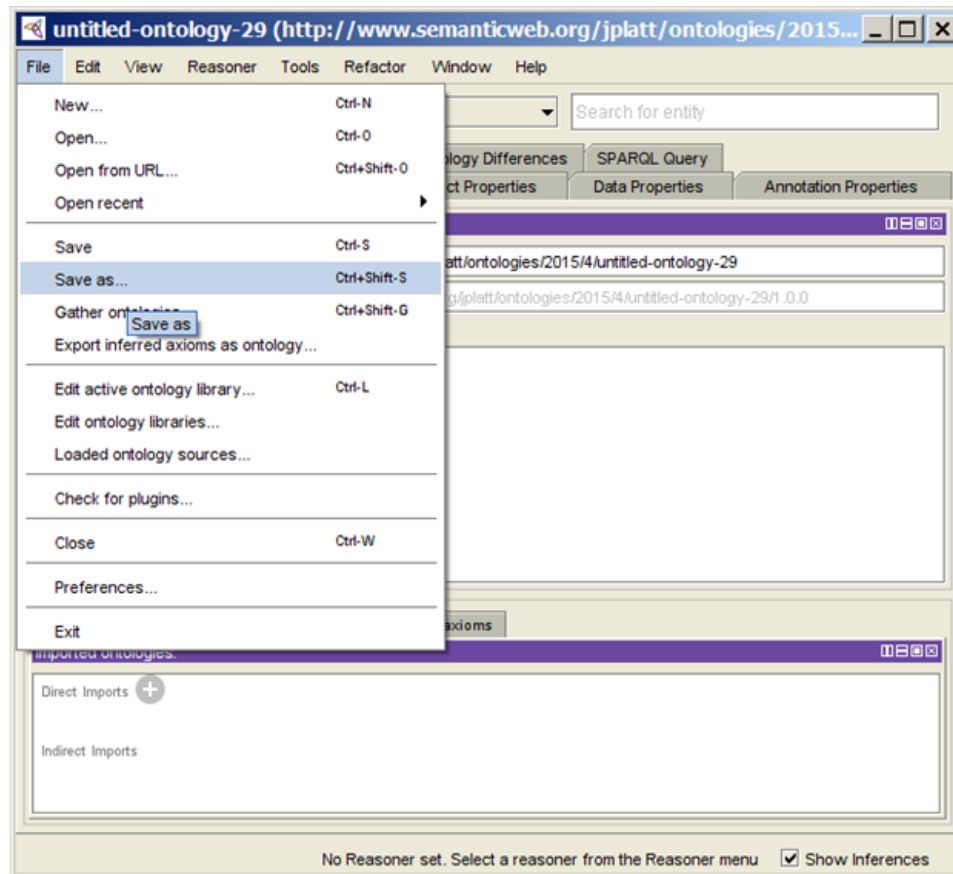
To create an XML catalog file for a locally cached set of external ontologies

1. Open **Protégé**.
2. Select **File > New**.



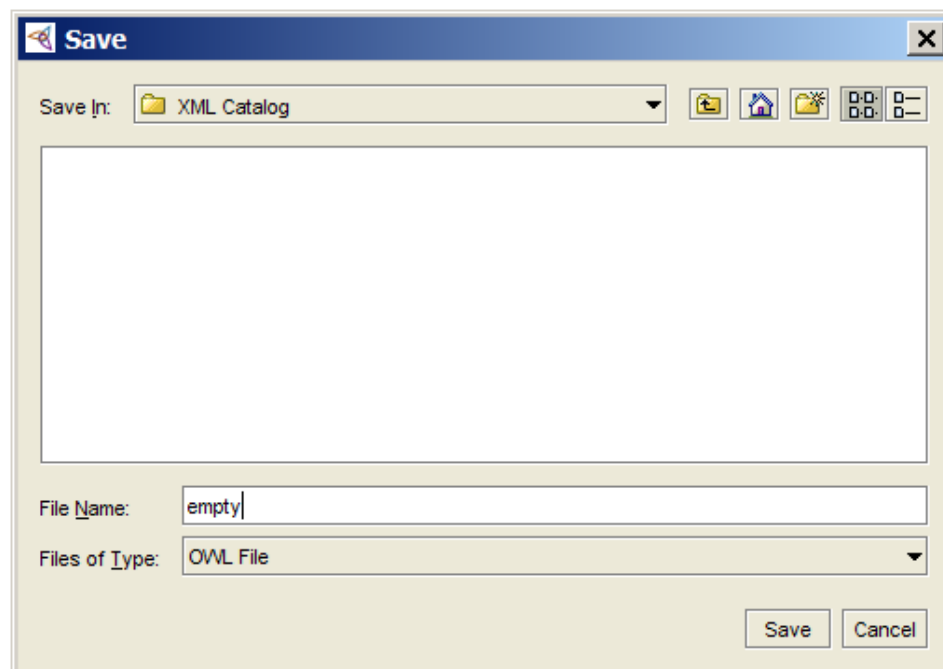
Creating an OWL ontology in Protégé application.

3. Select **Save as**.



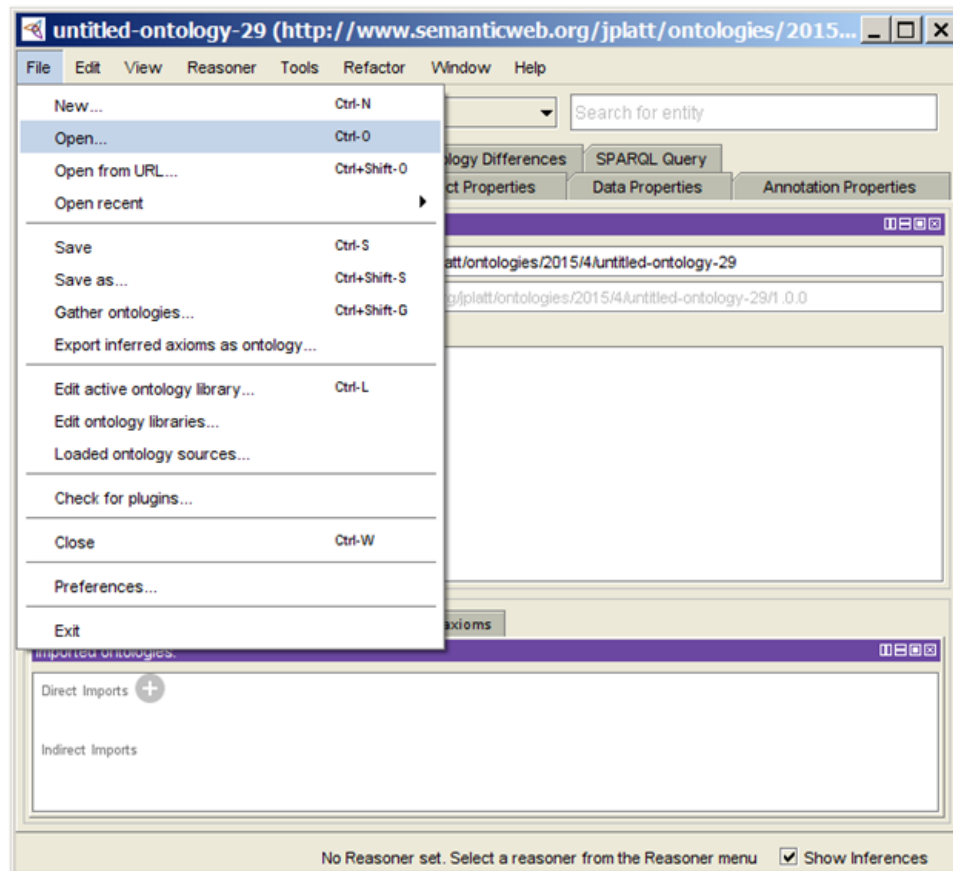
Saving an OWL ontology in Protégé.

4. Navigate to a folder location.
5. Name the empty ontology.
6. Click **Save**.



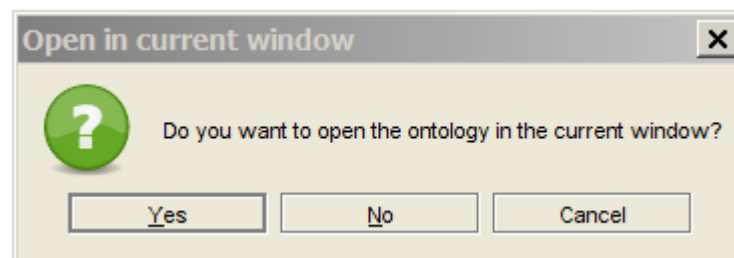
Saving the OWL ontology file to a selected location.

7. Click **File > Open**.



Opening the OWL ontology in Protégé.

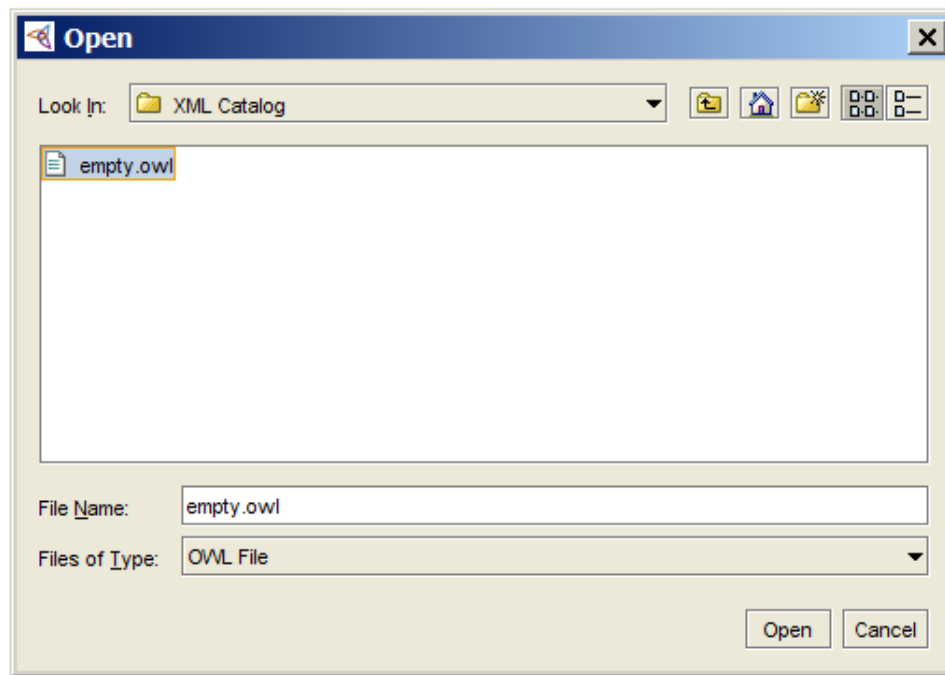
8. Click **Yes**.



Opening the OWL ontology in the current window option.

9. Select the newly created ontology.

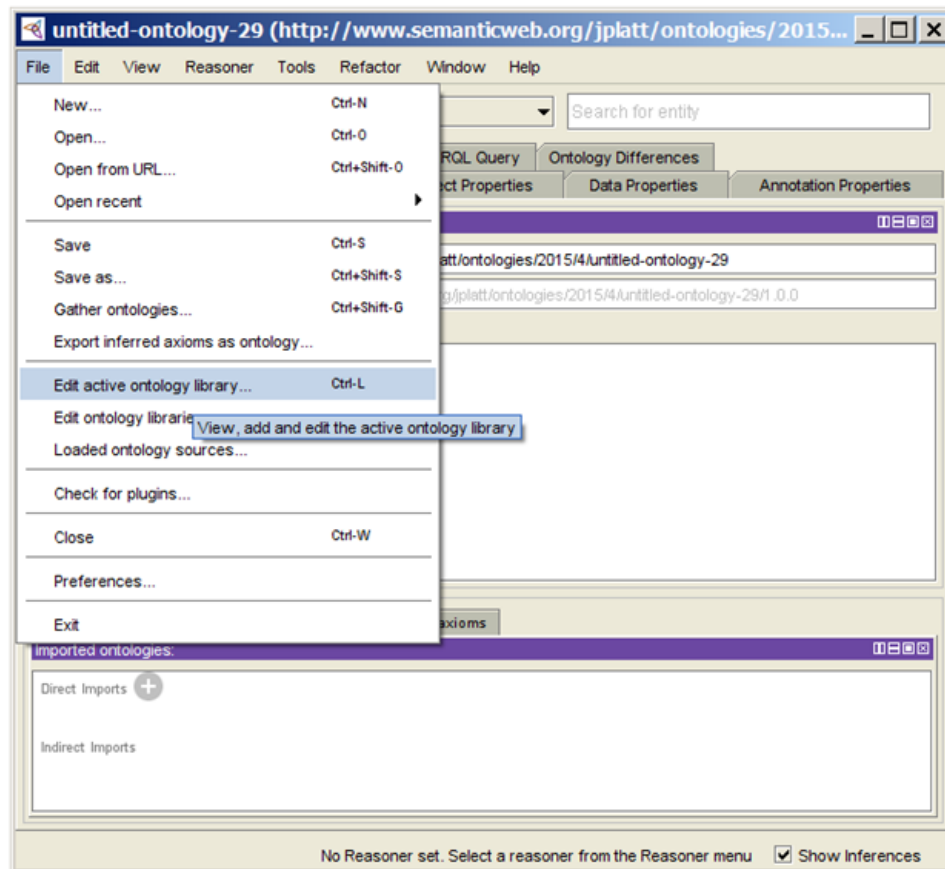
10. Click **Open**.



Selecting an OWL ontology to open.

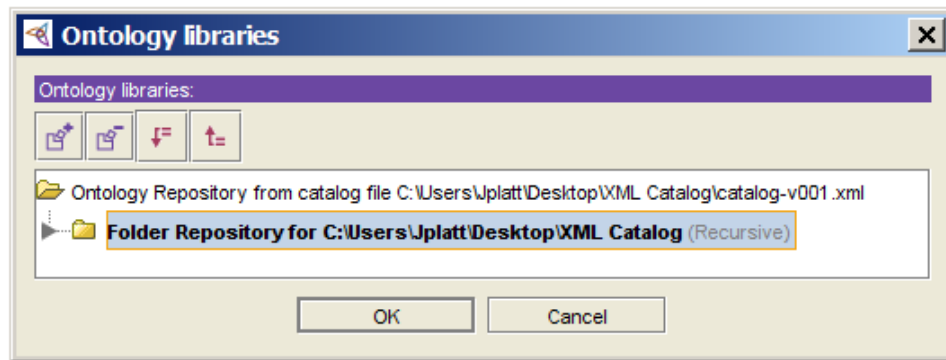
To create an XML catalog file for the desired locally cached set of external ontologies:

1. Click **File > Edit active ontology library**.



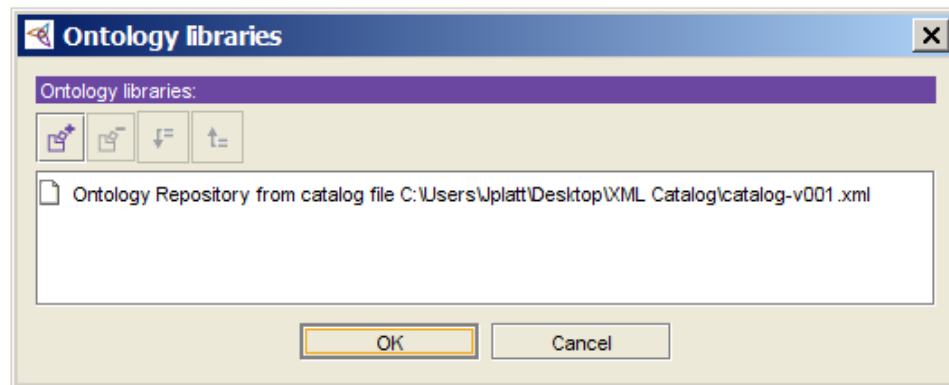
Creating an XML catalog file in Protégé.

2. Click on the **Folder Repository** for the empty ontology.
3. Click Delete (-).



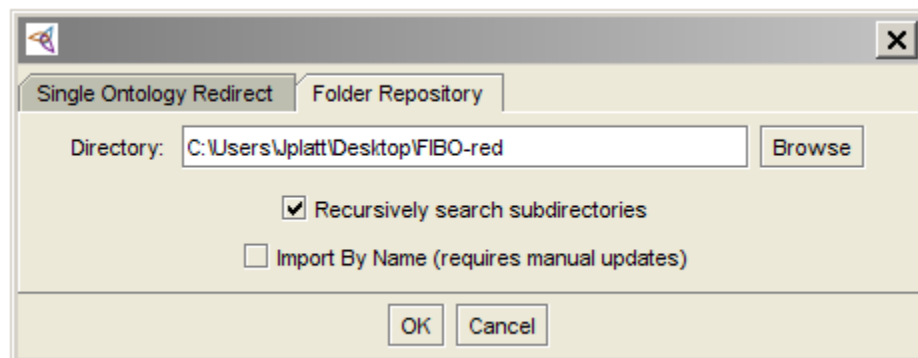
Deleting a folder repository.

4. Click Add (+).



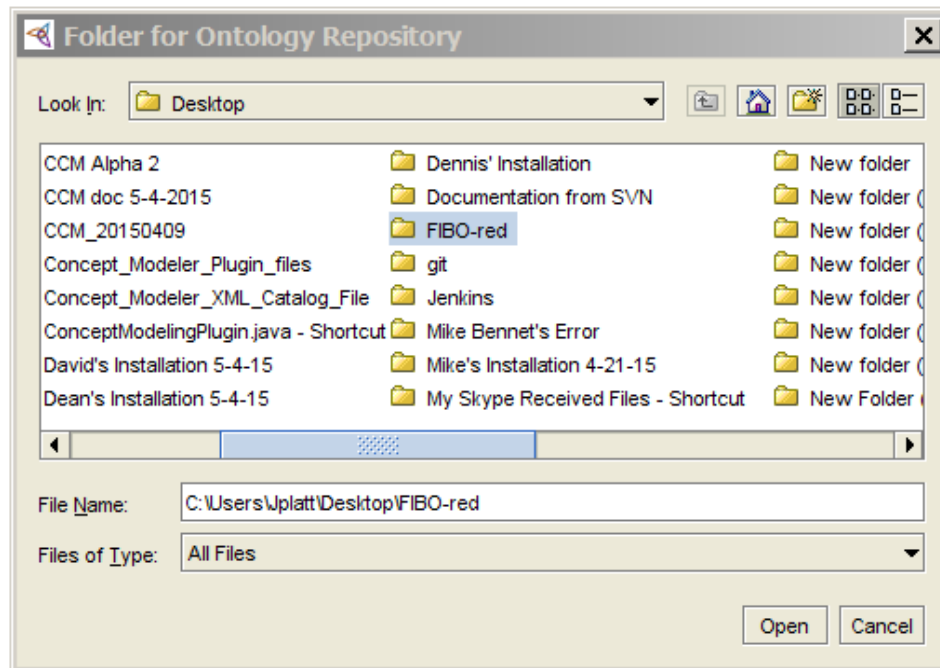
Adding a folder repository.

5. Click on **Folder Repository**.
6. Select **Recursively search subdirectories**.



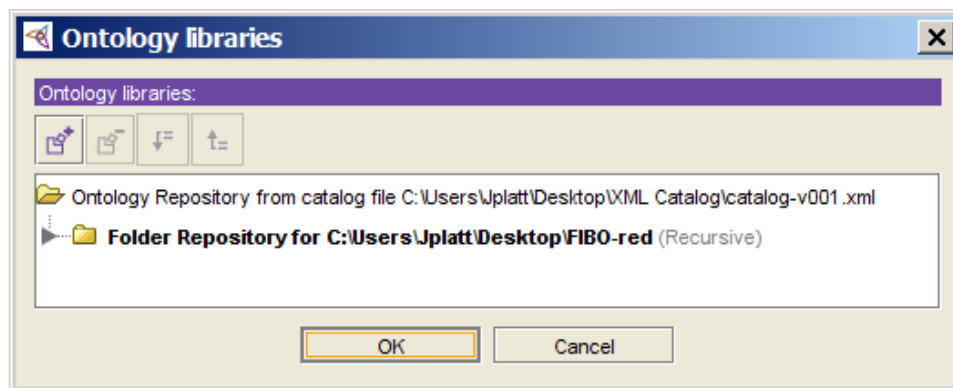
Locating for a folder repository.

7. Select the desired folder.
8. Click **Open**.



Selecting a folder repository.

9. Click **OK**.



The new folder repository is added.

[1] **Protégé** is a free, open-source ontology editor, and a framework for building knowledge management systems.

#### Related page

- [Usage](#)