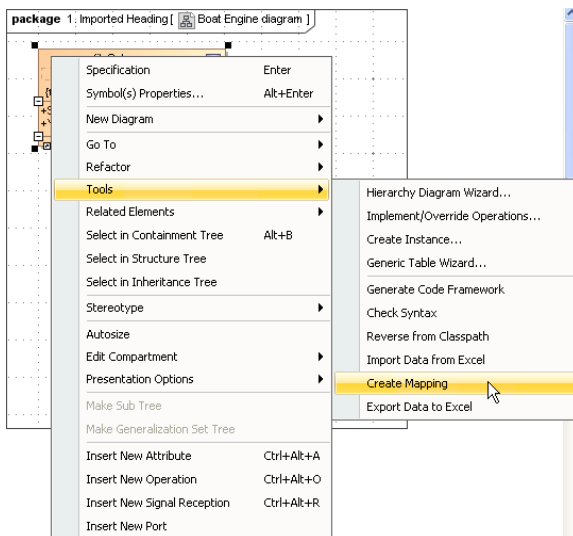
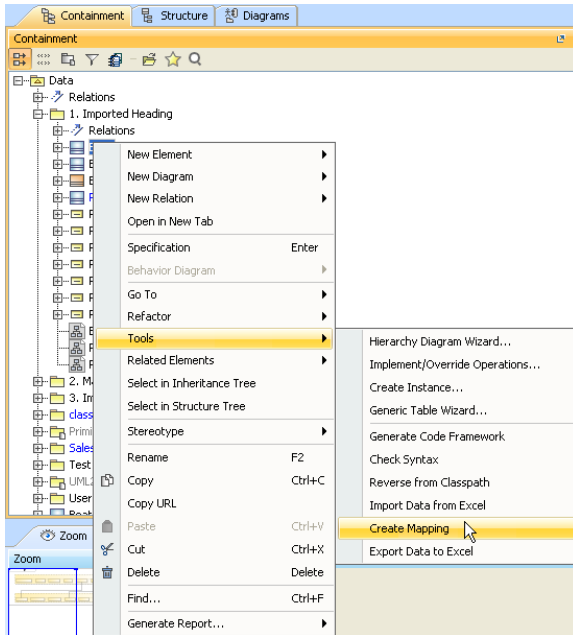


Creating a mapping diagram through the context menu

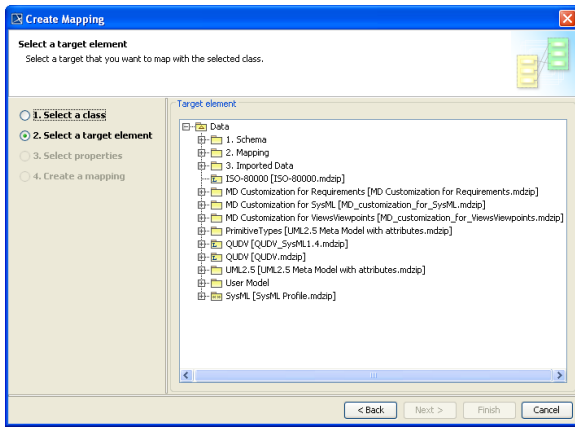
You can also map a schema class to an element by using the context menu of the schema class either in the Containment tree, see first figure below, or on the diagram pane, see second figure below, in MagicDraw, and create a mapping diagram.

To create a mapping diagram through the context menu

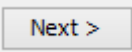
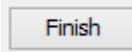
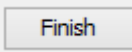
1. Right-click a schema class either (i) in the **Containment** tree, see first figure below, or (ii) on the diagram pane, see the second figure below.

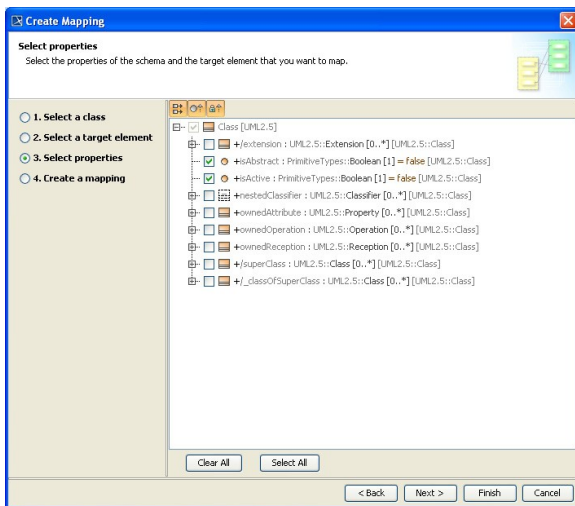


2. Select **Tools > Create Mapping**. The **Create Mapping** wizard will open and skip the **Select a class** step, see figure below.



3. Select a target element that you want to map with the selected schema class. The available target elements are *UML2.5 (UML2.5 meta modelwithattribute.mzip)* profile for *UML* element, *SysML* profile for *SysML* element, or your own model.

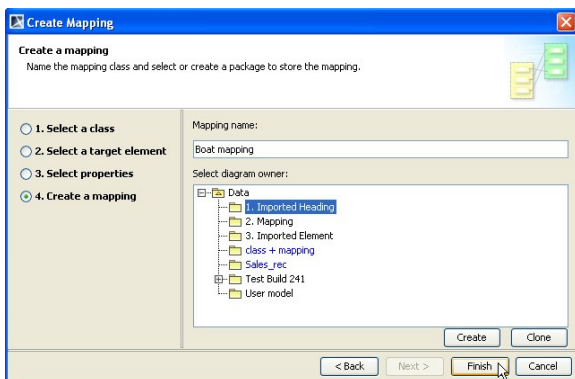
4. Click either (i)  or (ii) . If you click , skip steps 5-8.



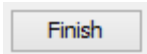
5. Select the properties of the target elements that you want to map to the schema class, see figure above.

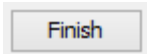
6. Click either (i)  to open the **Create a mapping** option page, see figure below or

- (ii)  to skip steps 7-8.



7. You can name the to-be-created class mapping in the **Mapping name** box and select a package to store the class mapping, see figure above.



8. Click . The class mapping will appear in the **Containment** tree and open on the diagram pane.