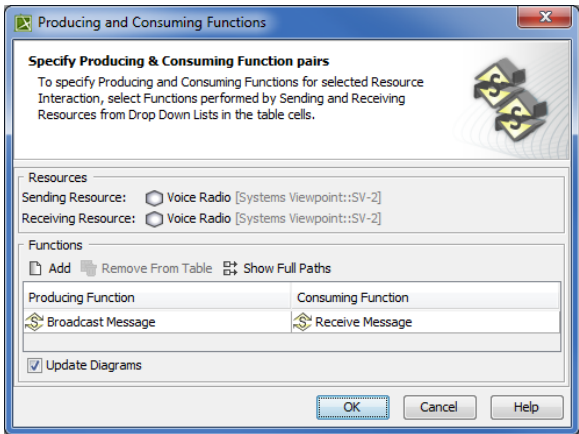


# Producing and Consuming Functions dialog

The **Producing and Consuming Functions** dialog allows you to specify or modify producing and consuming Functions for a selected Resource Interaction.



To open the **Producing and Consuming Functions** dialog

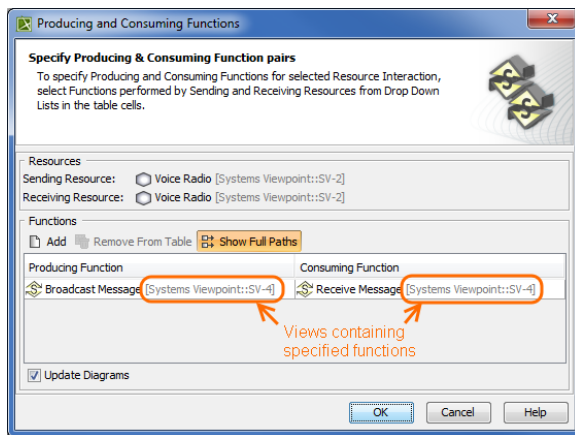
- In the Specification window of the Resource Interaction, click the **Edit (...)** button in the selected **Producing Function or Consuming Function** cell.
- In the SV-6 Systems Data Exchange Matrix, click the **Edit (...)** button in the selected **Producing Function or Consuming Function** cell.
- In the [Resource Interaction Manager dialog](#):
  - Click the **Edit (...)** button in the selected **Producing Function or Consuming Function** cell.
  - Click the **Functions** button.

The **Producing and Consuming Functions** dialog is embedded in the [Realized Resource Interaction wizard](#) as a step #2 .

Elements of the dialog are described in the following tables.



Box	Description
Update Diagrams	Select to update all related diagrams. Existing diagrams will be updated by displaying a particular resource interaction as a triangle on every Function Edge connecting producing and consuming function actions. If the specified Producing and Consuming Functions does not exist in any diagram, you will be suggested to create a new SV-4 System Functionality Description Flow (DoDAF), SV-4 Functionality Description Flow (MODAF), or NSV-4 System Functionality Description Flow (NAF) diagram. Producing and Consuming Function actions and the Resource Interaction will be represented in this new diagram.

Button	Description
Add	Click to add a new row for assigning a pair of Producing and Consuming Functions.
Remove From Table	Click to delete a selected Producing and Consuming Functions pair.
Show Full Paths	Click to show views containing specified functions (see the following figure).  Click once again to hide this information.



To specify a pair of producing and consuming functions

1. In the **Producing Function** column of a selected row, create a new value:
  - Click the drop-down arrow to open a list of available functions and select one.

 If you do not see the list of available functions, click  and select the **Performed Functions** button.

- Click the "..." button to create a new or select a function existing in the model. The **Select Function** dialog opens, wherein you are able to select or create functions.
2. Perform the same action described above for the **Consuming Function** column of the same row.

#### Related procedures

- [Filtering Operational Activities and Functions](#)
- [Realized Resource Interaction wizard](#)
- [Resource Interaction Manager dialog](#)