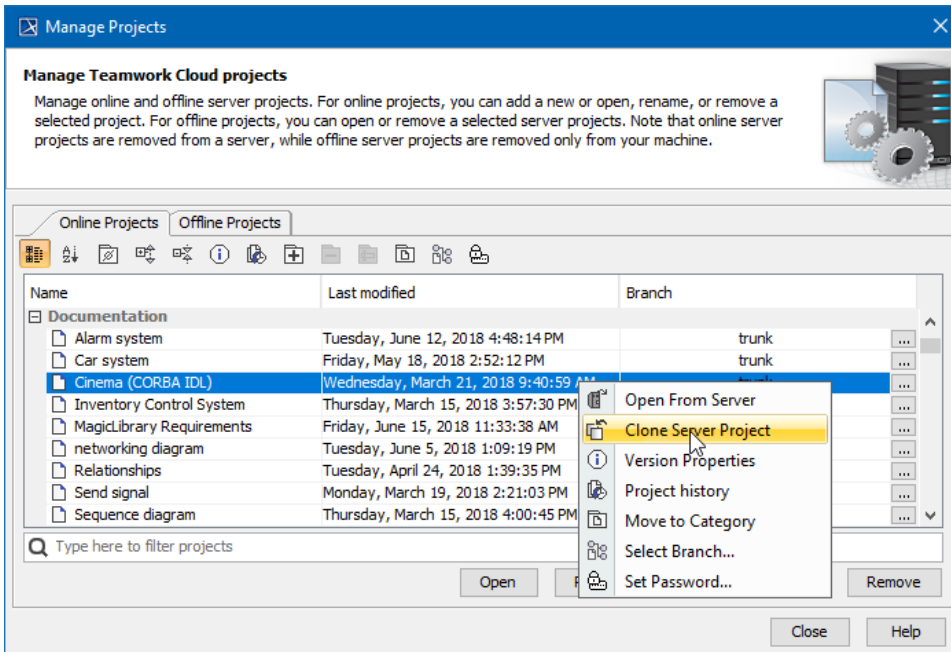



# Cloning projects

You can clone the latest version of your server project as a separate project. The project being cloned can be used as a "template" to create a new project or as an independent base for new development. IDs of a cloned project and elements are reset automatically. Project permissions are reset as well; the project is available only for a user who has cloned the project. All references to used projects (if there are any) are maintained.

To clone a project

1. On the main menu, click **Collaborate > Projects**. The **Manage Projects** dialog opens.
2. Select a project version you want to clone and do one of the following:
  - Click the **Clone** button.
  - Right-click the project and select **Clone Server Project**.



 You can use the search bar to faster filter used projects by name.

3. The **Clone Server Project** dialog opens, wherein you need to type a name of the cloned project, select a category to save the project and/or add a comment. Click **More**, if you want to add a tag for the project.
4. Click **Clone** when you are done.
5. Close the **Manage Projects** dialog.

## Related pages

- [Adding projects to Teamwork Cloud](#)