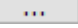
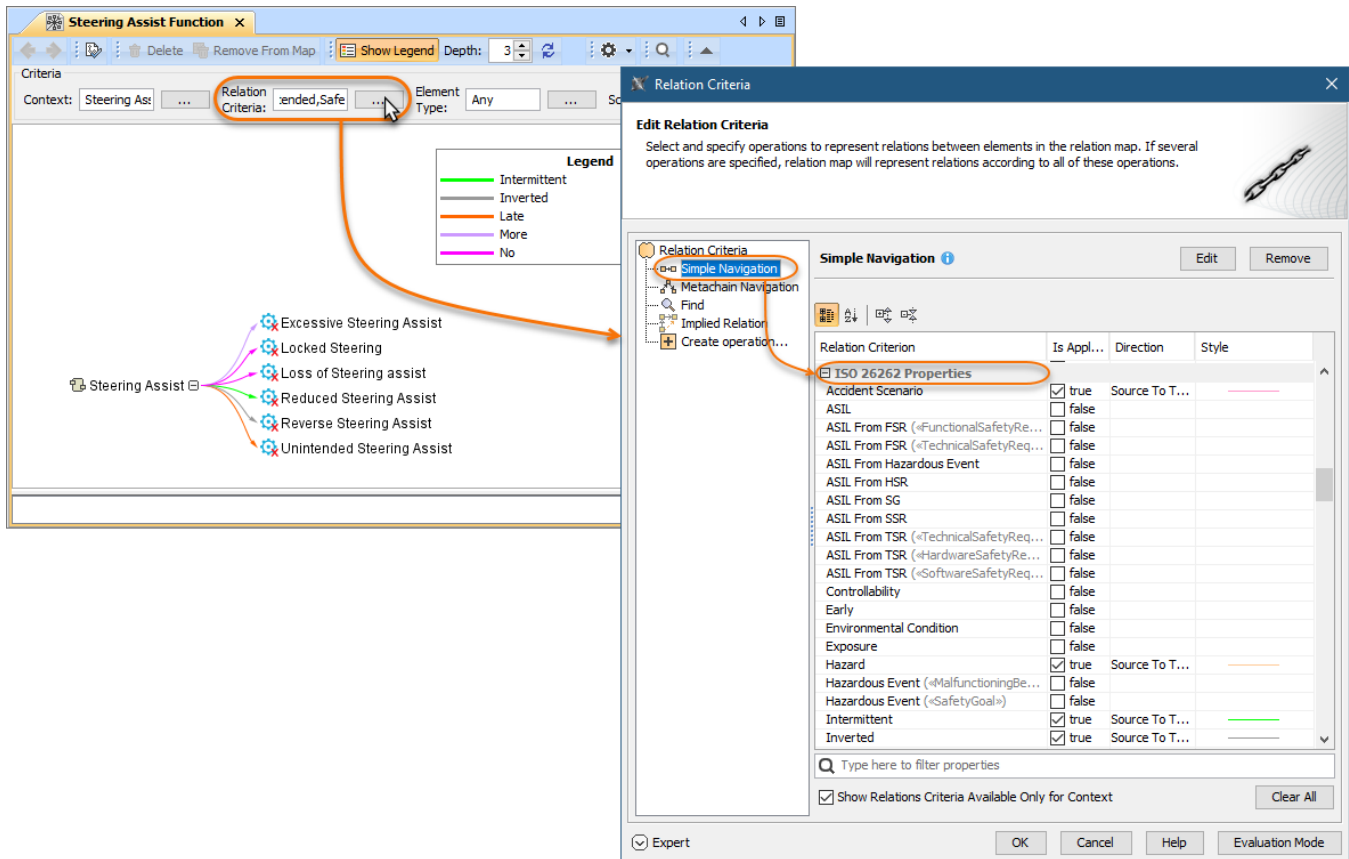


# Tracking ISO 26262 properties

You can track ISO 26262 properties in [Relation Maps](#). To do that, specify the relation criteria by using the [Simple Navigation operation](#) which allows you to select ISO 26262 properties.

To track ISO 26262 properties

1. [Create a Relation map](#).
2. In the **Criteria** area, [specify the context element](#) of the relation Map.
3. In the same area, click  next to the **Relation Criteria** box.
4. On the left side of the **Relation Criteria** dialog, select the Simple Navigation operation.
5. In the Simple Navigation operation specification area, select the ISO 26262 properties you want to track as displayed in the figure below.



Specifying relation criteria for a Relation map to track ISO 26262 properties.