

Operational Situations Table

On this page

- Creating Operational Situations Table
- Creating Operational Situations
- Defining Operational Situations

An Operational Situations Table allows you to define and manage various Operational Situations as a combination of Operational Conditions. The sections below explain how to create Operational Situations and how to assign the Exposure level, along with various Operational Conditions.

Operational Situations							
Criteria							
Element Type: OperationalSituation		Scope (optional): TypicalAutomotiveSituation		Filter:			
#	Name	Exposure	Vehicle Usage	Traffic And People	Location	Road Condition	Environmental Condition
1	TypicalAutomotiveSituation						
2	Normal driving in curve	E2	Driving at Speed	Traffic Free Flow	Highway City Roads	AnyRoadCondition	AnyEnvironmentalCondition
3	Highway driving straight at speed	E4	Steering Driving Straight Driving at Speed	AnyTrafficAndPeople	AnyLocation	AnyRoadCondition	AnyEnvironmentalCondition

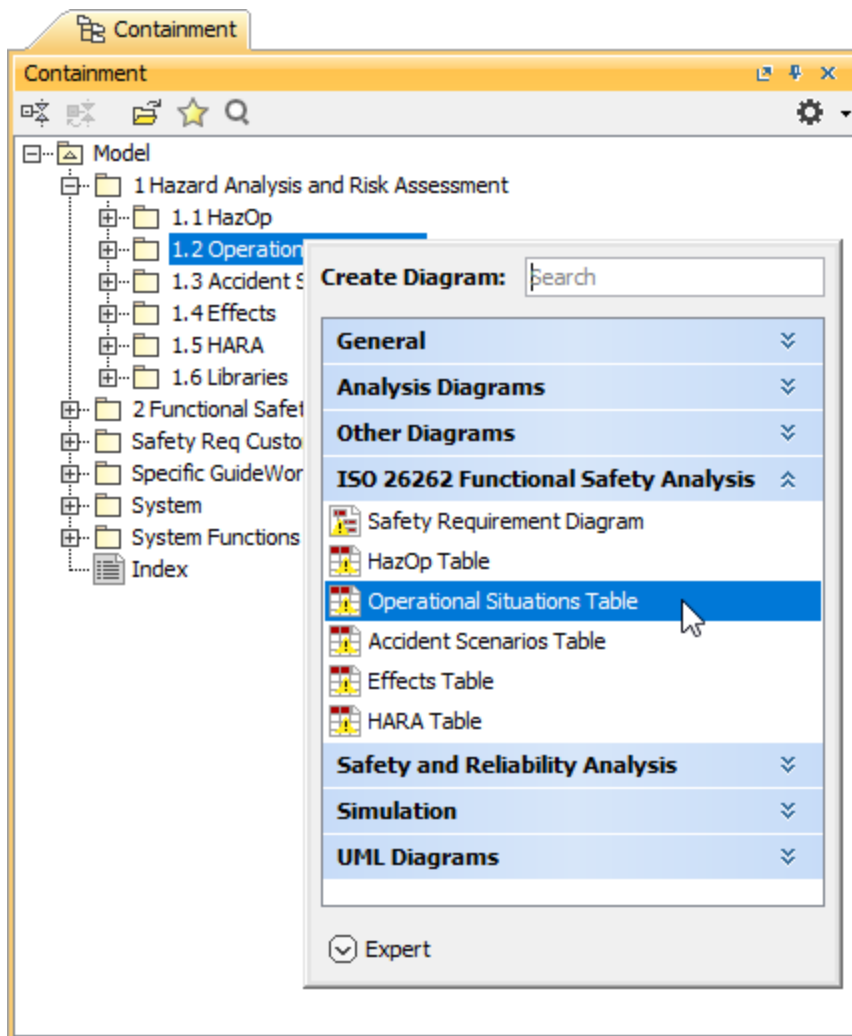
An example of an Operational Situations Table.

Creating Operational Situations Table

You can create an Operational Situations Table as described below.

To create an Operational Situations table

1. In the Containment tree, select the element that you want to be the owner of the table.
2. Do one of the following:
 - In the main menu, go to **Diagrams > Create Diagram**, then select **Operational Situations Table** in the open dialog.
 - In the Containment tree, right-click the owner of the table, select **Create Diagram**, and select **Operational Situations Table** in the open dialog.



3. When the table is created, type the name of the table and press Enter.

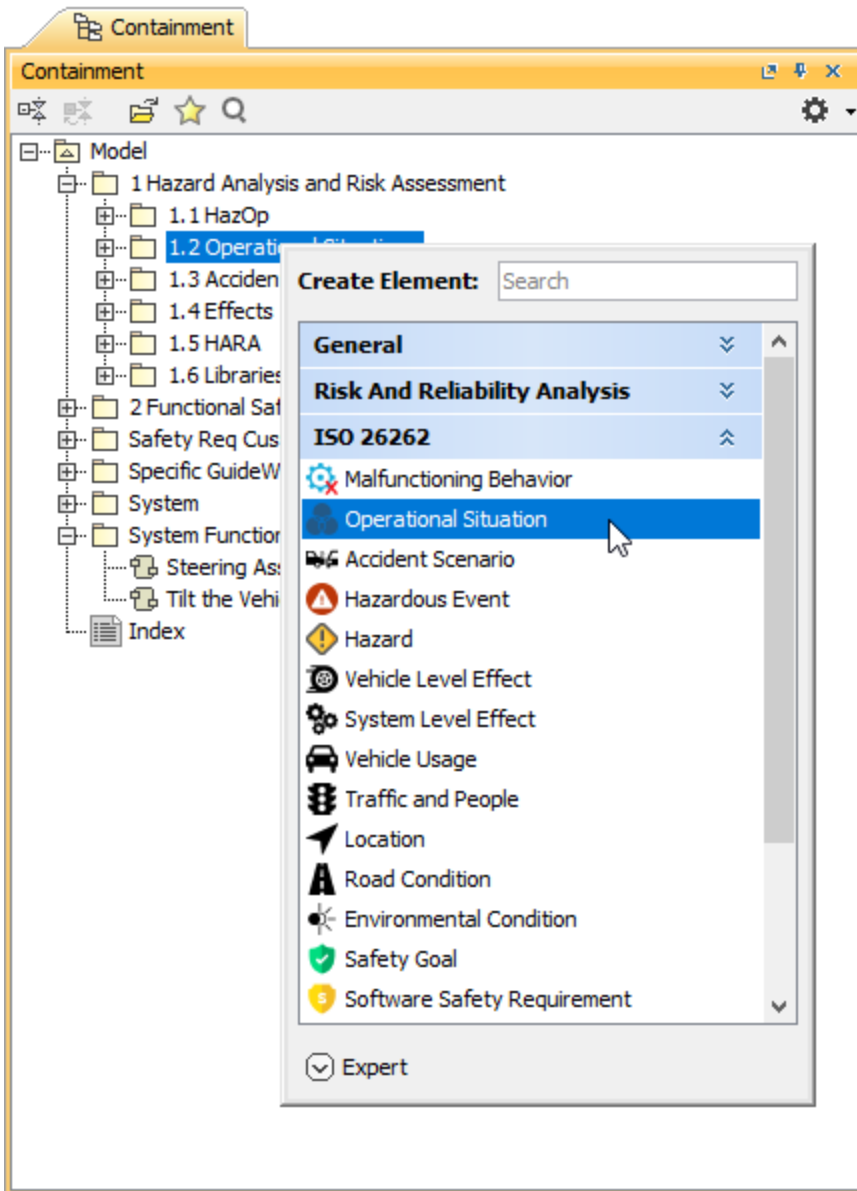
After following the above steps, an Operational Situations Table is created. The scope and element type of the table are already specified for you.

Creating Operational Situations

There are two ways to create an Operational Situation: you can do it right in an Operational Situations Table or in the Containment tree.

To create an Operational Situation in the Containment tree

1. In the Containment tree, right-click the owner of a new element and select **Create Element**.
2. In the open window, select **Operational Situation**.



3. When an Operational Situation is created, type the name of the element and press Enter.

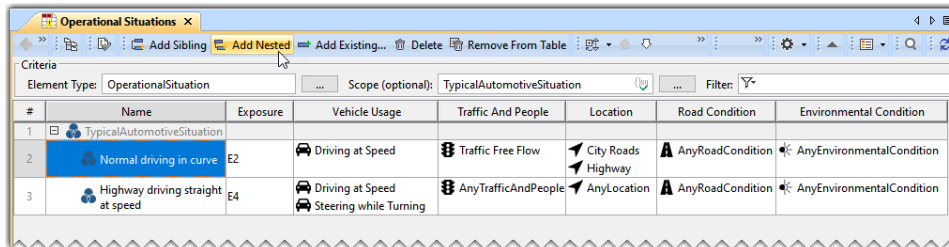
When you create an Operational Situation in the Containment tree, it is automatically added to an Operational Situations Table if it exists.

To create an Operational Situation in an Operational Situations Table

1. In an Operational Situations Table, select a table row.
2. Do one of the following:
 - In the table toolbar, click **Add Sibling** to create an element of the same level as the one you have selected.

Operational Situations							
Criteria							
Element Type: OperationalSituation		Scope (optional): TypicalAutomotiveSituation		Filter: Y			
#	Name	Exposure	Vehicle Usage	Traffic And People	Location	Road Condition	Environmental Condition
1	TypicalAutomotiveSituation						
2	Normal driving in curve	E2	Driving at Speed	Traffic Free Flow	City Roads Highway	AnyRoadCondition	AnyEnvironmentalCondition
3	Highway driving straight at speed	E4	Driving at Speed Steering while Turning	AnyTrafficAndPeople	AnyLocation	AnyRoadCondition	AnyEnvironmentalCondition

- In the table toolbar, click **Add Nested** to create an element nested under the selected element.



The screenshot shows the 'Operational Situations' window. The toolbar at the top includes buttons for 'Add Sibling', 'Add Nested', 'Add Existing...', 'Delete', and 'Remove From Table'. The 'Add Nested' button is highlighted. Below the toolbar is a table with the following data:

#	Name	Exposure	Vehicle Usage	Traffic And People	Location	Road Condition	Environmental Condition
1	TypicalAutomotiveSituation						
2	Normal driving in curve	E2	Driving at Speed	Traffic Free Flow	City Roads Highway	AnyRoadCondition	AnyEnvironmentalCondition
3	Highway driving straight at speed	E4	Driving at Speed Steering while Turning	AnyTrafficAndPeople	AnyLocation	AnyRoadCondition	AnyEnvironmentalCondition

3. Type the name of the new element and press Enter.

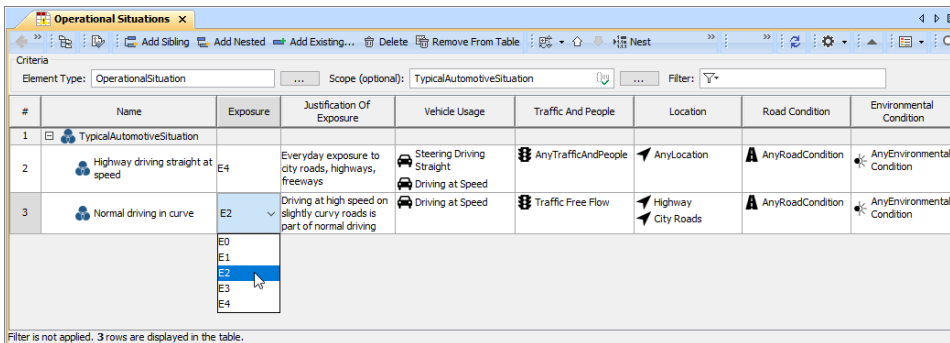
When you create an Operational Situation and add it to an Operational Situations Table, you need to define the element as described below.

Defining Operational Situations

After creating an Operational Situation, you need to define its Exposure level which allows you to estimate the probability of the vehicle being in a hazardous or risky situation. Also, you need to specify the Operational Conditions associated with the Operational Situation.

To define an Exposure level

1. In an Operational Situations Table, double-click the cell of the **Exposure** column and select the desired exposure level from the list.




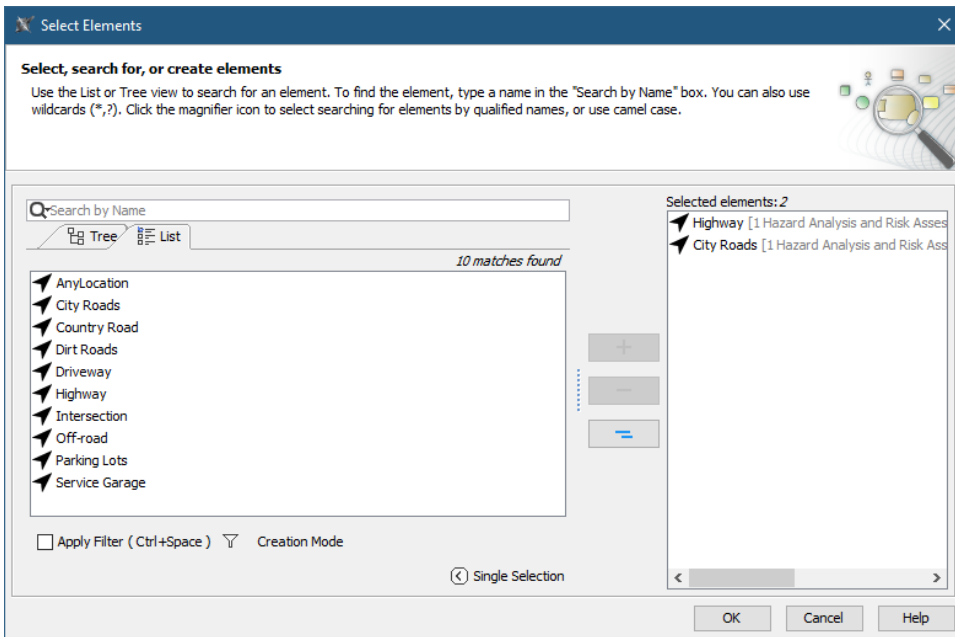
The screenshot shows the 'Operational Situations' window. The 'Exposure' column of the table is selected, and a dropdown menu is open, displaying the following options: E0, E1, E2, E3, and E4. The table data is as follows:

#	Name	Exposure	Justification Of Exposure	Vehicle Usage	Traffic And People	Location	Road Condition	Environmental Condition
1	TypicalAutomotiveSituation							
2	Highway driving straight at speed	E4	Everyday exposure to city roads, highways, freeways	Steering Driving Straight Driving at Speed	AnyTrafficAndPeople	AnyLocation	AnyRoadCondition	AnyEnvironmentalCondition
3	Normal driving in curve	E2	Driving at high speed on slightly curvy roads is part of normal driving	Driving at Speed	Traffic Free Flow	Highway City Roads	AnyRoadCondition	AnyEnvironmentalCondition

2. Double-click the **Justification of Exposure** cell and write the justification explaining the selected Exposure level.

To assign Operational Conditions

1. Double-click the cell of the column representing the desired Operational Condition group and click .
2. On the left side of the **Select Elements** dialog, open the **List** tab.
3. Double-click the Operational Conditions you want to assign. The elements should be added to the selected elements area on the right side of the dialog.



4. Click **OK**.
5. Repeat the steps from 1 to 4 to assign the Operational Conditions of other groups.

You can also drag and drop the Operational Conditions from the Containment tree to the Operational Situations Table.

