


# Predefined validation suites

## On this page

- [Introduction](#)
- [Limiting the scope of the constraints to be validated against](#)
- [Customizing validation options](#)


## Introduction

You can validate your model against a set of constraints called validation suites. You must perform the validation manually to check your model against the predefined validation suites. The predefined validation suites have the «validationSuite» stereotype applied.

 Each Profile contains its own validation suites. You can [create your own validation suites](#).


The following predefined validation suites appear in the [Validation dialog](#) or [Validation Suites dialog](#):

- **Composition Integrity** contains validation rules that check the structure of the project, such as recovered elements, references, versions of project usages, etc.
- **Project Integrity Correctness** contains validation rules that check cyclical dependencies between current project and used projects.
- **Spelling** contains validation rules that check the spelling of properties and tagged values.
- **Text References Validation** contains validation rules that check if the hyperlink text and the referenced element are coherent.
- **UML completeness constraints** contains validation rules that check if the model is complete, that there are no gaps, and the essential information fields in the elements have been filled in (e.g. checks that all the properties have type specified etc.).
- **UML correctness constraints** contains validation rules that check if the model is correct, that related information is consistent across the model (e.g. the multiplicity between elements coincides between their instances).

 You can find predefined validation suites in the [Containment tree](#) when the **Show Auxiliary Resources** option is enabled, expand the *UML Standard Profile Package* > *Validation Profile Package*.

To show the auxiliary resources  
[Learn how to start the validation >>](#)

## Limiting the scope of the constraints to be validated against

- In the [Model Browser](#), click  and enable the **Show Auxiliary Resources** option.

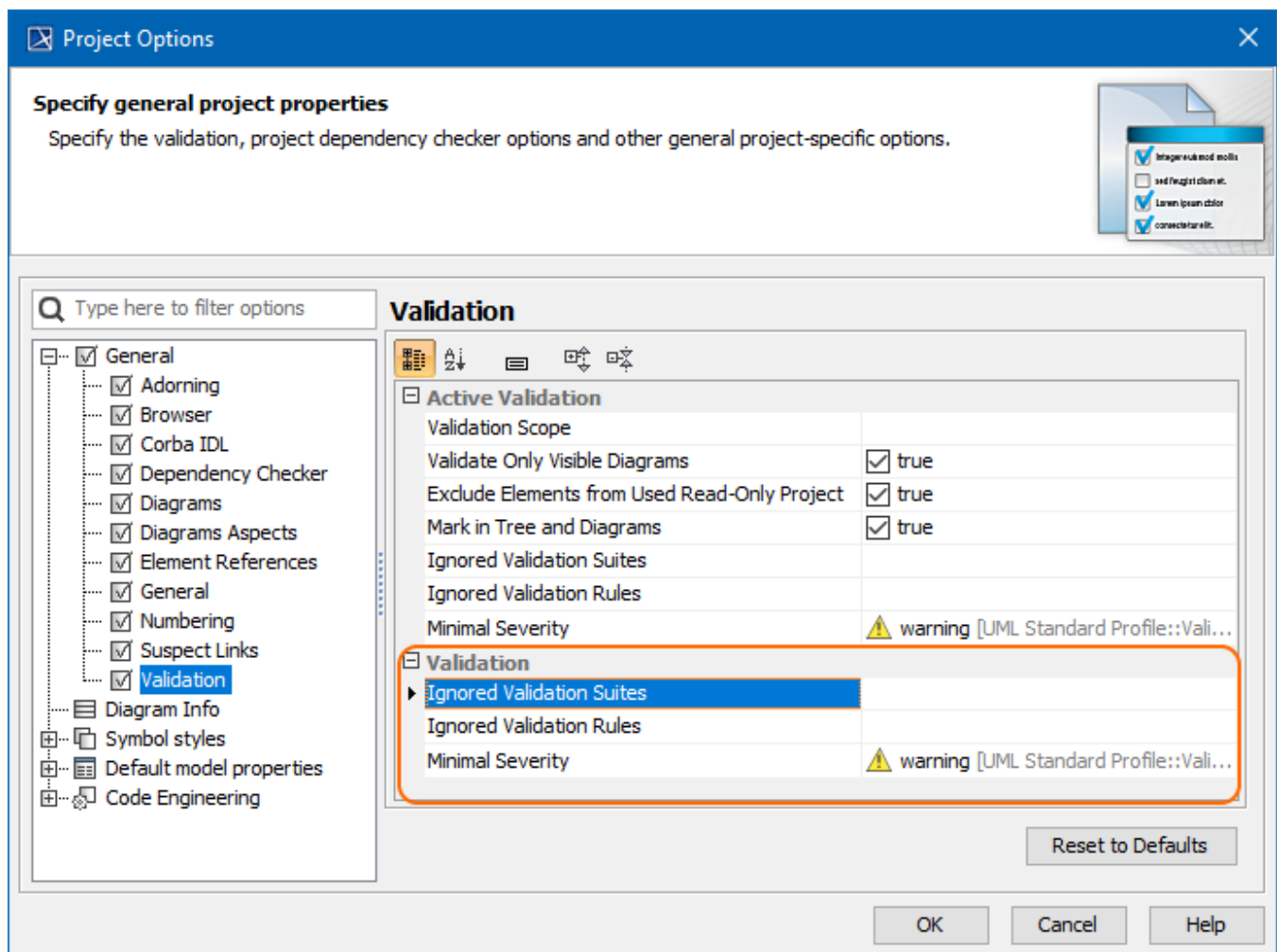
If you select the **All Validation Suites** as the **Validation Suite** in the [Validation dialog](#), your model is validated against all validation suites. To limit the scope of the constraints to be validated against, you can select a more specific validation suite, such as **Numbering Validation**. The model or its part is validated against the selected validation suite. The [Validation Results panel](#) shows the results, listing all elements that do not conform to constraints in the selected validation suite. These elements are called "invalid" elements and are highlighted.

## Customizing validation options

You can customize the Validation options in the **Project Options** dialog.

To open the Validation options

1. Open the **Project Options** dialog in one of the following ways:
  - On the main menu, select **Analyze > Validation > Validation Options**.
  - On the main menu, select **Options > Project**. In the [Project Options](#) dialog, select **General > Validation**.
2. Specify the options you need in the **Validation** area. [How to use the Project Options dialog >>](#)
3. Click **OK**.



Validation options in the **Project Options** dialog.

#### Related pages

- [MagicDraw active validation suites](#)
- [SysML validation suites](#)
- [SysML active validation suites](#)
- [Requirements validation suites](#)