

# Starting a collaboration session



Before logging in to any server, you must:

- Have a user account on the server.
- Be sure the server is running.

To log in to a server

1. From the **Collaborate** menu, select **Login**. The **Login** dialog opens.
2. Log in to a server.

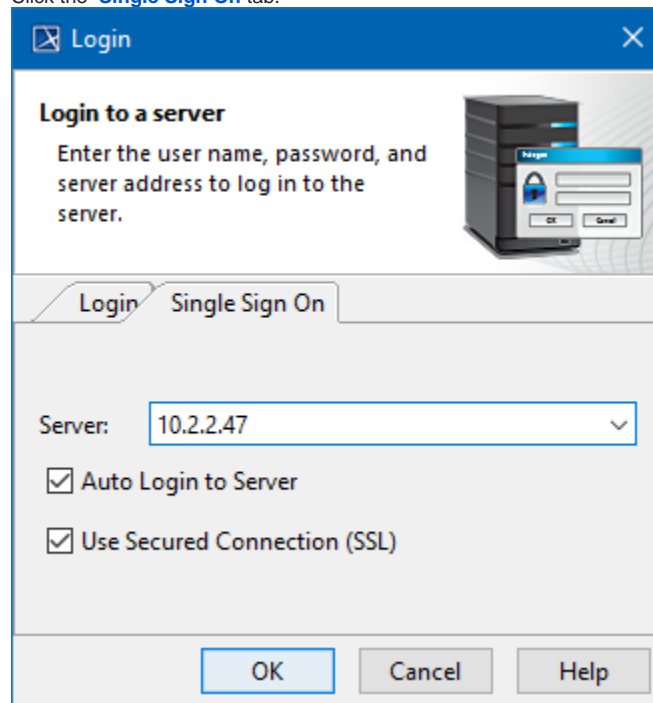


If you have [set up an LDAP connection](#) and imported users from LDAP using Teamwork Cloud Admin, you can use either internal or imported users to log in to Teamwork Cloud.

- To login using "username/password" authentication:
  - i. Click the **Login** tab.
  - ii. Type your user name and password.

- For users having a single ID and password for multiple software systems (valid only for Teamwork Cloud Server):

- i. Click the **Single Sign On** tab.



3. Provide the server name (address). If you need to specify a server port, type `< server name> : <port number>` , for example `10.2.2.47:3579` .

**i** If you prefer to have only a Single Sign On login option, you can enable it by adding an argument to the properties file of the modeling tool:

- a. Go to `<modeling tool installation directory>/bin` and open the properties file of your modeling tool.
- b. In the `JAVA_ARGS` line, add the `-Dhide.login.tab=true` argument.

```
MAIN_CLASS=com.nomagic.magicdraw.Main
CONSOLE=false
APP_ARGS=
JAVA_HOME=C:\Program Files\MagicDraw\jre
JAVA_ARGS=-Dhide.login.tab=true -XX\:+IgnoreUnr
MAC_JAVA_ARGS=-Xdock\name\=MagicDraw -Xdock\i
CLASSPATH=lib/patch.jar\lib/brand.jar\lib/bra
```

4. If you want the client application to remember your credentials and automatically log in to the server next time upon starting the client application, select the **Auto Login to Server** check box.
5. If you need to connect to the server using the SSL connection, select the **Use Secured Connection (SSL)** check box.

**i** The SSL connection must be established on both the server and the client side.

6. Click **OK**.
7. Wait while you are connected to the server, and then you can start performing collaborative tasks.

To log out of the server

- From the **Collaborate** menu, select **Logout**.