

19.0 LTR SP3 Version News

The logo for CAMEO SIMULATION TOOLKIT. The word "CAMEO" is in a large, blue, serif font, with a stylized profile of a person's head inside the letter 'C'. Below "CAMEO" is a horizontal line. Underneath the line, the words "SIMULATION TOOLKIT" are written in a smaller, blue, serif font, followed by a trademark symbol (TM).

Released on: November 21, 2019

This release comes with a new Trade Study modeling pattern and engine which automatically evaluates all permutations of parametric and design alternatives from model or Excel spreadsheets and finds the single best configuration that satisfies all requirements and scores the best overall value.

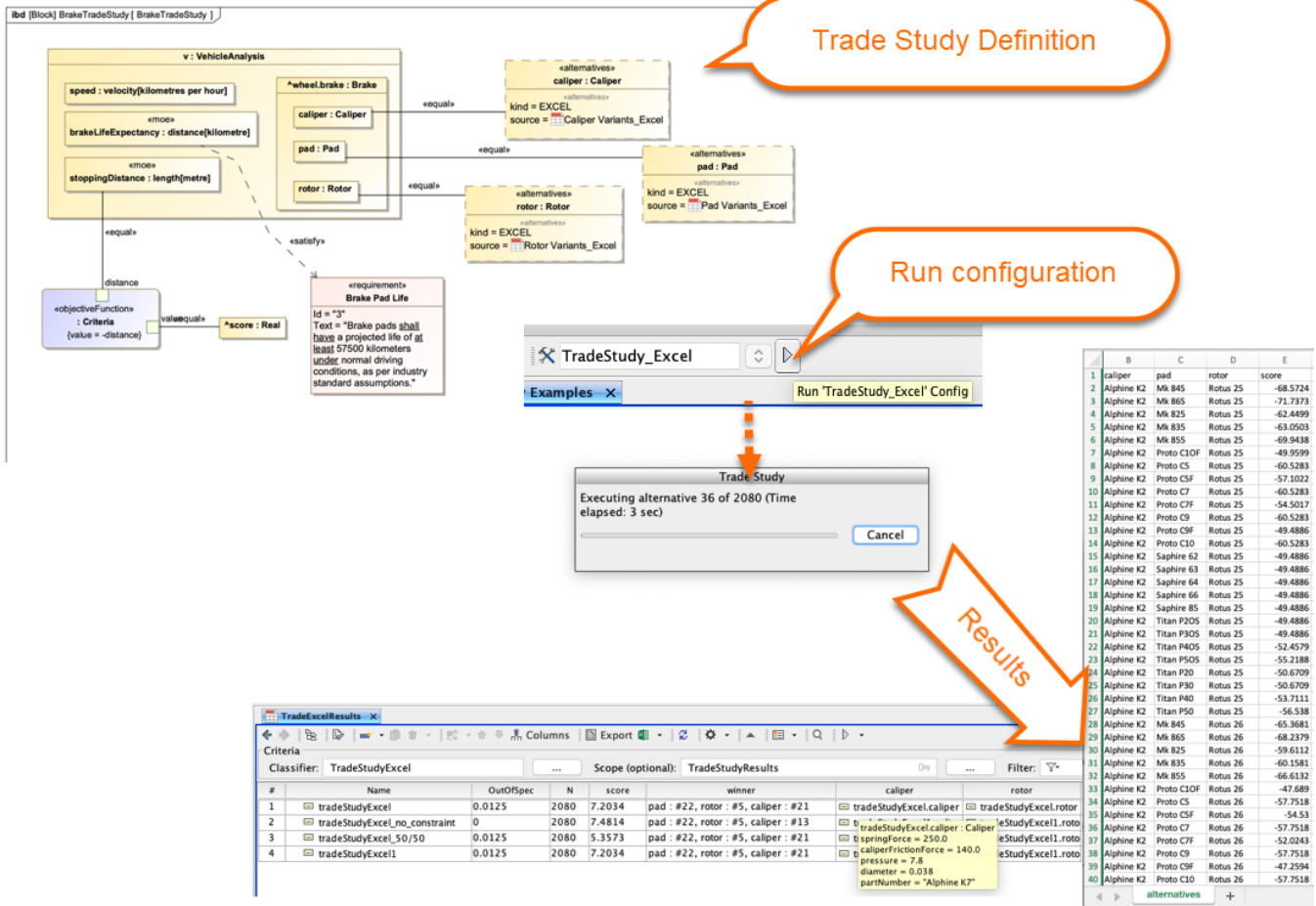
CST also adds a capability to co-simulate Simulink models imported and represented as blackbox <<SimulinkBlocks>>.

And please don't forget to give us your feedback on [LinkedIn](#), [Twitter](#) or [Facebook](#).

- [Trade Studies](#)
- [Simulink import and co-simulation](#)
- [Value flow animation](#)
- [Other improvements](#)

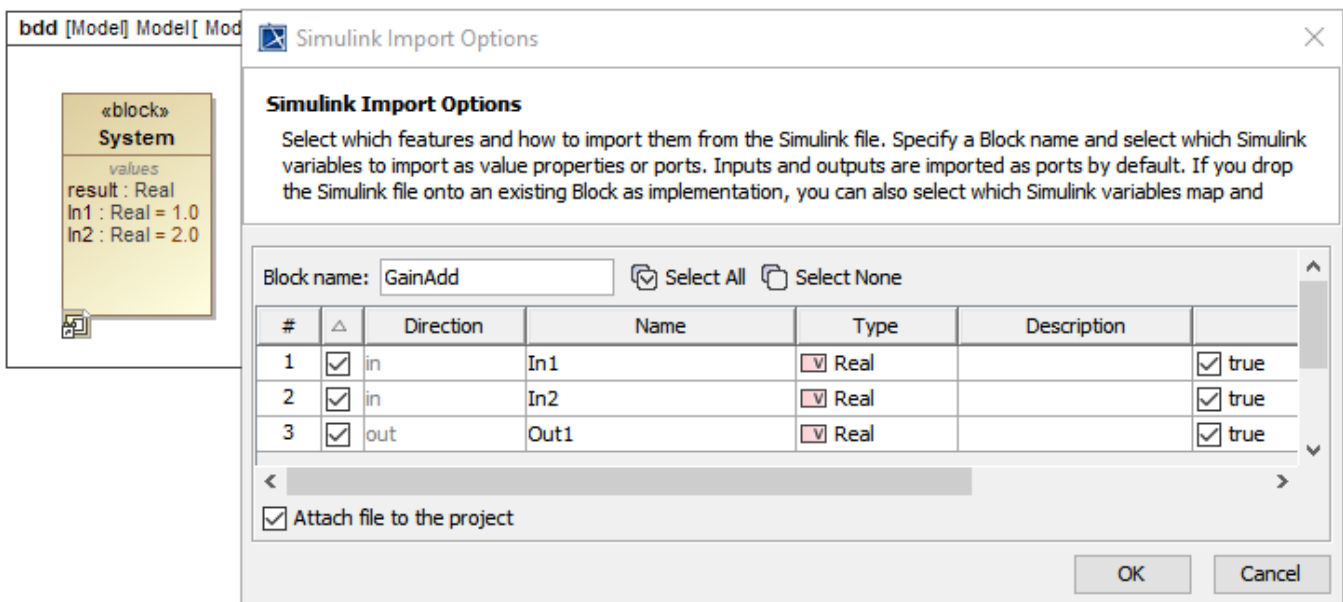
Trade Studies

19.0 SP3 comes with a new Trade Study modeling pattern and engine which automatically evaluates all permutations of parametric and design alternatives from the model or Excel spreadsheets and finds a single best configuration which satisfies all requirements and scores the best overall value.



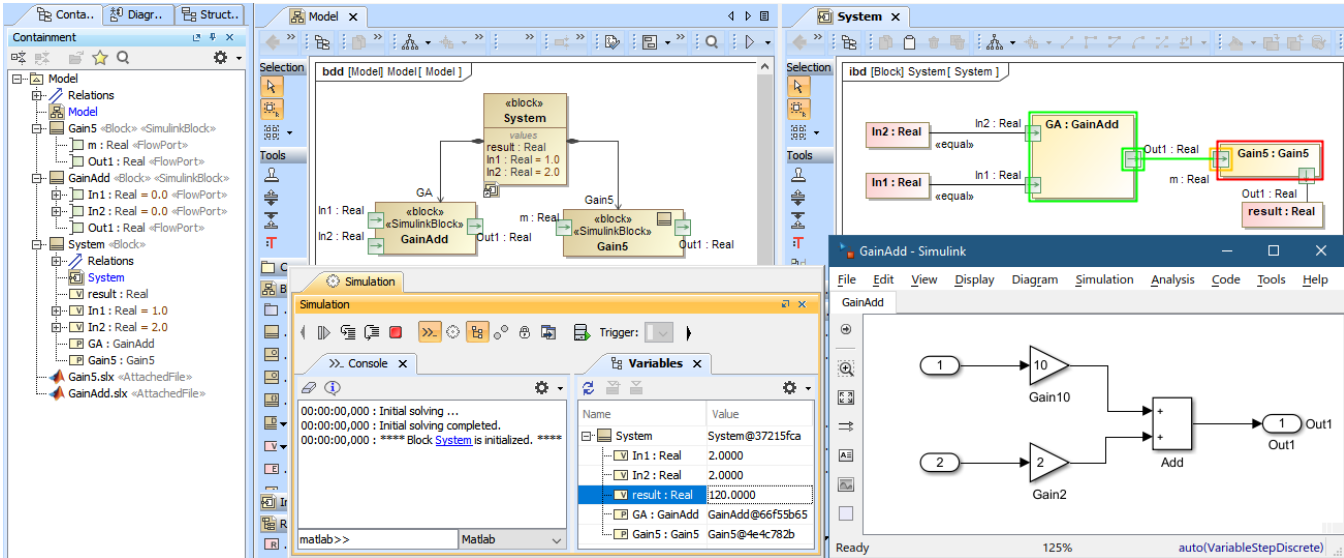
Simulink import and co-simulation

Drag a Simulink file (in a `.slx` or `.mdl` formats) into the Block Definition diagram or Internal Block diagram of the project. The **Simulink Import Options** dialog will be shown as in the figure below. All input/output Ports are selected by default.



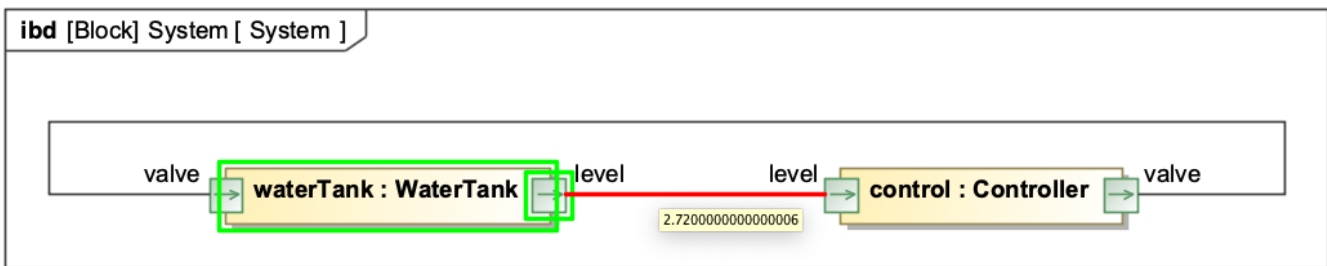
The Simulink Import Options dialog is shown after dragging a Simulink model into the Block Definition diagram or Internal Block diagram of the project.

Attach imported <<SimulinkBlock>> inputs and outputs to other blocks or value properties in IBD for co-simulation.



Value flow animation

Flow or value property change propagation among connectors between blocks is now animated in IBD diagrams for the user convenience.



Other improvements

- A new option for custom Web Server port number
- Contextualized guards evaluation inside swimlanes
- "and", "or", "not" and "xor" Boolean operators support in built-in math engine
- CSV export for parts
- Command line and text file manipulation utilities in Simulation Profile library
- Flow port direction semantics
- Multiple small bugfixes

i You can check [the list](#) of publicly available issues or your own reported issues fixed in Cameo Simulation Toolkit 19.0 SP3.
Note: You will be required to login. Use the same username and password as for www.nomagic.com.