


# Obtaining a floating license for a modeling tool

## Prerequisites


- The FlexNet floating license server is [installed](#) and started.
- You have the floating license server name and port (provided by your system administrator).

## Procedure

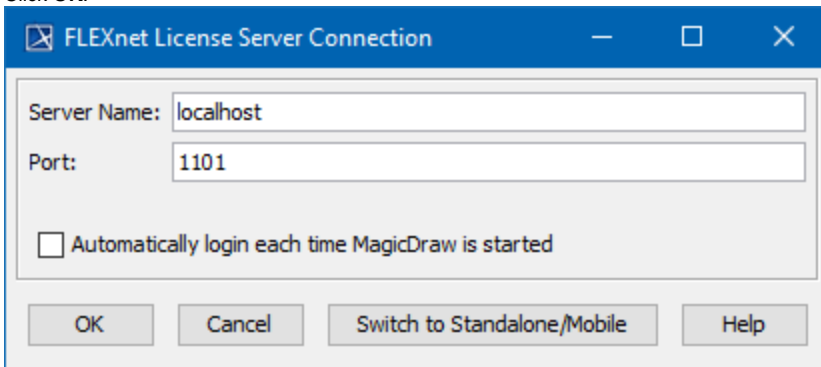
1. Start the modeling tool.
2. When the **License Manager** dialog opens, click the **Use Floating License** button.


 To open this dialog manually, select **Help > License Manager**.

3. In the **Registration** dialog, fill in the registration form with your personal details, click **Register**.

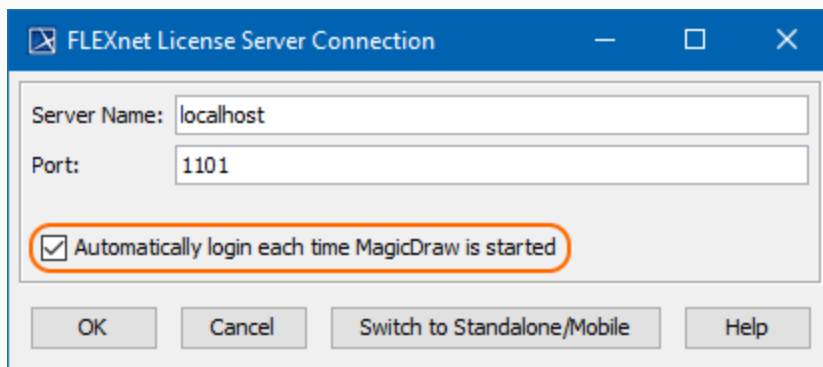
 Registration is mandatory for all the users of the floating license! You will be asked to register a product when you opt to obtain the floating license for the first time.

4. In the **FLEXnet License Server Connection** dialog, enter the floating license server name and port (provided by your system administrator). Click **OK**.



 If the **Automatically login each time <modeling tool> is started** checkbox is selected, the **FlexNet License Server Connection** dialog will not be displayed and the licenses will be obtained automatically. To reset the licenses or select additional ones, do the following:

- a. In the main menu, click **Options > Environment**. The **Environment Options** dialog opens.
- b. In the **Floating** options group, set the **Auto login to FlexNet License Server** option to *false*.
- c. Restart the modeling tool.



5. In the **Select Edition/Plugin** dialog, select the modeling tool edition, plugins you want to use, and the floating license connection type: online or offline ([borrowing](#)). Click **OK**.

Select Edition/Plugin

Edition

Architect (0 of 50 licenses are in use)

Enterprise (23 of 50 licenses are in use)

Professional C# (0 of 50 licenses are in use)

Professional C++ (0 of 50 licenses are in use)

Professional Java (0 of 50 licenses are in use)

Standard (2 of 50 licenses are in use)

Plugins

Cameo Requirements Modeler (20 of 100 licenses are in use)

Project Merge (55 of 100 licenses are in use)

SysML (20 of 100 licenses are in use)

Remember plugin selection for the next time

Refresh Used Licenses

Connection

Online

Offline

Borrow period in hours (1 - 1 440):

OK Cancel Help



To obtain a floating license for your plugin, you must install it in your modeling tool first. Once the plugin is installed, you will find it listed under **Plugins** in the **Select Edition/Plugin** window. [Click here to learn how to install a plugin.](#)



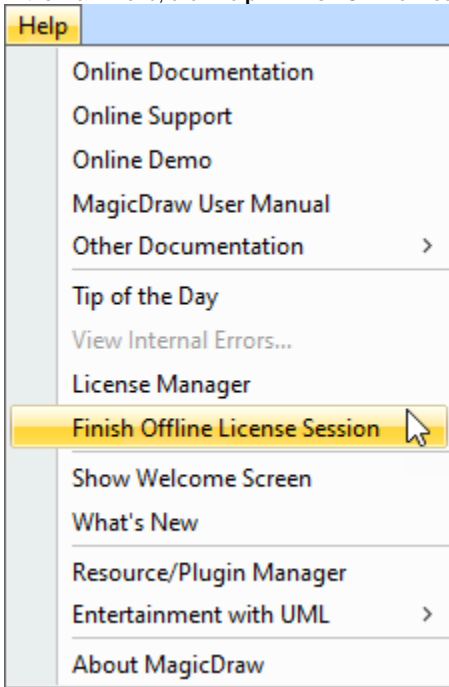
To check the license information, select **Help > About** and click the **Licensing** tab.

## Finishing offline floating license session

To finish an offline floating license session earlier

---

1. In the main menu, click **Help > Finish Offline License Session**.



2. Click **Yes**.