

C++ Code Engineering

References

- <https://isocpp.org/std/the-standard>
- [ECMA-372 C++/CLI Language Specification](#)

Demo

C++ Code Engineering

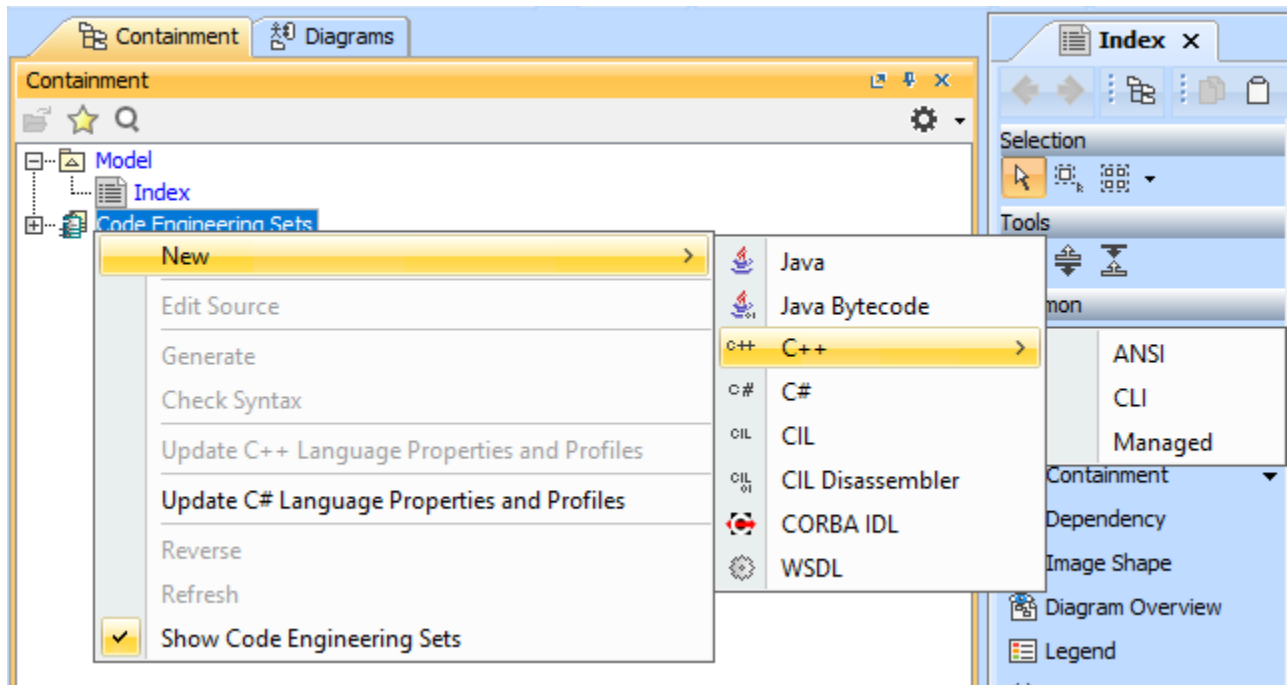
Supported dialects

C++ code engineering supports three dialects, set in our modelling tools:

- ANSI – conform to ISO/IEC 14882 specification for C++ programming language
- CLI – conform to ECMA-372 C++/CLI Language Specification base on Microsoft Visual studio 2005
- Managed – conform to Managed Extensions for C++ Specification introduced in Microsoft Visual Studio 2003

Syntax

Syntax under the Managed dialect is deprecated in Microsoft Visual studio 2005.



New dialects in C++ CE

Related pages:

- [C++ Code Engineering](#)
 - [C++ ANSI Profile](#)
 - [C++ Mapping to UML](#)
 - [Conversion from an Earlier Project Version](#)
 - [DSL Customization](#)
 - [ANSI Profile Constraints](#)
 - [Project Constraints](#)
 - [Microsoft C++ Profiles](#)
 - [Symbian macro](#)
 - [@see on documentation](#)
 - [Doxygen-after-member documentation](#)
 - [CG Properties Editor](#)
 - [Support C++ dialects](#)