

Project Status Application Wizard

The **Project Status Application Wizard** is used to apply the DLOD Milestone, DOTMLPF Milestone, or custom Milestone type to the selected element, which can be one of the following milestone kinds:

- In Service
- Deployed
- No Longer Used
- Out Of Service
- Other

To open the **Project Status Application Wizard**

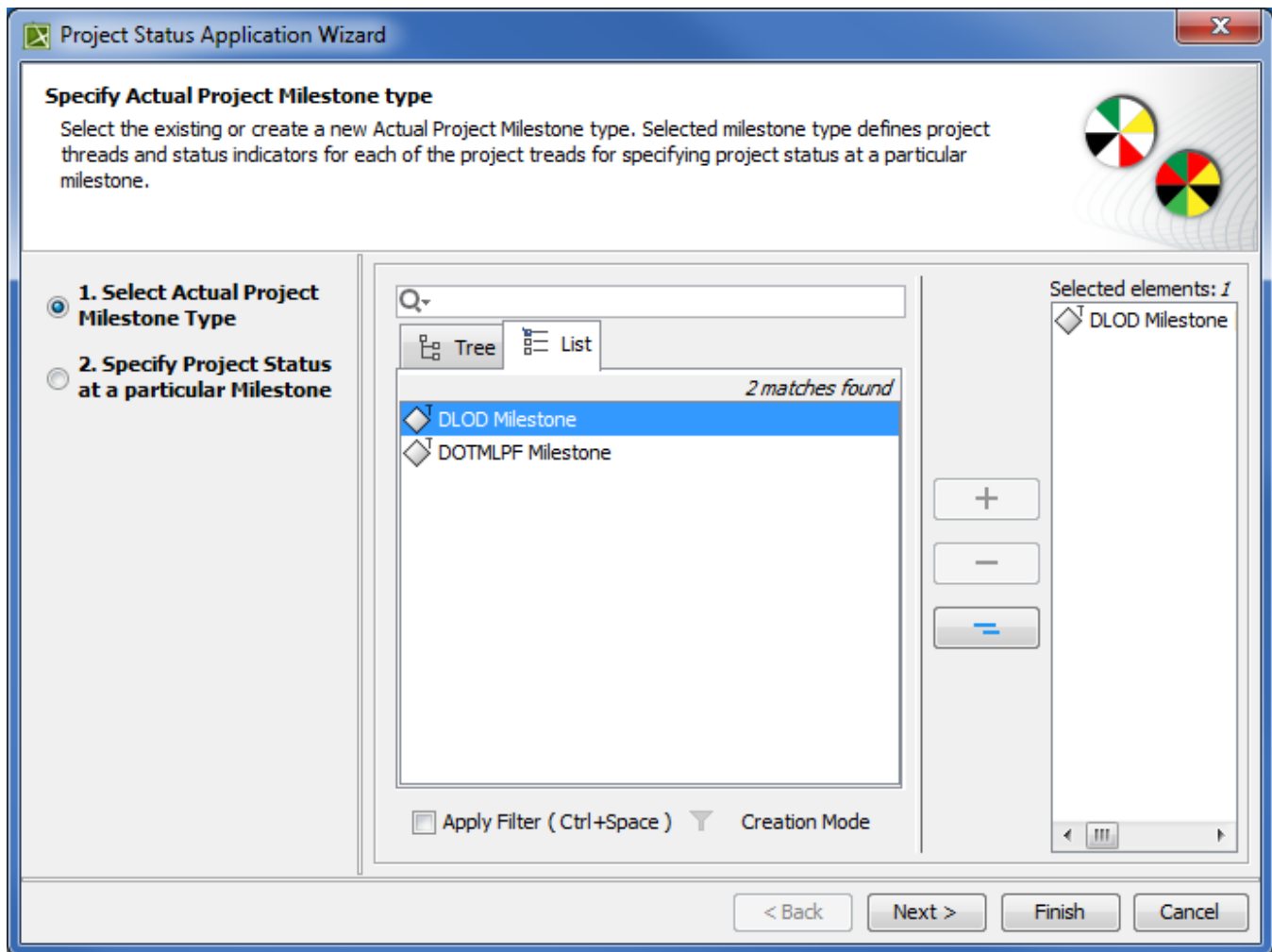
1. On the diagram pane, right-click the Milestone and select **Edit Status**.
The **Project Status Application Wizard** opens.

The wizard consists of two steps:

- 1 [Actual Project Milestone Type selection](#)
- 2 [Project Status at a particular Milestone specification](#)

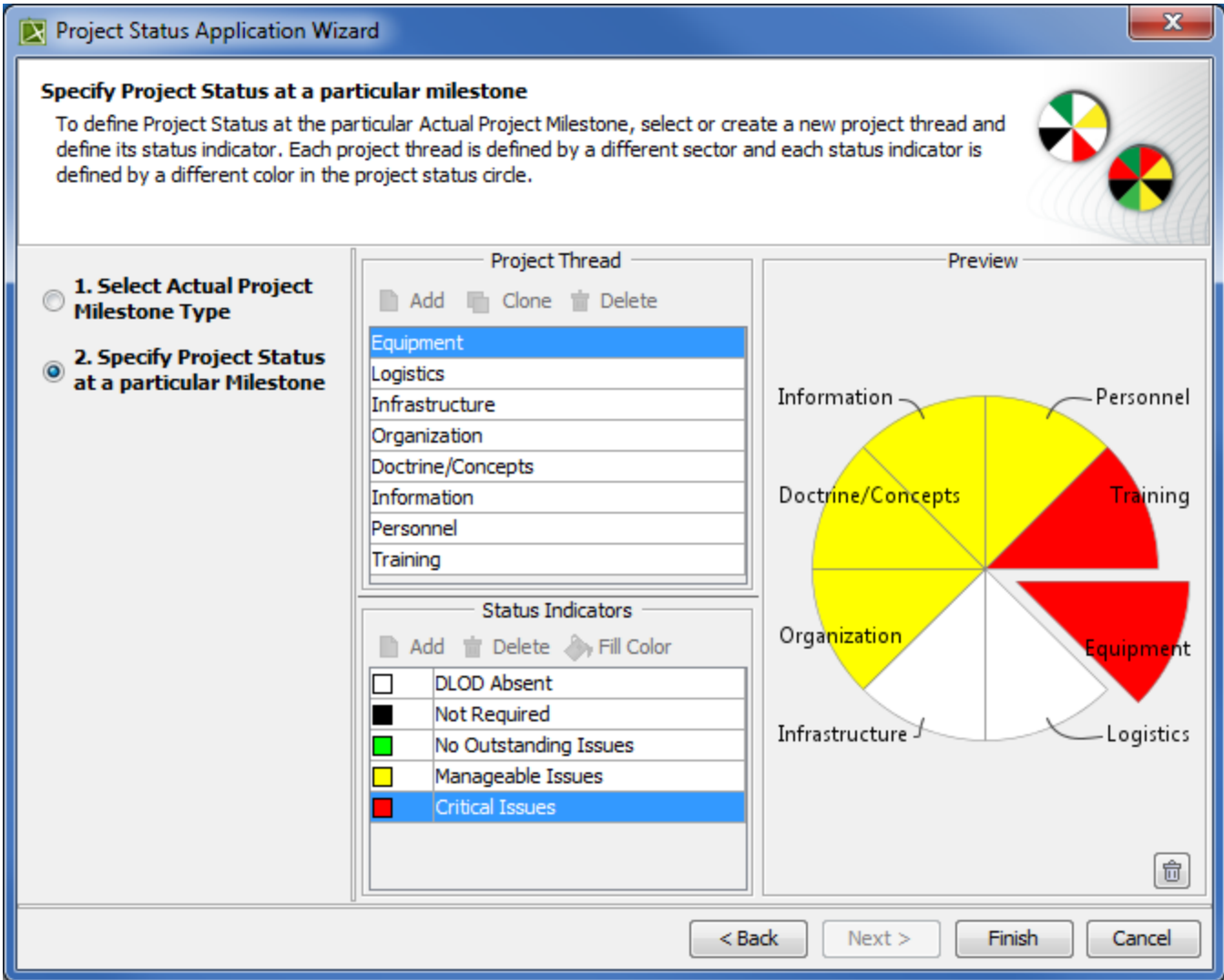
Actual Project Milestone Type selection

In this step, select DLOD Milestone, DOTMLPF Milestone, or create your own Milestone type.

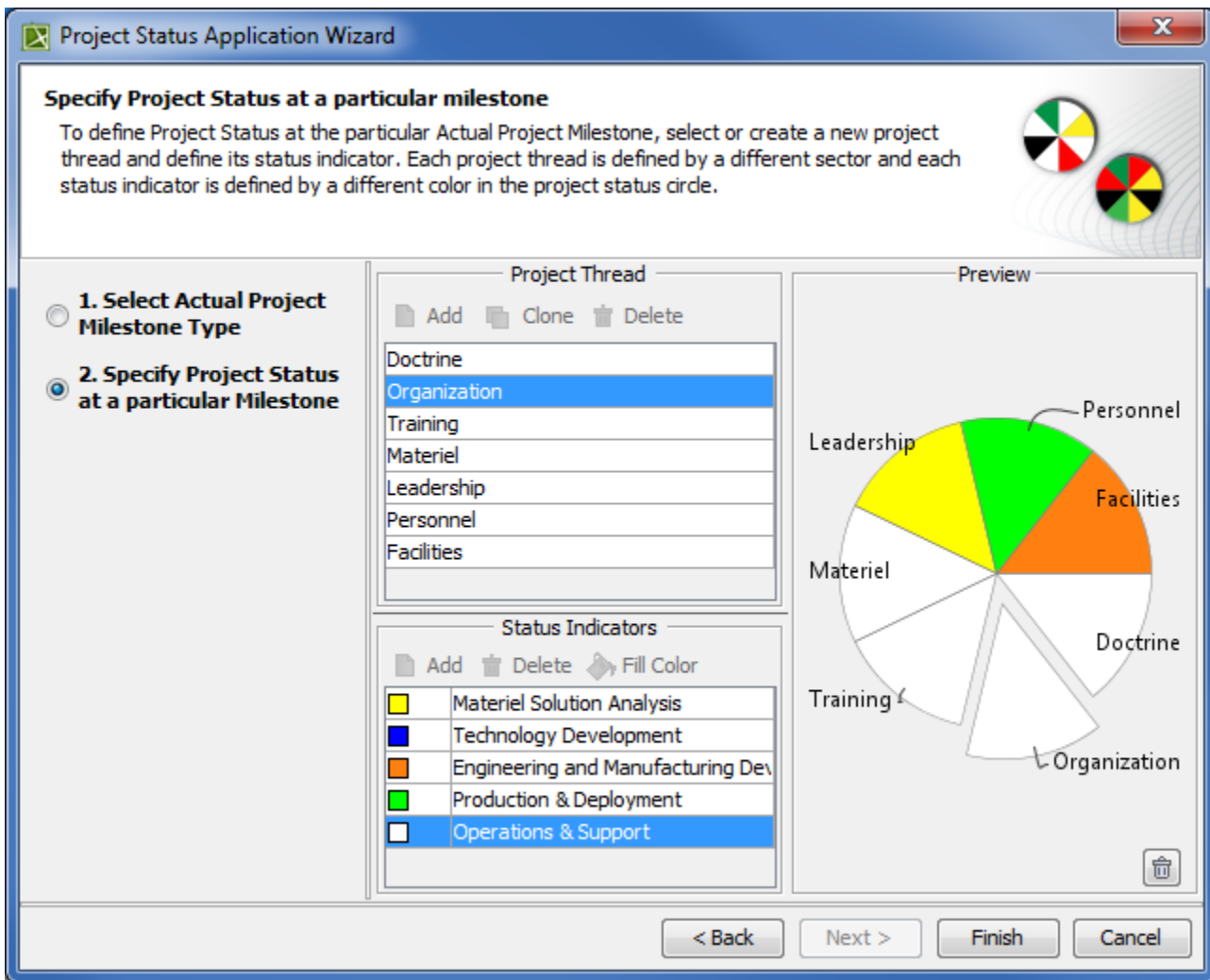


Project Status at a particular Milestone specification

In this step, specify project threads and status indicators of the selected Actual Project Milestone Type.



	Project threads	Status indicators
DLOD Milestone type	<ul style="list-style-type: none"> • Equipment • Logistics • Infrastructure • Organization • Doctrine/Concepts • Information • Personnel • Training 	<ul style="list-style-type: none"> • DLOD Absent • Not Required • No Outstanding Issues • Manageable Issues • Critical Issues



	Project threads	Status indicators
DOTMLPF Milestone type	<ul style="list-style-type: none"> • Doctrine • Organization • Training • Materiel • Leadership • Personnel • Facilities 	<ul style="list-style-type: none"> • Materiel Solution Analysis • Technology Development • Engineering and Manufacturing Development • Production & Deployment • Operations & Support

If you selected your own milestone type, you can create your own projects threads and status indicators.


To create project threads and status indicators

1. In the Project Thread area, click the **Add** button.
2. Specify the thread name.
3. In the Status Indicator area, click the **Add** button.
4. Specify the indicator name.
5. Click the **Fill Color** button.
6. In the **Color dialog** choose the color and click **OK**.



To create a second thread with the same status indicators, select a previously created thread and click the **Clone** button. A new thread with previously defined status indicators is created.

To remove the applied Project Status

-
- In the right bottom corner of the Preview area, click  .

Related procedures

- [Edit Project Status in Lr diagram](#)
- [Managing PV-2 diagram](#)
- [Removing Project Status from Lr diagram](#)