

# Generic Safety Table

## On this page

- [Creating a Generic Safety Table](#)
- [Creating elements in a Generic Safety Table](#)
- [Case study: Creating Generic Safety Table for a custom element type](#)

You can use a Generic Safety Table to display all relevant elements depending on the selected scope as shown in the following figure. An element added as a scope element should extend the ISO 26262 library (e.g., Typical Automotive Situation, Accident Scenario, Hazardous Event, Automotive Effect).

#	Name	Crash Exposure	Justification Of Crash Exposure	Vehicle Usage	Traffic And People	Location	Road Condition	Environmental Condition	Crumple Zone
1	Crash Automotive Situation								
2	Colliding to another vehicle	E4	It is an extremely dangerous situation that most likely will cause injury or death	Driving at Speed	Traffic Synchronized Flow	Highway	AnyRoadCondition	AnyEnvironmentalCondition	
3	Slipping off the road	E3	Injury could happen under most operating conditions	Steering while Turning Steering Driving Straight	AnyTrafficAndPeople	Highway	Ice Snow	Reduced Visibility	Front Crumple Zone

Filter is not applied. 3 rows are displayed in the table.

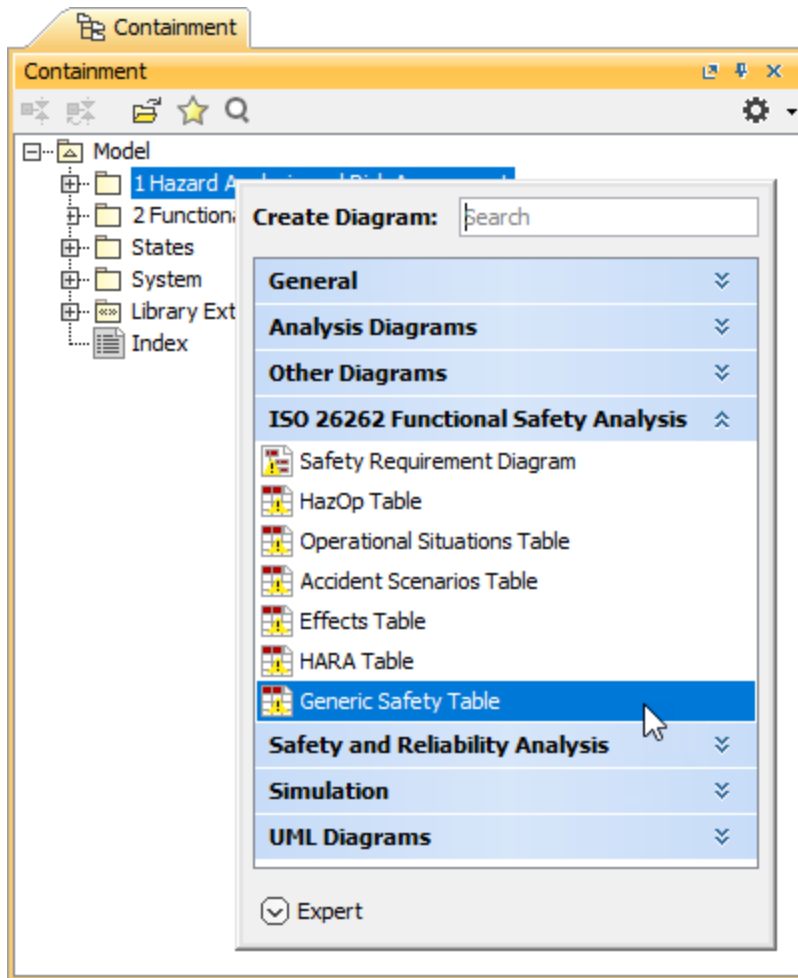
An example of a Generic Safety Table

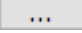
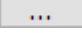

## Creating a Generic Safety Table

You can create a Generic Safety Table as described below.

### To create a Generic Safety Table

1. In the Containment tree, select the element that you want to be the owner of the table.
2. Do one of the following:
  - In the main menu, go to **Diagrams > Create Diagram**, then select **Generic Safety Table** in the open dialog.
  - In the Containment tree, right-click the owner of the table, select **Create Diagram** and select **Generic Safety Table** in the open dialog.

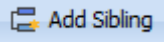
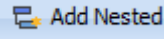


3. When the table is created, type the name of the table and press Enter.
4. Click  next to the **Element Type** box.
5. In the **Select Element Type** dialog, select the types of elements you want to display in the table, and click **OK**.
6. Click  next to the **Scope** box.
7. On the left side of the **Select Scope** dialog, select the scope element of the table, click  to add the element to the selected elements area, and click **OK**.
8. [Add the desired columns to the table](#) (by default, a Generic Safety Table has only the *Name* column).

## Creating elements in a Generic Safety Table

There are two ways to create elements for a Generic Safety Table: you can do it right in the table or in the Containment tree. If you create an element in the Containment tree and it falls under the scope of a Generic Safety Table, the element is automatically added to the table. If you want to create an element right in a Generic Safety Table, follow the steps below.

To create an element in a Generic Safety Table

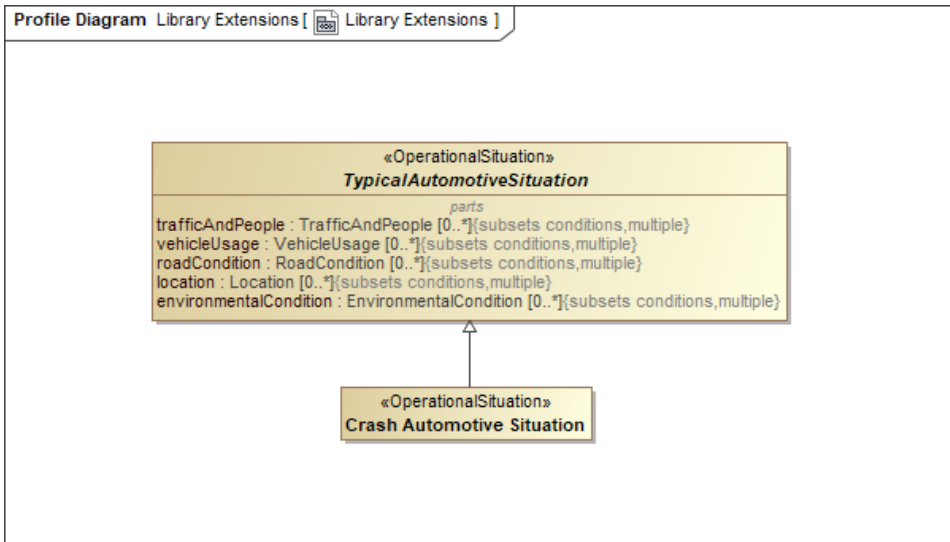
1. In a Generic Safety Table, select a table row.
2. Do one of the following:
  - In the table toolbar, click  **Add Sibling** to create an element of the same level as the one you have selected.
  - In the table toolbar, click  **Add Nested** to create an element nested under the selected element.
3. Type the name of the new element and press Enter.

## Case study: Creating Generic Safety Table for a custom element type

You can use a Generic Safety Table to display custom element types with their properties. Let's analyze the workflow of creating a custom Operational Situation and displaying it in a Generic Safety Table.

To create a custom Operational Situation and display it in a Generic Safety Table

1. In your model, create a Profile Diagram.
2. In the Profile Diagram, create a Class and name it, e.g., *Crash Automotive Situation*.
3. Apply the «OperationalSituation» stereotype to the Class.
4. In the ISO 26262 Library, find the *TypicalAutomotiveSituation* element and drag it to the Profile diagram.
5. Create a Generalization relationship from the Class created in step 2 to *TypicalAutomotiveSituation*. Your Profile Diagram should look as displayed below.



6. Save and reload the project.
7. In the Containment tree, right-click the element you want to be the owner of a Generic Safety Table, select **Create Diagram**, and select **Generic Safety Table** in the open dialog.
8. When the table is created, type the name of the table, e.g., *Crash Operational Situations*, and press Enter.
9. Click  next to the **Element Type** box.
10. In the **Select Element Type** dialog, select **OperationalSituation**, and click **OK**.
11. Click  next to the **Scope** box.
12. On the left side of the **Select Scope** dialog, select the scope element of the table, e.g., *Crash Automotive Situation*, click  to add the element to the selected elements area, and click **OK**.
13. In the Generic Safety Table, create new elements of the custom element type defined as the table scope, e.g., *Crash Automotive Situation*.
14. [Add the desired columns to the table](#) (by default, a Generic Safety Table has only the *Name* column).

After following the above steps and defining the properties displayed in your Generic Safety Table, it should look similar to the example below.

Crash Operational Situat... x

Criteria

Element Type: OperationalSituation Scope (optional): Crash Automotive Situation Filter: ▾

#	Name	Exposure	Justification Of Exposure	Vehicle Usage	Traffic And People	Location	Road Condition	Environmental Condition
1	Crash Automotive Situation							
2	Slipping off the road	E4	Injury could happen under most operating conditions	Steering Driving Straight Steering while Turning	AnyTrafficAndPeople	Highway	Ice Snow	Reduced Visibility
3	Colliding to another vehicle	E4	It is an extremely dangerous situation that will most likely cause injury or death	Driving at Speed	Traffic Synchronized Flow	Highway	AnyRoadCondition	AnyEnvironmental Condition

Filter is not applied. 3 rows are displayed in the table.

An example of a Generic Safety Table created for a custom Operational Situation.